

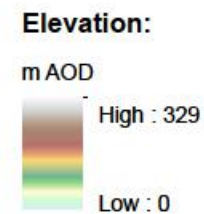
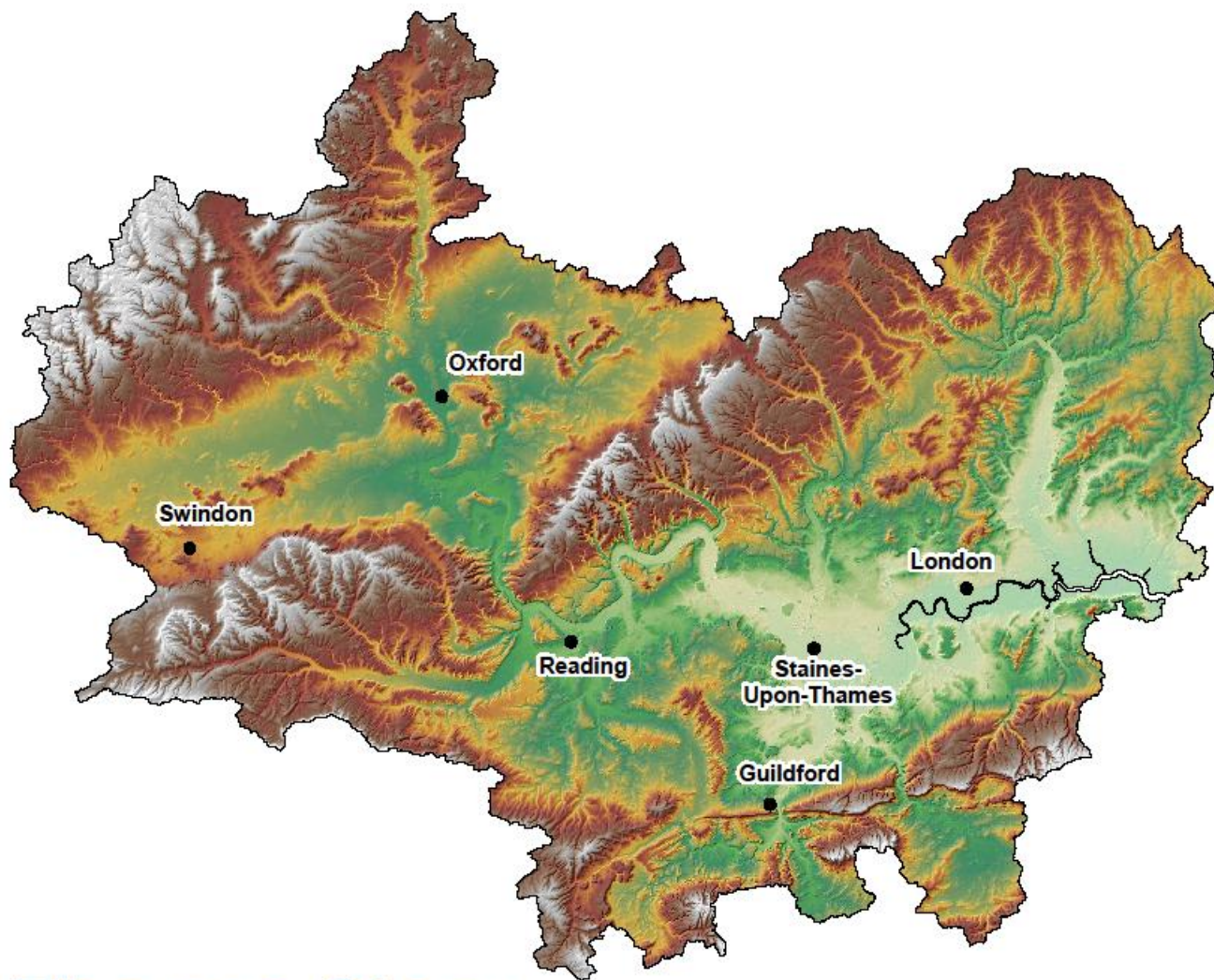
Flooding in the Thames catchment

Lewis Purbrick C.WEM, MCIWEM

Senior Flood Risk Advisor

What will I cover?

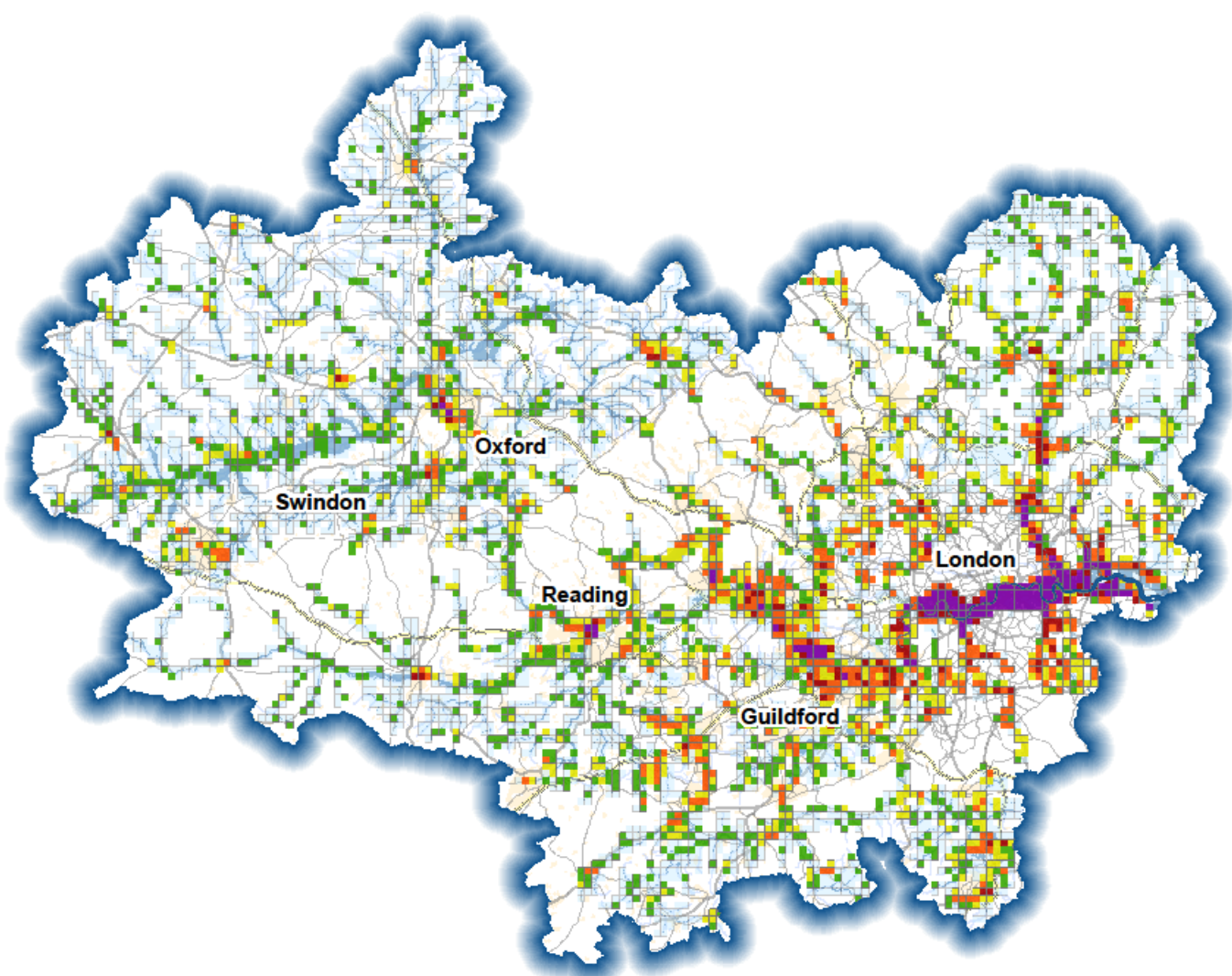
- Characteristics of flood risk in Thames catchment
- Factors affecting future flood risk
- Where to go for more information



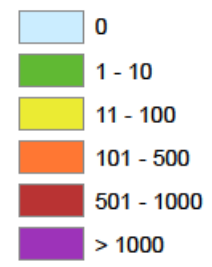
Thames Story

Topography





Number of properties at risk within Floodzone 2: (risk per km²)



Thames Story

Properties at Risk





Thames Story

Flooding

Properties protected in Thames since 1970.



Type of Defence:

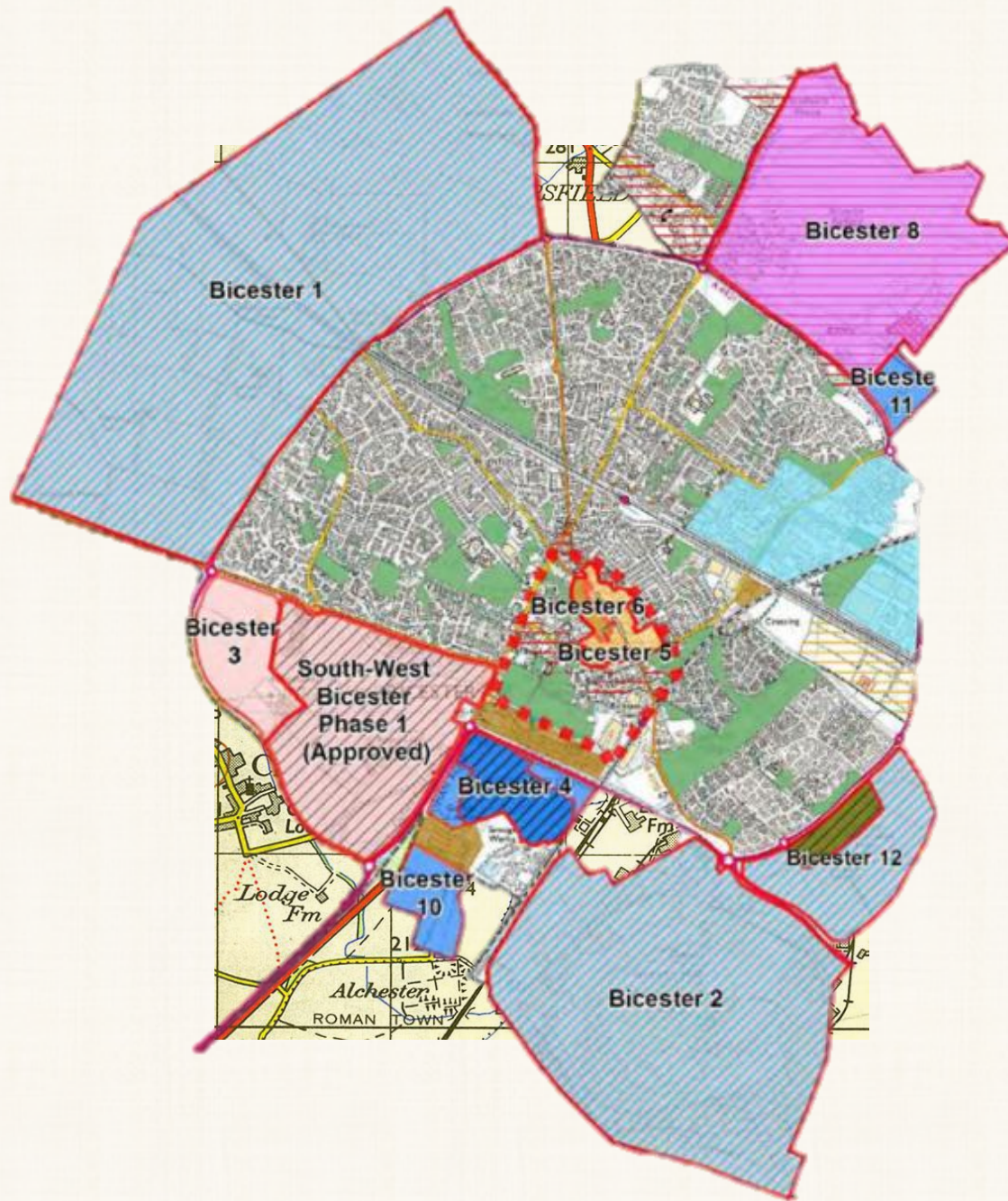
- Channel Works
- ◇ Flood Water Storage
- △ Permanent Raised Defences
- Property Level Protection
- ⊕ Temporary Defences

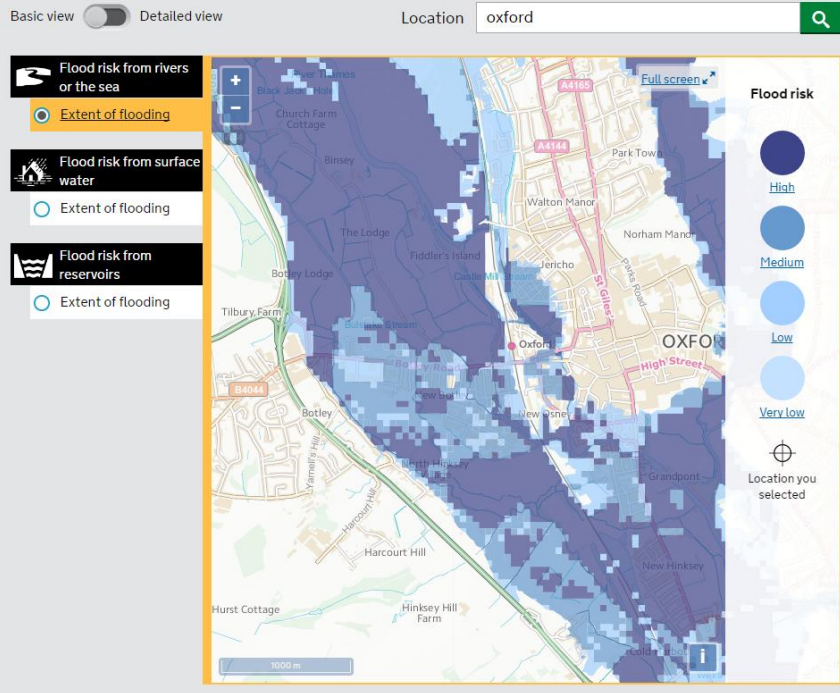
Properties Protected:

- 1 - 100
- 101 - 1000
- 1001 - 2500
- > 2500

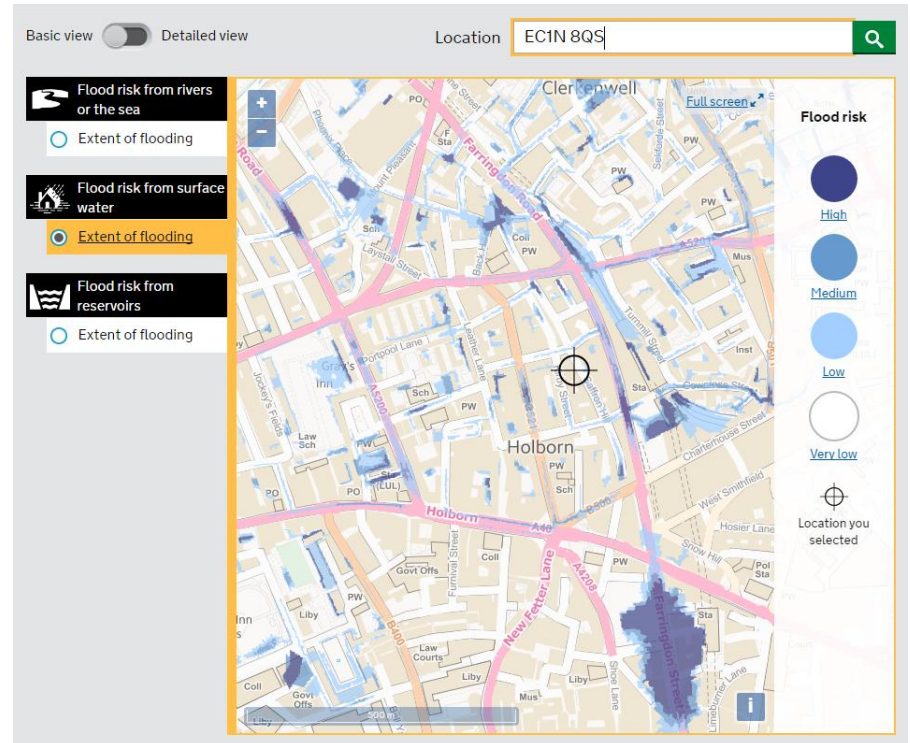
Year defence completed:

- Future Schemes
- 2015 - 2016
- 2013 - 2014
- 2011 - 2012
- 2001 - 2010
- 1991 - 2000
- 1981 - 1990
- 1970 - 1980





Rivers and Sea



Surface water

Table 1: Summary of responsibilities for RMAs

Risk Source	Environment Agency	Lead Local Flood Authority	District Councils	Water Company	Highways Authority	Internal Drainage Board
Main River	✓					
Sea flooding	✓					
Surface Water		✓				✓
Surface Water (on or coming from the Highway)					✓	
Sewer Flooding				✓		
Ordinary Watercourse		✓	✓			✓
Groundwater		✓				
Reservoirs	✓*	✓*	✓*	✓*	✓*	✓*
Coastal Erosion	✓		✓			
Strategic overview of all sources of flood risk (and the coast)	✓					

*Please note RMAs have different responsibilities for reservoirs such as regulation, asset management and flood incident response

What did I cover?

- Characteristics of flood risk in Thames catchment
- Factors affecting future flood risk
- Where to go for more information

