

Thames estuary and coastal waters catchment approach

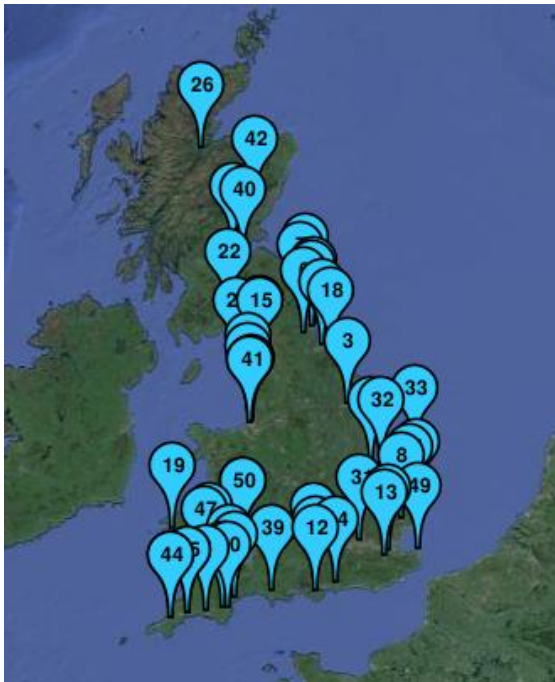


**CIWEM workshop, Integrated Catchment
Delivery Event
November 2017**

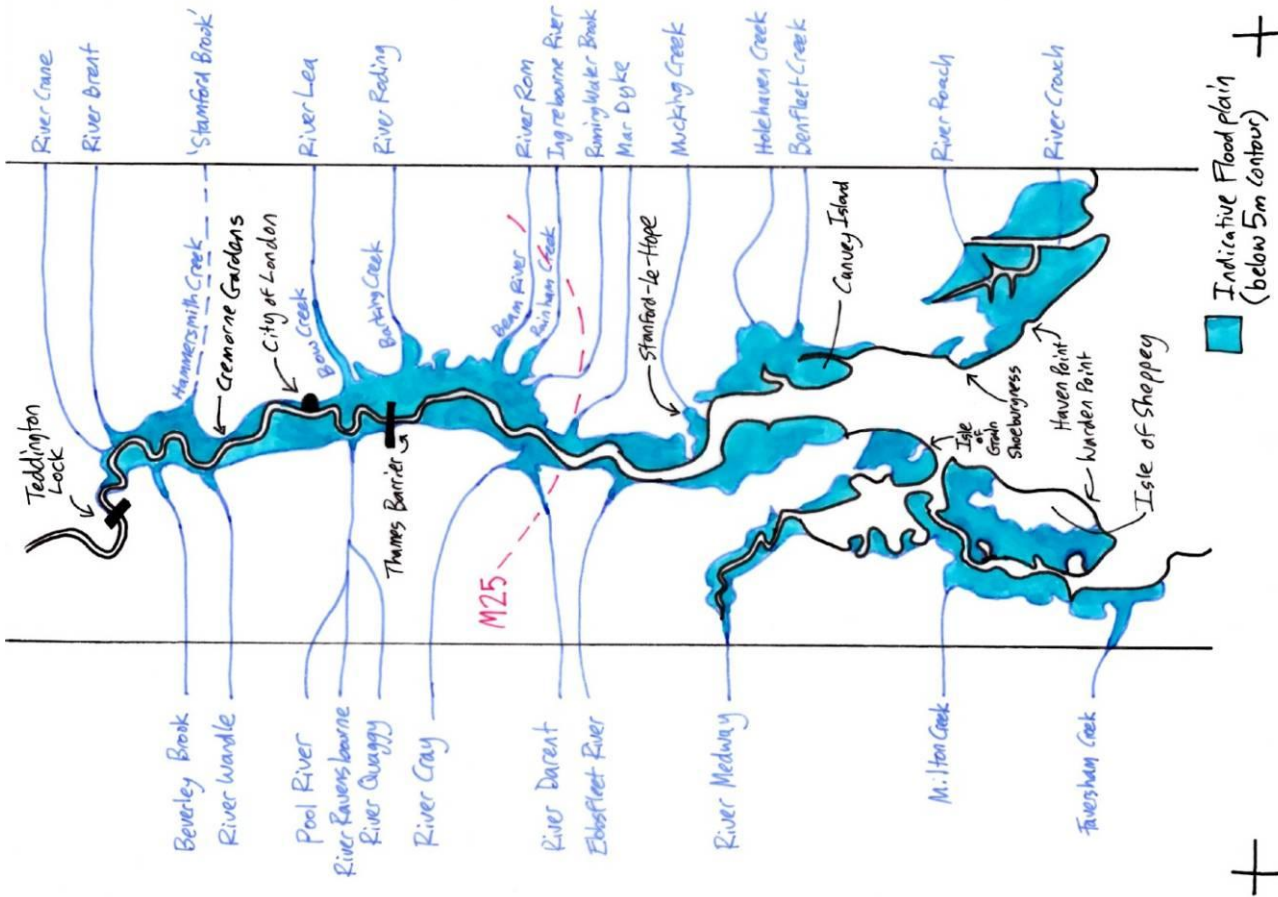




Thames Estuary Partnership, London's Coastal Partnership



The (River) Thames Estuary

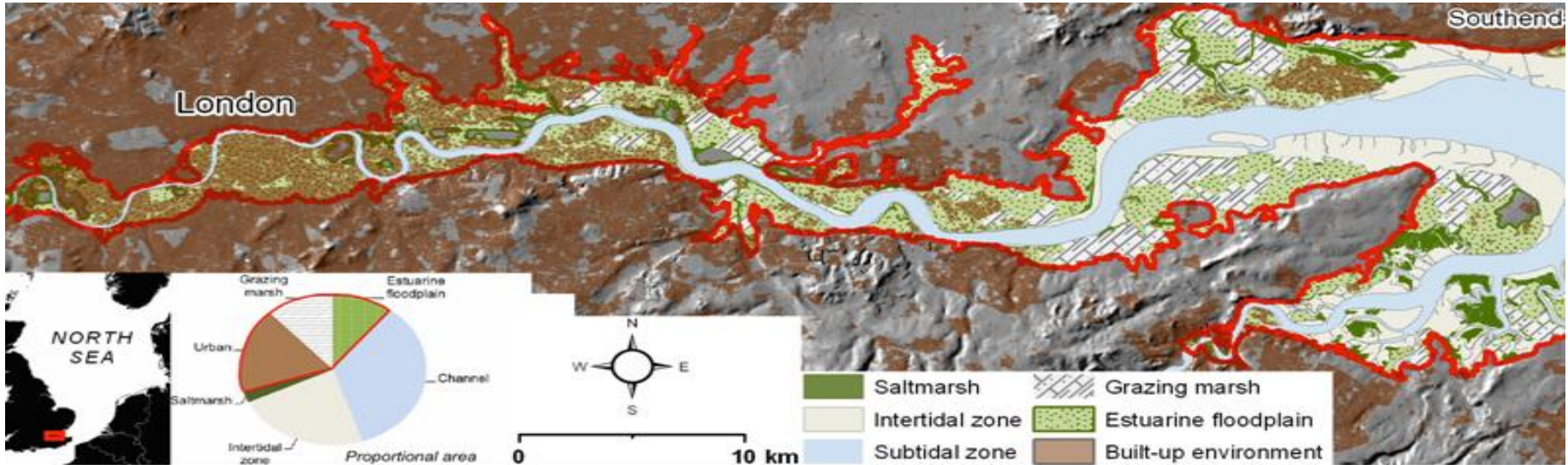


The Territory

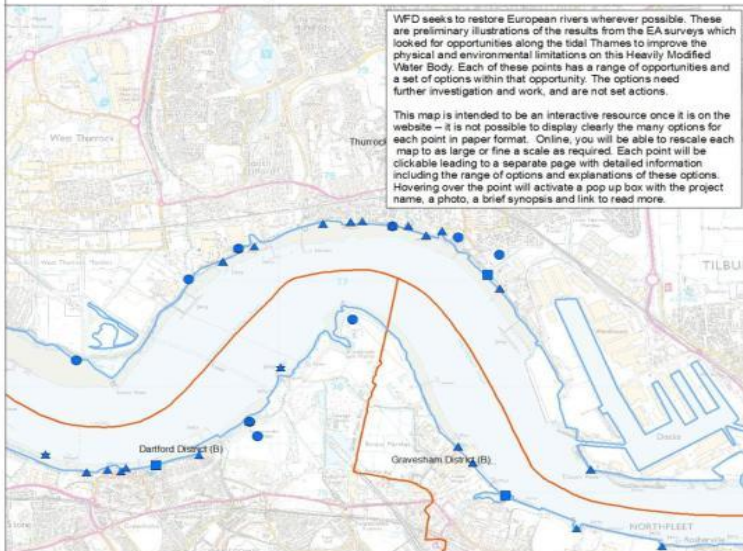
- Tideway: 160 km
- Canalised tributaries
- Flood plain (blue)
- 130 km River walls
- 9 Flood barriers
- Similar European Rivers:

- Elbe
- Weser
- Rhine
- Scheldt
- Humber

Thames Research, Data Rich



Morphology: Initial Results from EA Surveys Indicating Sites where Multiple Improvements may be Possible



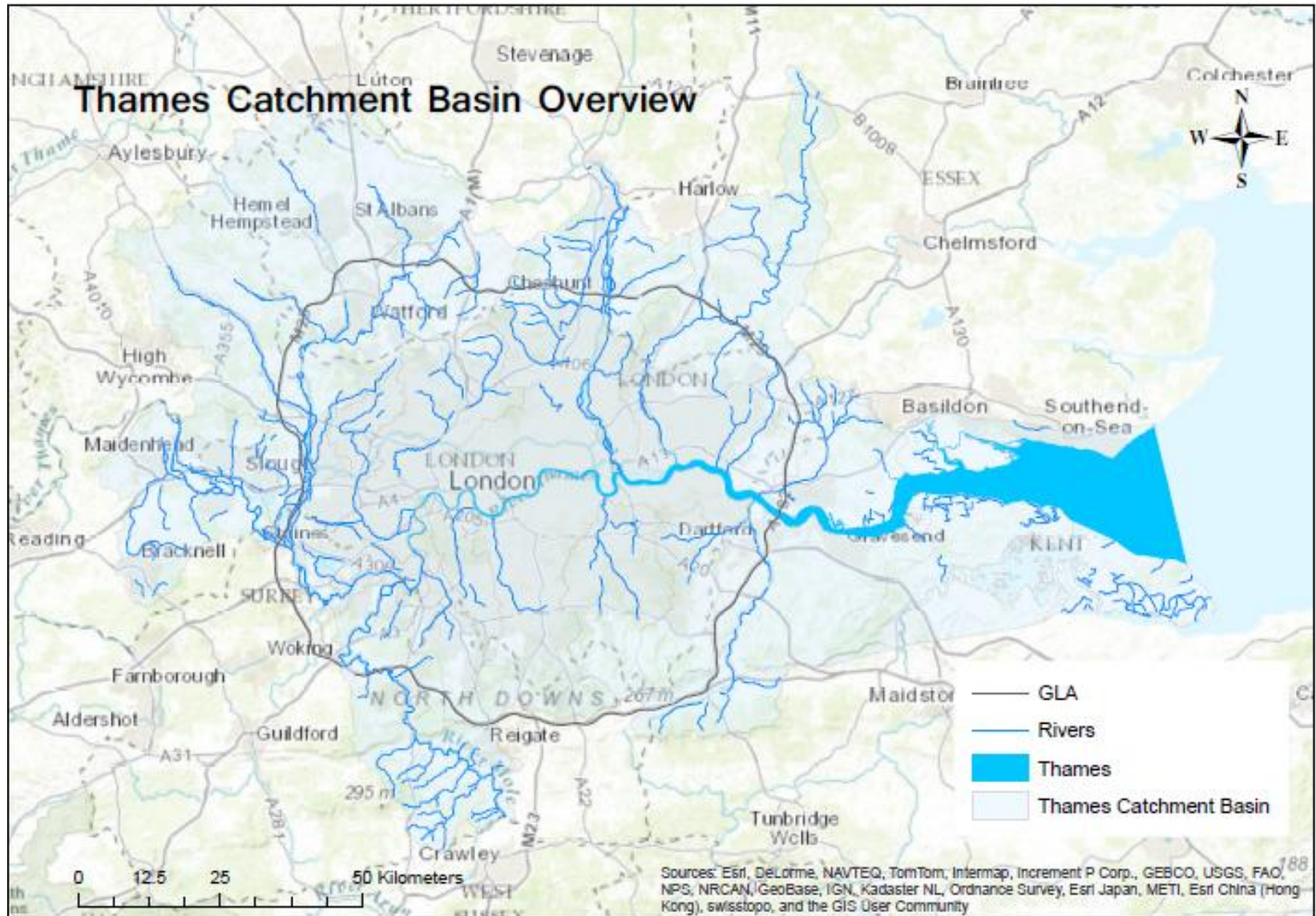
Current Natural Capital



CURRENT ASSETS

This map shows the main areas and typologies of natural infrastructure occurring in the Thames Estuary Partnership Area and their distribution across the urban and rural landscapes

The (River) Thames Estuary



EU WFD

What we are trying to achieve with others

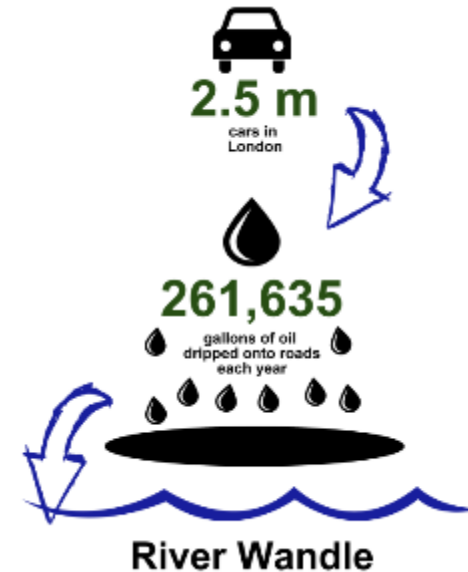
From this...

To this...



YOUR TIDAL THAMES





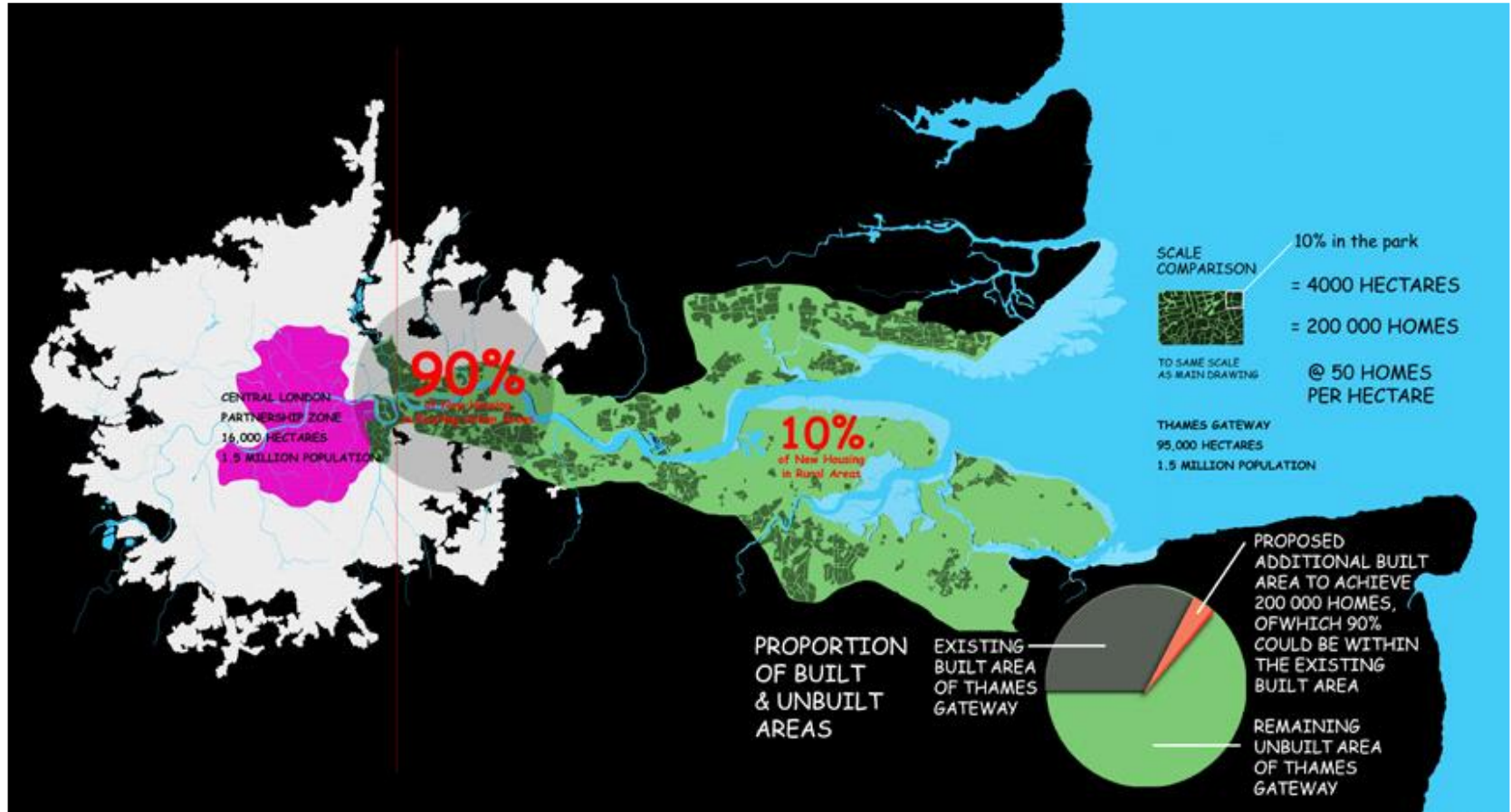
Barriers to an integrated approach?



Why do we ignore our estuaries?



Opportunities & Challenges - London moves east



The 'White Bits'



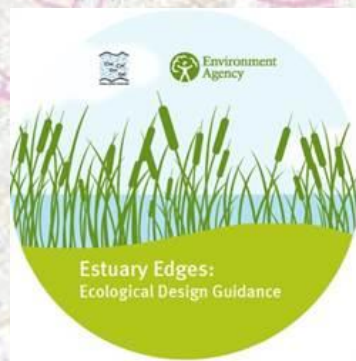
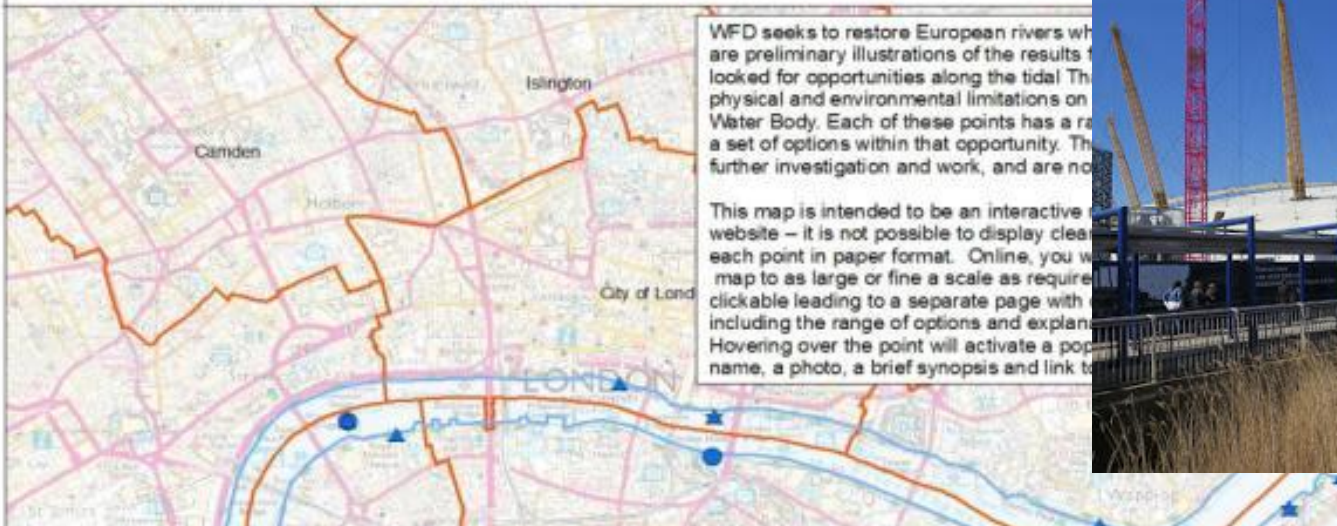


Challenges and opportunities of taking an integrated approach

- Too many messages across the estuary - WFD, FD, BWD, MSFD, NEWP, NPPF, Defra 25yr Strategy and Natural Capital
- Lack of resource in LAs and Regulatory Authorities
- Lack of resource in CaPs and CoPs
- Misunderstanding of coastal responsibilities in urban LAs
- Opportunities to align and combine messages
- Opportunities to strategically plan across flood defence, river management, MSP and SMP
- Opportunities and appetite for origin to ocean scientific research

Riverside and river wall habitat enhancement opportunities

Morphology: Initial Results from EA Surveys Indicating Sites where Multiple Improvements may be Possible



Legend

Thames Middle Category

- Habitat Restoration
- ▲ Habitat enhancement
- Modify Structure
- ★ Remove Structure
- Tidal Thames Catchment
- London Boroughs

0 0.4 0.8
Kilometres

This map is reproduced from 'Estuary Edges: Ecological Design Guidance' with the permission of the Environment Agency. It is the property of the Environment Agency. All rights reserved. No part of this publication may be reproduced, stored in a retrieval system, or transmitted, in any form or by any means, without the prior written permission of the Environment Agency. 10002030, 2005.

Estuary Edges 2017

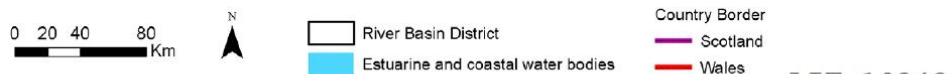
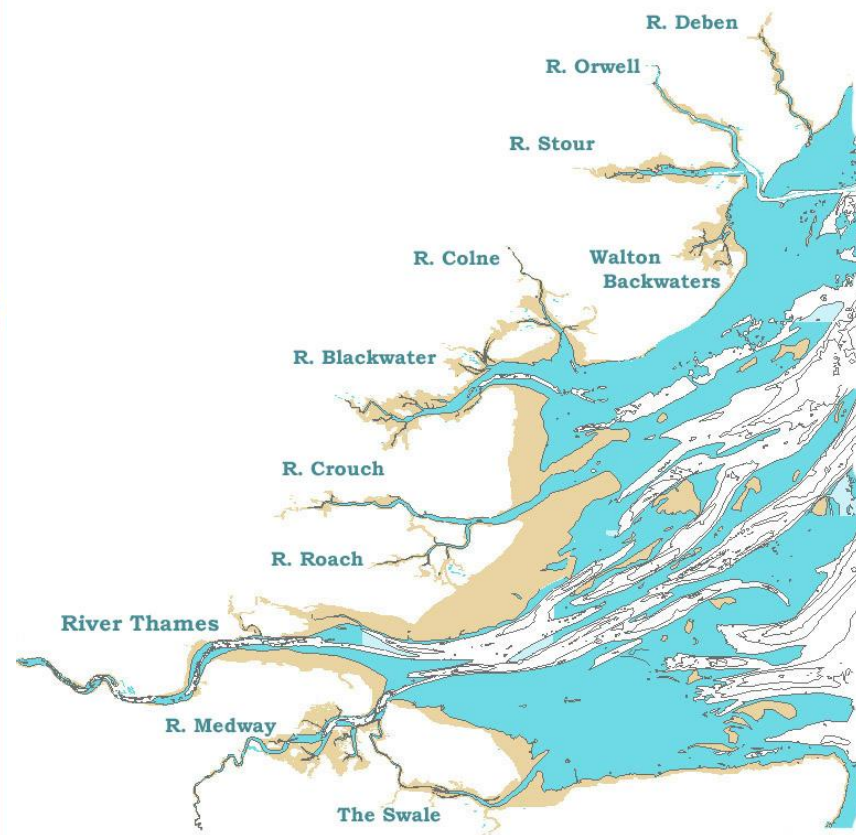


Route for a holistic approach

ROADMAP FOR FISH MIGRATION IN THE DUTCH DELTA



Greater Thames Estuary Fish Migration Road Map



LIT 10343



Collaboration and Partnership Projects



Marine CoLABoration



**NORTH
THAMES**
FISHERIES LOCAL
ACTION GROUP



London-on-Sea!

London is a coastal city linked to the Ocean through the River Thames



Marine Spatial Planning comes to London

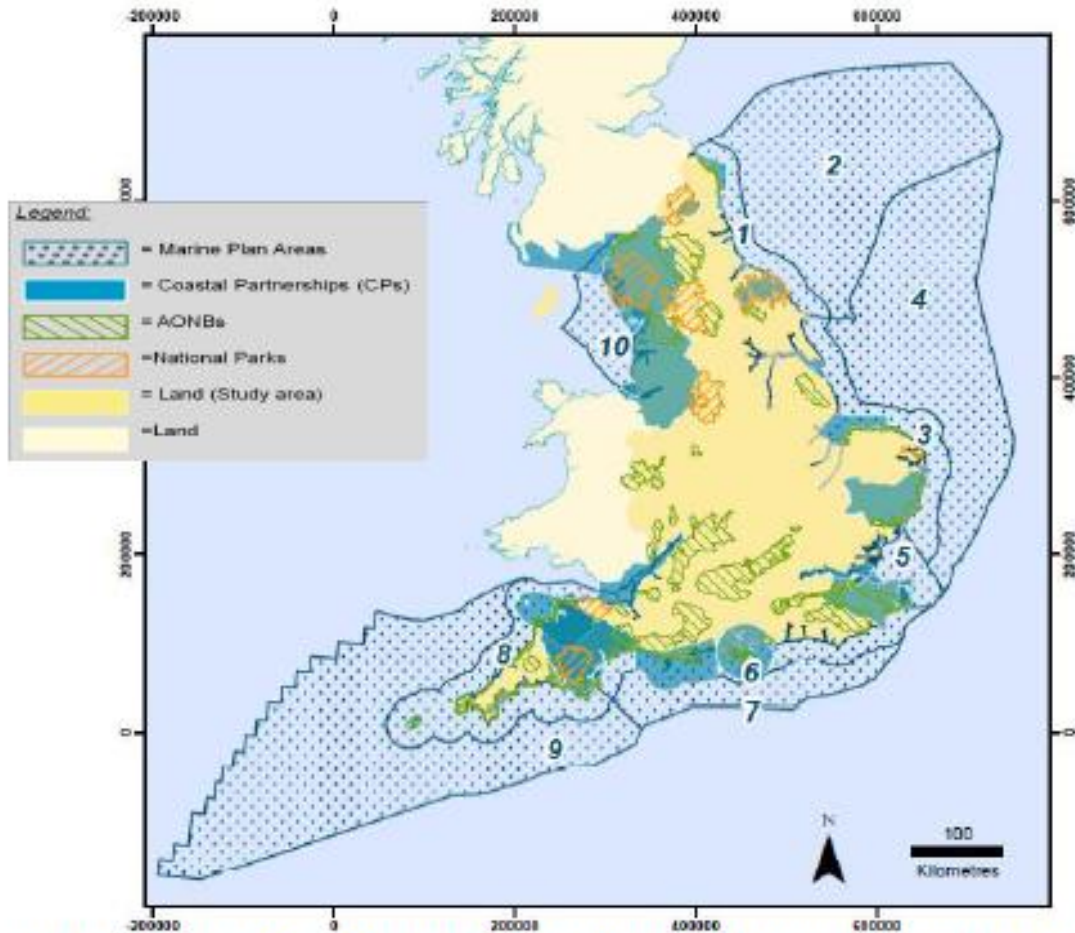


Figure 2: Country wide spatial distribution of participating Coastal Partnerships in England.
 Source: © Natural England copyright. Contains Ordnance Survey data © Crown copyright and database right [2012]. Other data from CPN members contains Ordnance Survey data © Crown copyright and database right [2012].





a.pryor@ucl.ac.uk

www.thamesestuarypartnership.org

www.coastalpartnershipsnetwork.org.uk

