



Jenny Phelps

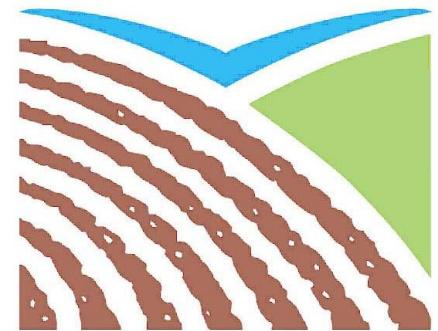
FW SW Associate

Gloucestershire FWAG

Water with Integrated Local Delivery

(WILD) Project

Cotswold Catchment



FWAG
SouthWest



COTSWOLD DISTRICT COUNCIL



Gloucestershire

FWAG SouthWest



A clear solution for farmers

CATCHMENT SENSITIVE FARMING



Environment Agency



The catchment based approach



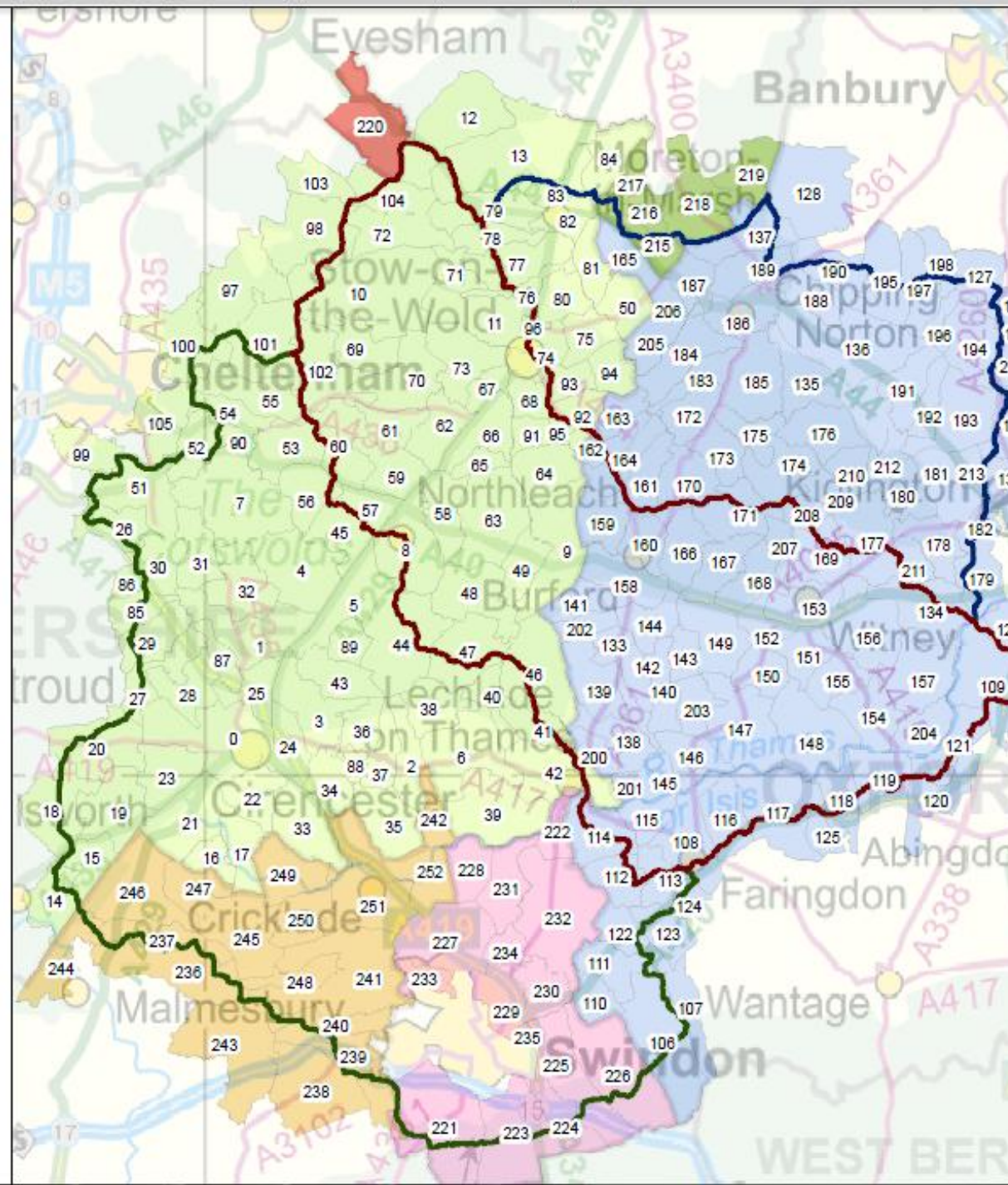
Cotswold Catchment – *Upper Thames*, Windrush And Evenlode

84 Catchments

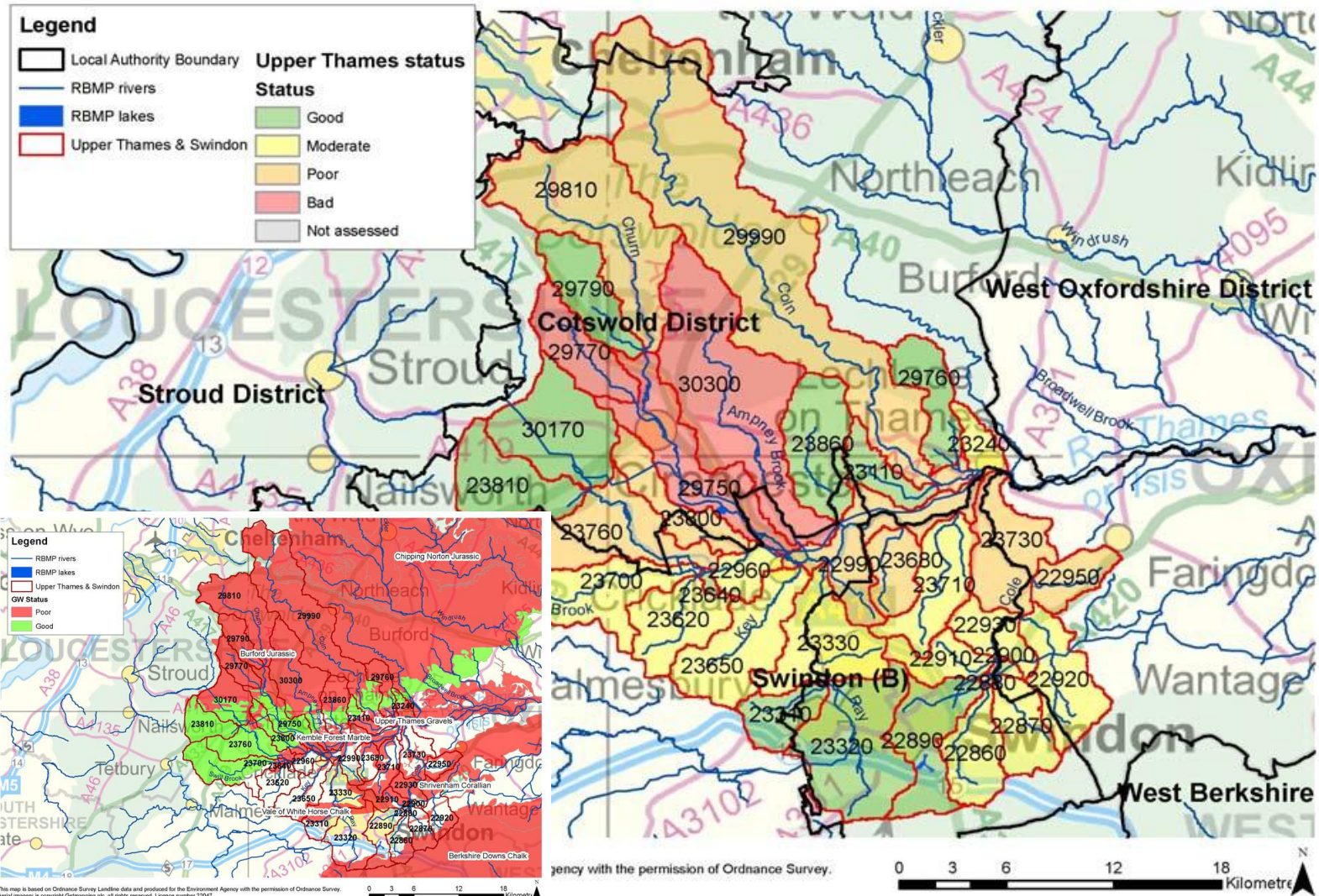


*Cotswolds
Catchment –
Upper Thames
Partnership*

*Integrated
catchment
management*



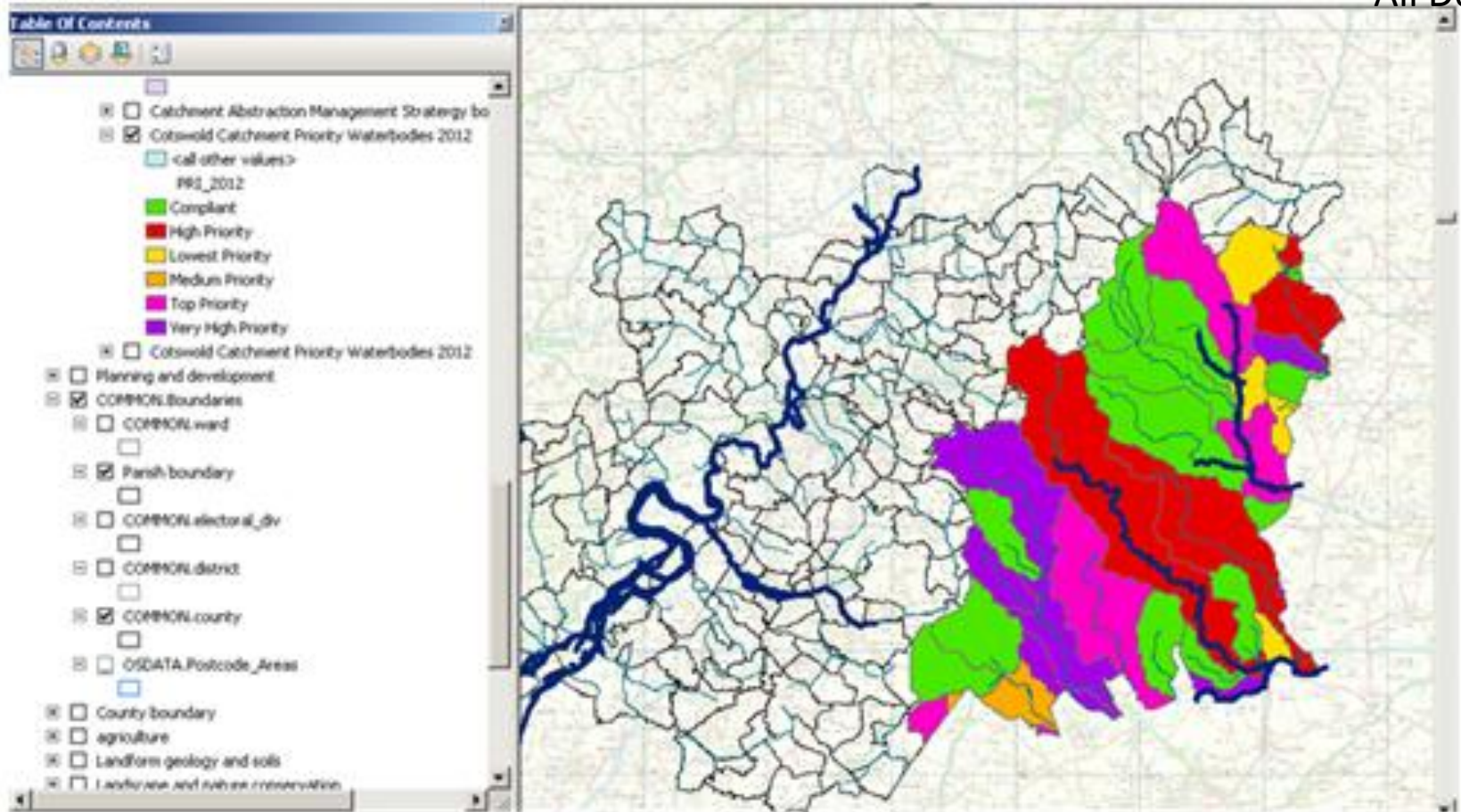
The Upper Thames Implementation Plan



This map is based on Ordnance Survey Landline data and produced for the Environment Agency with the permission of Ordnance Survey. Aerial imagery is copyright Getmapping plc, all rights reserved. Licence number 22047.

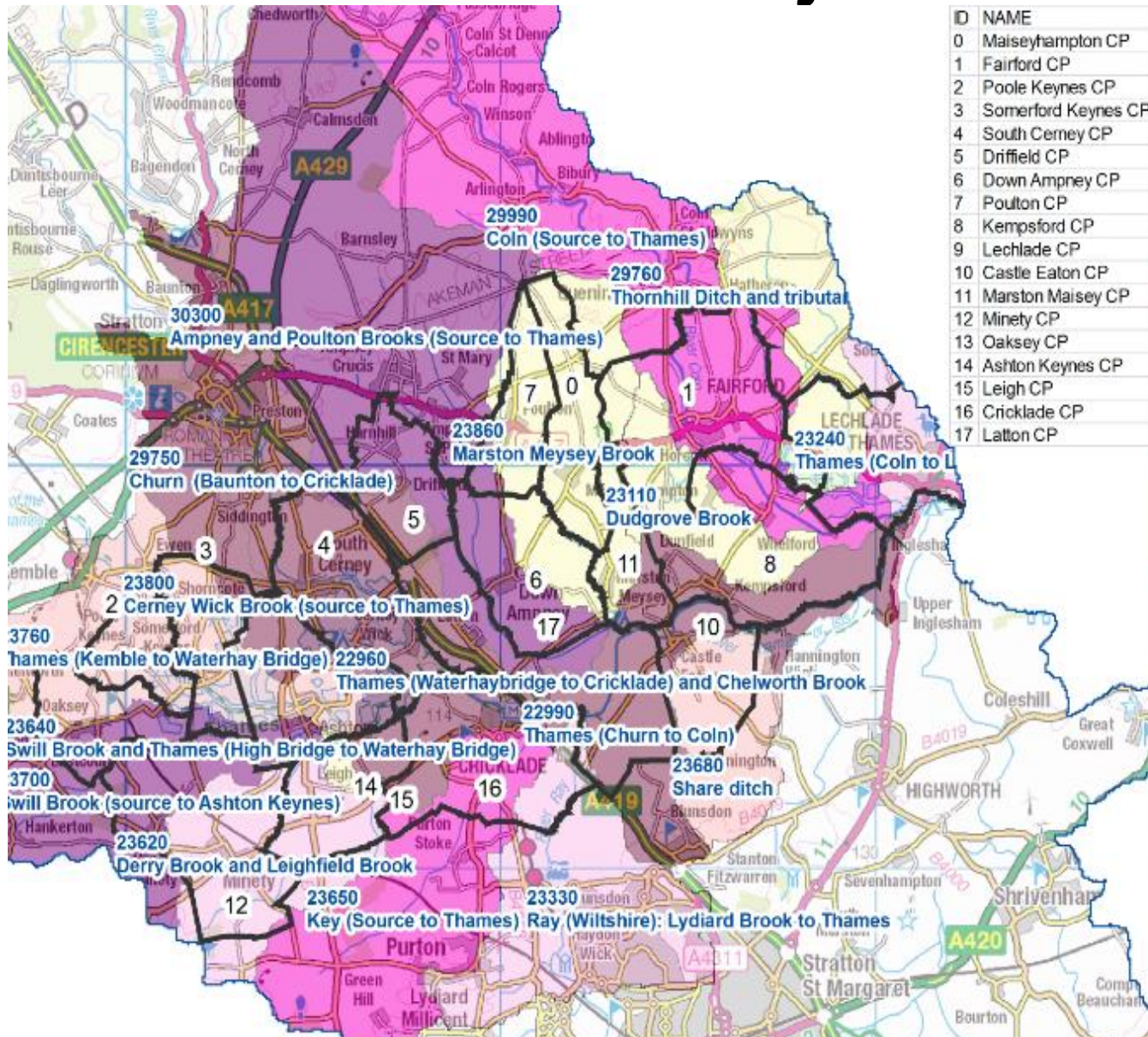
Developing Integrated approach that over layers all strategies , linking with parish planning to understand all locally relevant opportunities

All Depts.



84 layers so far – locally relevant contacts
GIS system hosted by CCRI/County Council

WILD Project area



| ID | NAME |
|----|---------------------|
| 0 | Maiseyhampton CP |
| 1 | Fairford CP |
| 2 | Poole Keynes CP |
| 3 | Somerford Keynes CP |
| 4 | South Cerney CP |
| 5 | Driffield CP |
| 6 | Down Ampney CP |
| 7 | Poulton CP |
| 8 | Kempsford CP |
| 9 | Lechlade CP |
| 10 | Castle Eaton CP |
| 11 | Marston Maisey CP |
| 12 | Miney CP |
| 13 | Oaksey CP |
| 14 | Ashton Keynes CP |
| 15 | Leigh CP |
| 16 | Cricklade CP |
| 17 | Latton CP |

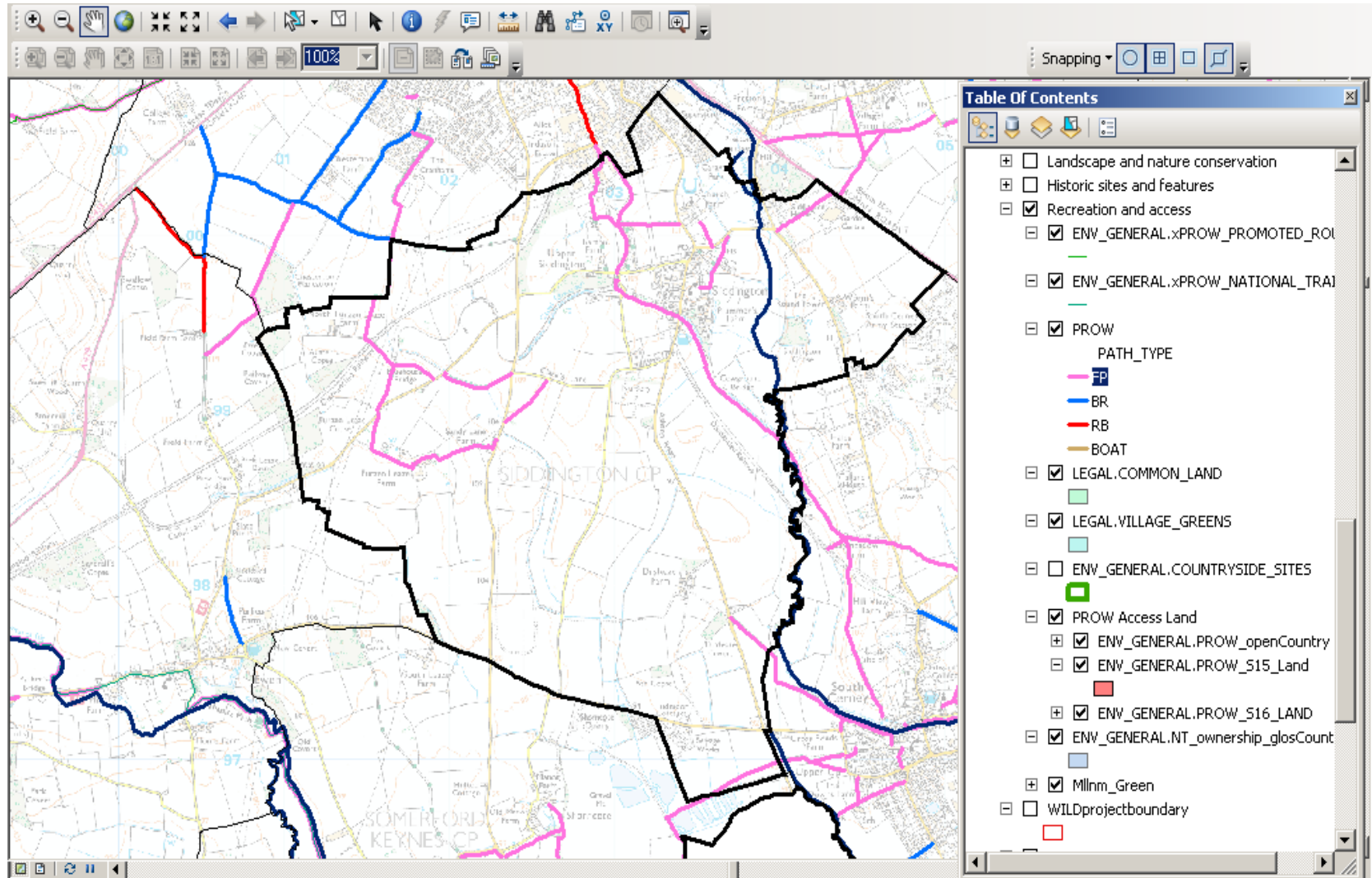
Parishes and waterbody priority status in the Cotswold WILD Project area

| | |
|---------------------------|--|
| Top priority | Those water bodies where we have a commitment to deliver by 2015 |
| Very high priority | Those water bodies we are confident have an ecological failure, we understand the reasons why and they have bad or poor biological status |
| High priority | Those water bodies we are confident have an ecological failure, we understand the reasons why and they have a moderate or better biological status |
| Medium priority | Those water bodies we still need to confirm the ecological failure or understand the reasons for the failure, and they have bad or poor biological status |
| Lowest priority | Those water bodies we still need to confirm the ecological failure or understand the reasons for the failure, and they have moderate or better biological status |
| Compliant | Already at GES |



© Crown copyright and database rights 2012
 Ordnance Survey 100024198
 Aerial imagery is copyright Getmapping plc, all rights reserved. Licence number 22047.
 © Environment Agency copyright and/or

GIS system indentifies and integrate *all* environmental delivery opportunities



Locally relevant contacts from all organisations

Joined up partnership working at a local level

8 key themes to the approach:

Works at lowest appropriate administrative structure;
Clarifies statutory and non-statutory partners;
Delivers objectives at landscape scale;
Supports and values the farming community;
Facilitation to develop local/ management group;
Incorporates the Parish or Ward Council - GRCC;
Enables inclusive multi objective delivery;
Identifies funding opportunities, resources and match
funding.

Identifying projects of multiple benefits

Linked to parish planning that could be funded from
multiple sources

WFD rivers and other designations within Siddington Civil Parish

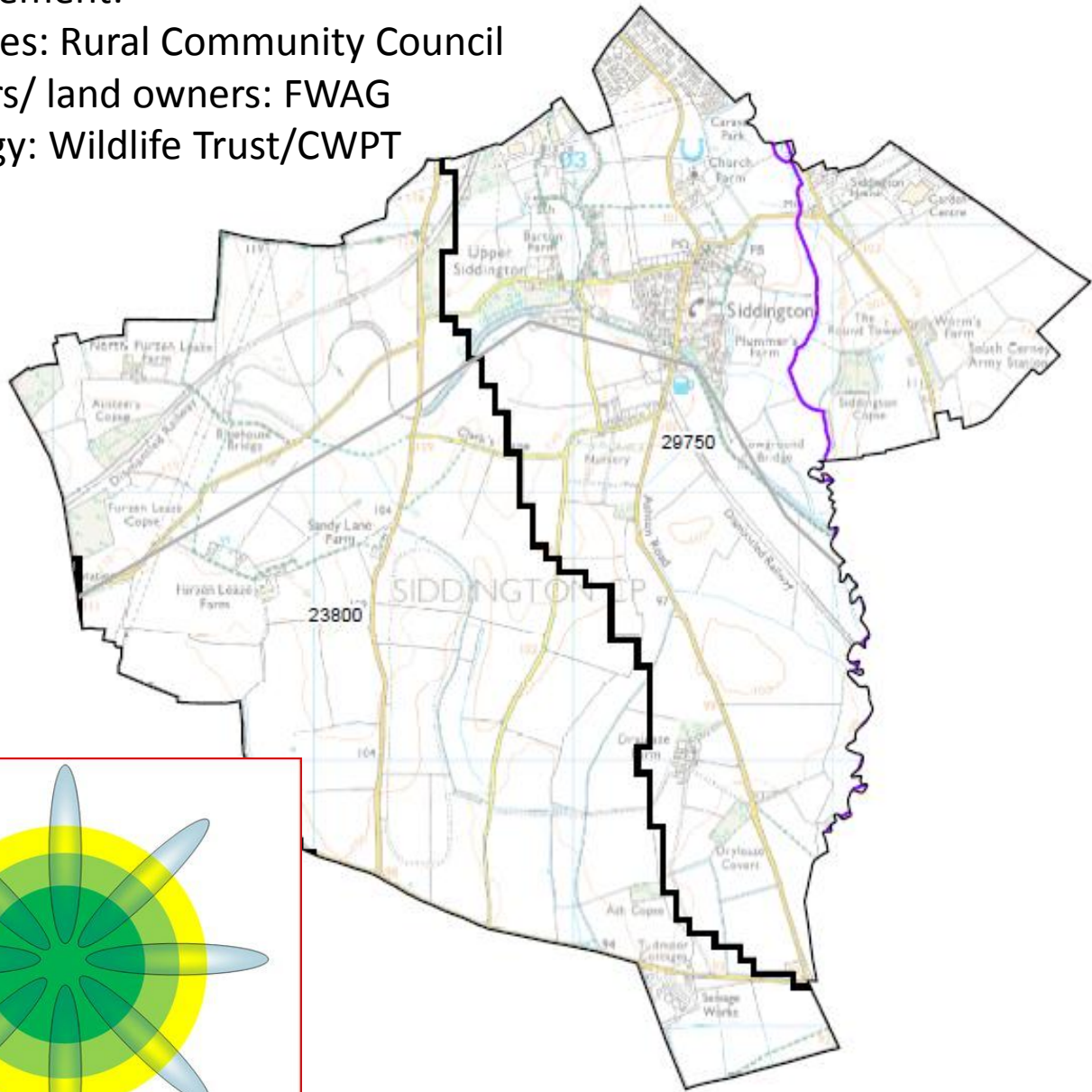


Engagement:

Parishes: Rural Community Council

Famers/ land owners: FWAG

Ecology: Wildlife Trust/CWPT



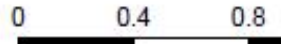
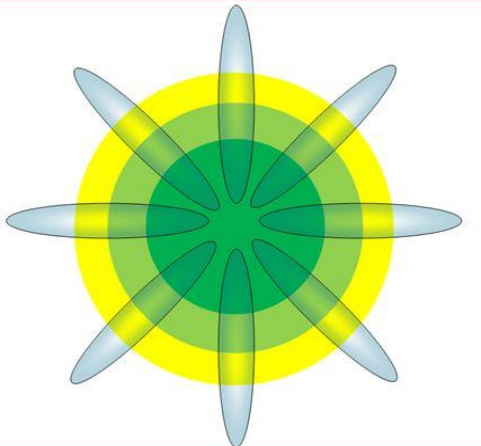
Legend

WFD Rivers

Driving Element

- Canal (Not applicable)
- Dissolved Oxygen
- Hydrology, Morphology
- Fish
- Invertebrates
- Invertebrates, Fish
- Phosphate, Ammonia, Invertebrates
- Phosphate, Phytoplankton
- Phytoplankton

WFD Waterbody Boundary



© Crown copyright and database right
Ordnance Survey 100024198
Aerial imagery is copyright Getmapping
all rights reserved. Licence number 2
© Environment Agency copyright and
database rights 2011. All rights reserved



THE RIVER CHURN
RUNS
NORTH TO SOUTH EAST
YELLOW

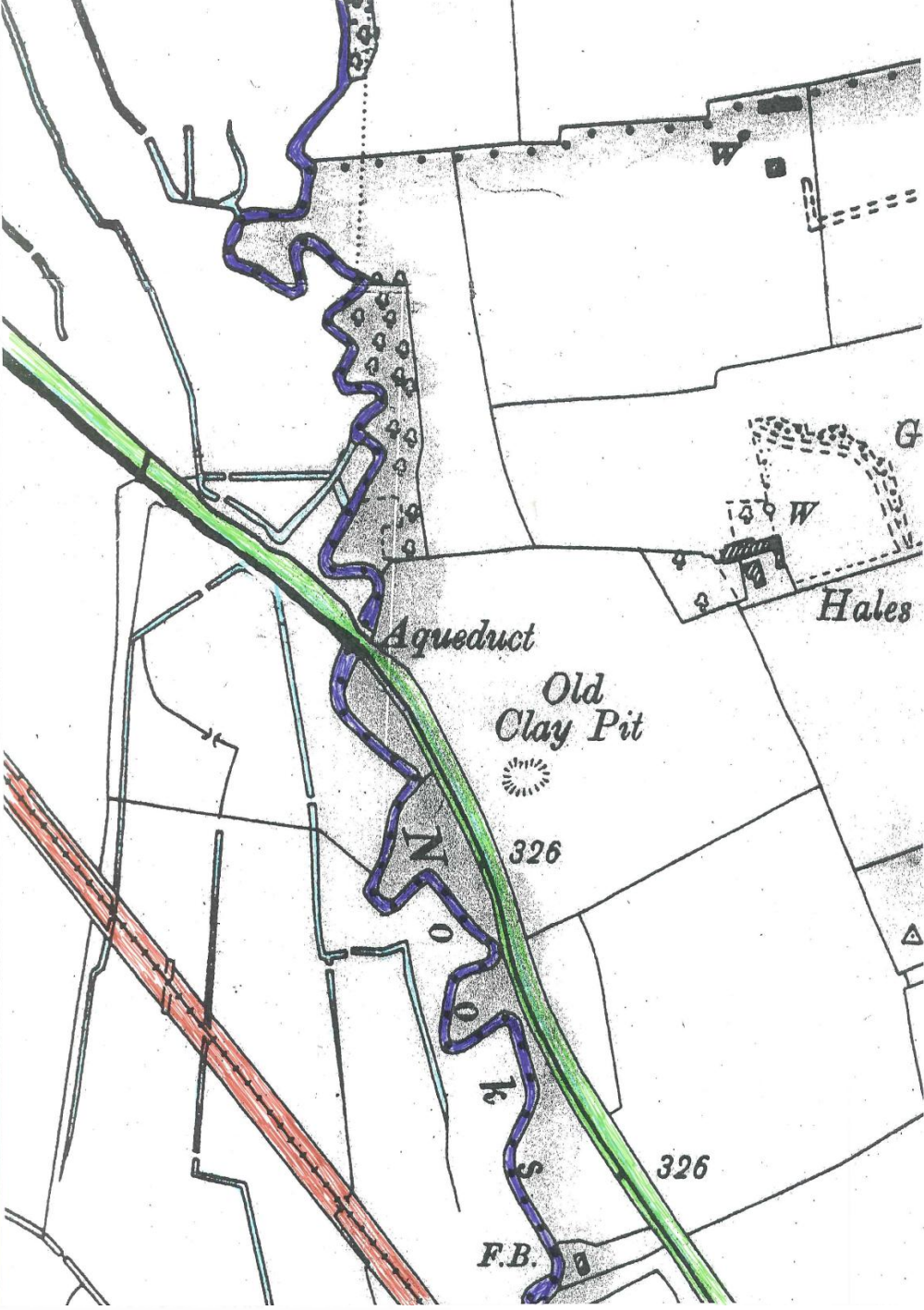
CERNEY WICK BROOK
RUNS
NORTH TO SOUTH EAST
ORANGE

THE RIVER THAMES
RUNS
WEST TO SOUTH
BLUE

THAMES AND SEVERN
CANAL DISUSED
PINK

LAND DESIGNATED FOR
GRAVEL EXTRACTION
BLACK

WATER COURSES
IN THE PARISH
AND
SURROUNDING AREA

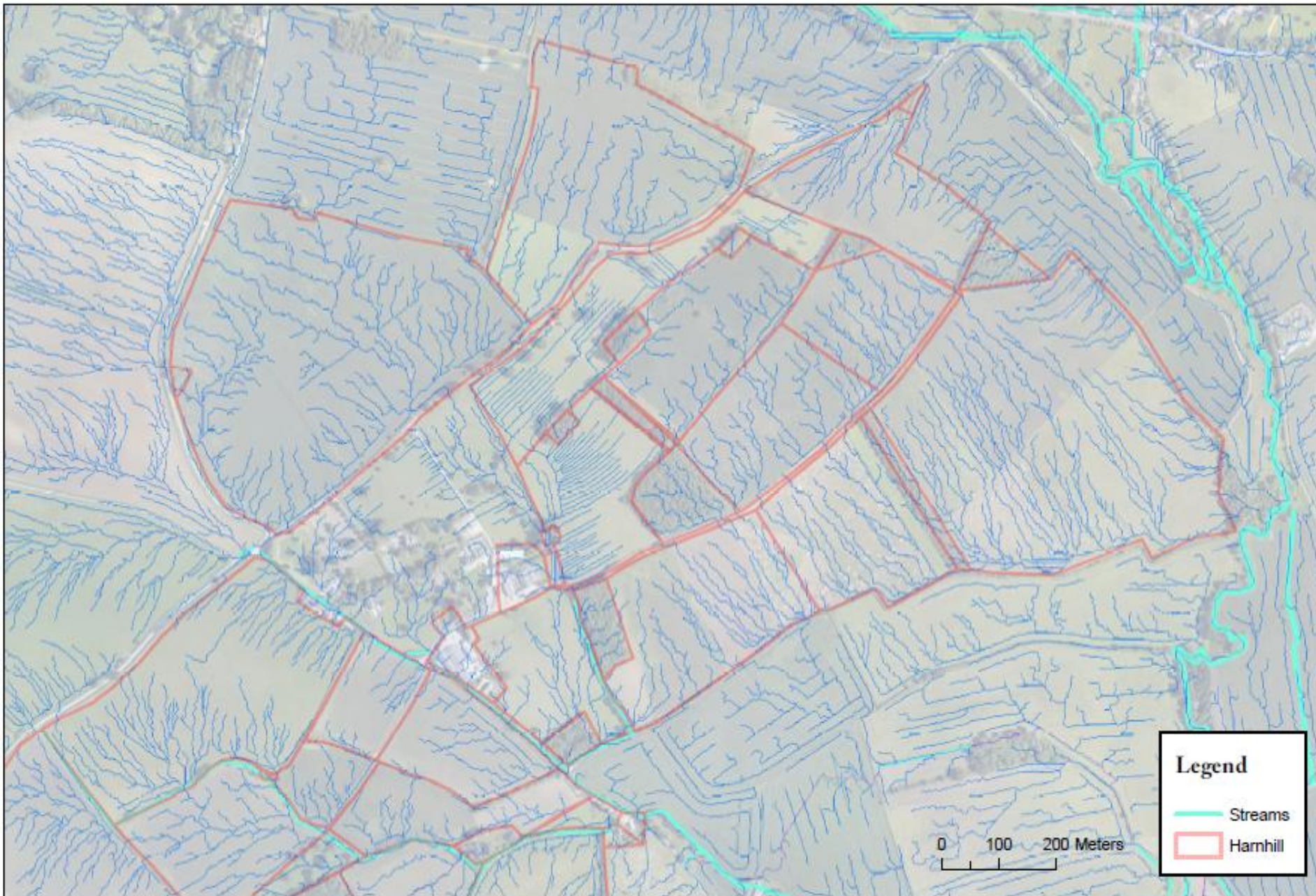


X Y coordinates for each parish

| | Number | Issue | Impact | Action required | Interested parties |
|----|--------|---|--|---|---|
| 1 | 1 | Ditch blocked | Possible impact of flooding and water quality issues | Clean out ditch and reconnect to the river and meadow | Tescos, CTC, EA, Siddington Parish |
| 2 | 2 | Sluice installed to improve water quality | Percieved increase in flooding in Watermoor | EA to inform who controls governance of sluice. | EA, Watermoor ward, landowner |
| 3 | 3 | Under road drain blocked | Flooding as water cannot move down the floodplain | Clean out ditch and and reconnect to the river and meadow | Landowners, EA, Highways, Siddington Parish |
| 4 | 4 | Under road drain blocked | Flooding as water cannot move down the floodplain | Clean out ditch and and reconnect to the river and meadow | Landowners, EA, Highways, Siddington Parish |
| 5 | 5 | Under road drain blocked | Flooding as water cannot move down the floodplain | Clean out ditch and and reconnect to the river and meadow | Landowners, EA, Highways, Siddington Parish |
| 6 | 6 | Bankside shading | River habitat | Pollarding and tree work | Landowners |
| 7 | 7 | Sluice, bridge and under drains causing obstruction | Flooding as water cannot move down the floodplain | Sluice, bridge and under drain and ditch repaired | Landowers, Siddington Parish council, EA |
| 8 | 8 | Ditch blocked | Waterlogging farm land | Ditch management | Landowners |
| 9 | 9 | Road ditch blocked | Flooding and water logging | Ditch management | Landowners, Highways |
| 10 | 10 | Overhanging | River habitat fenced, but | Pollarding and cutting back scrub | EA, CWDT |

Surface Water Run Off at Harnhill Farm (Lidar)

1:8,000



FIELD Advisers

Needs specialist facilitation and understanding to offer a suite of tools of opportunities for farmers and landowners.

Farming and Integrated Environmental Local Delivery (FIELD) Advisers could be *accredited from any suitable organisation - CCRI/ RAU starting to do this..... Module 3027 FIELD module*

But they must be trusted to be able to represent the farming and landowning community.

Up skill Fep register ?

Churn and Coln WILD projects proposal to Gloucestershire County Council

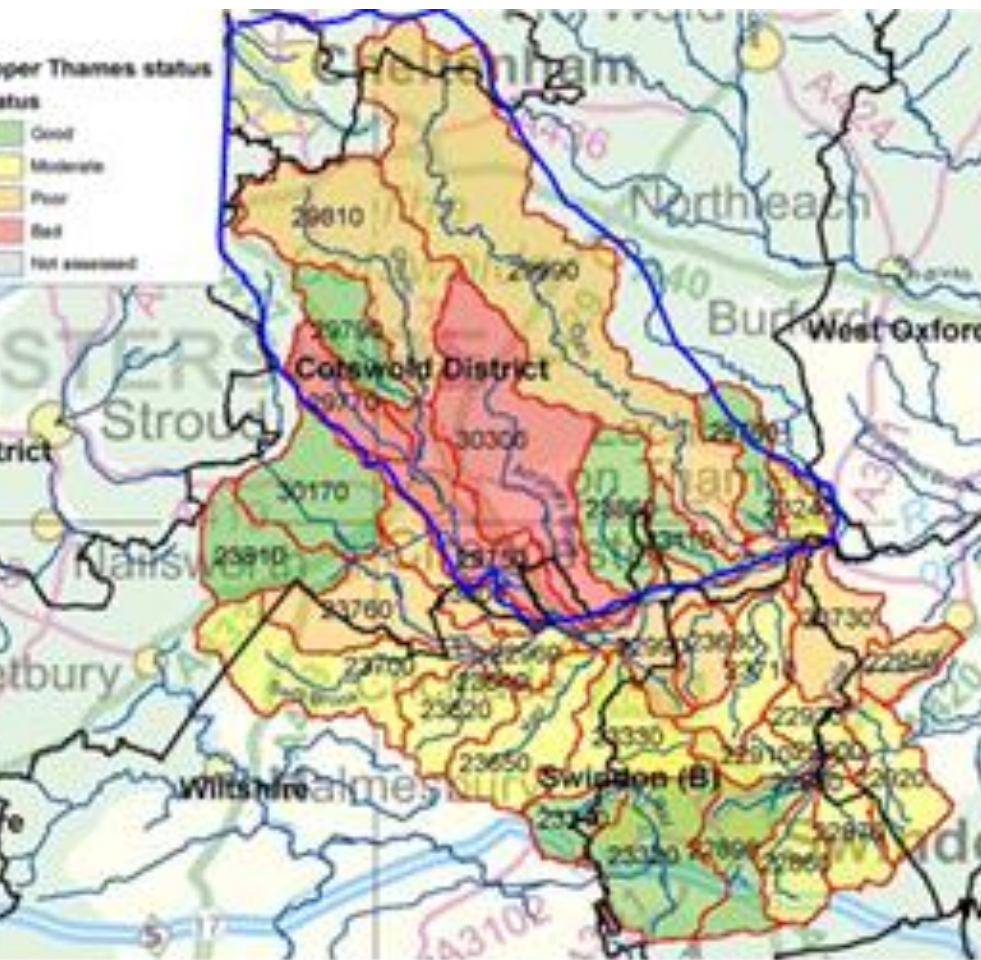
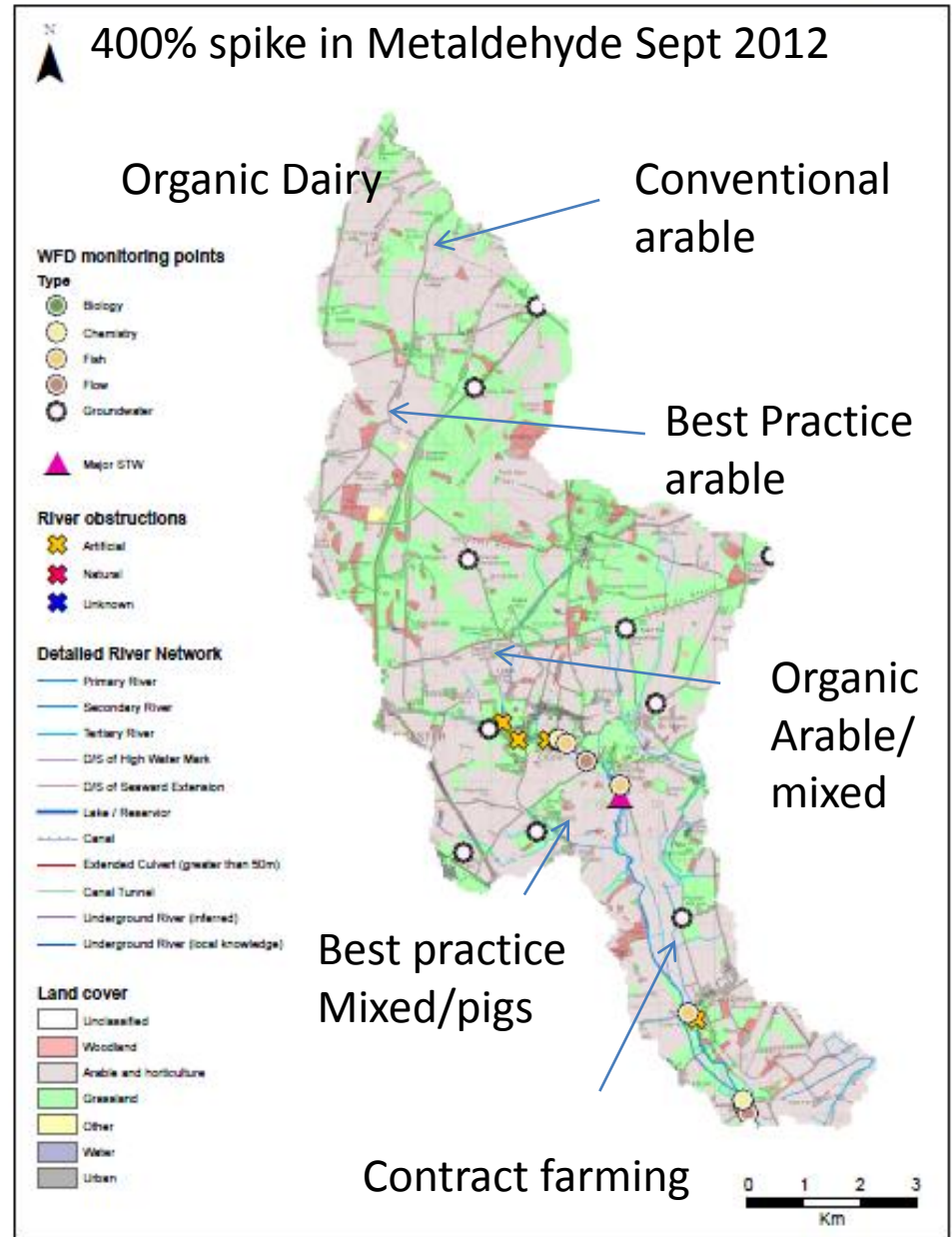


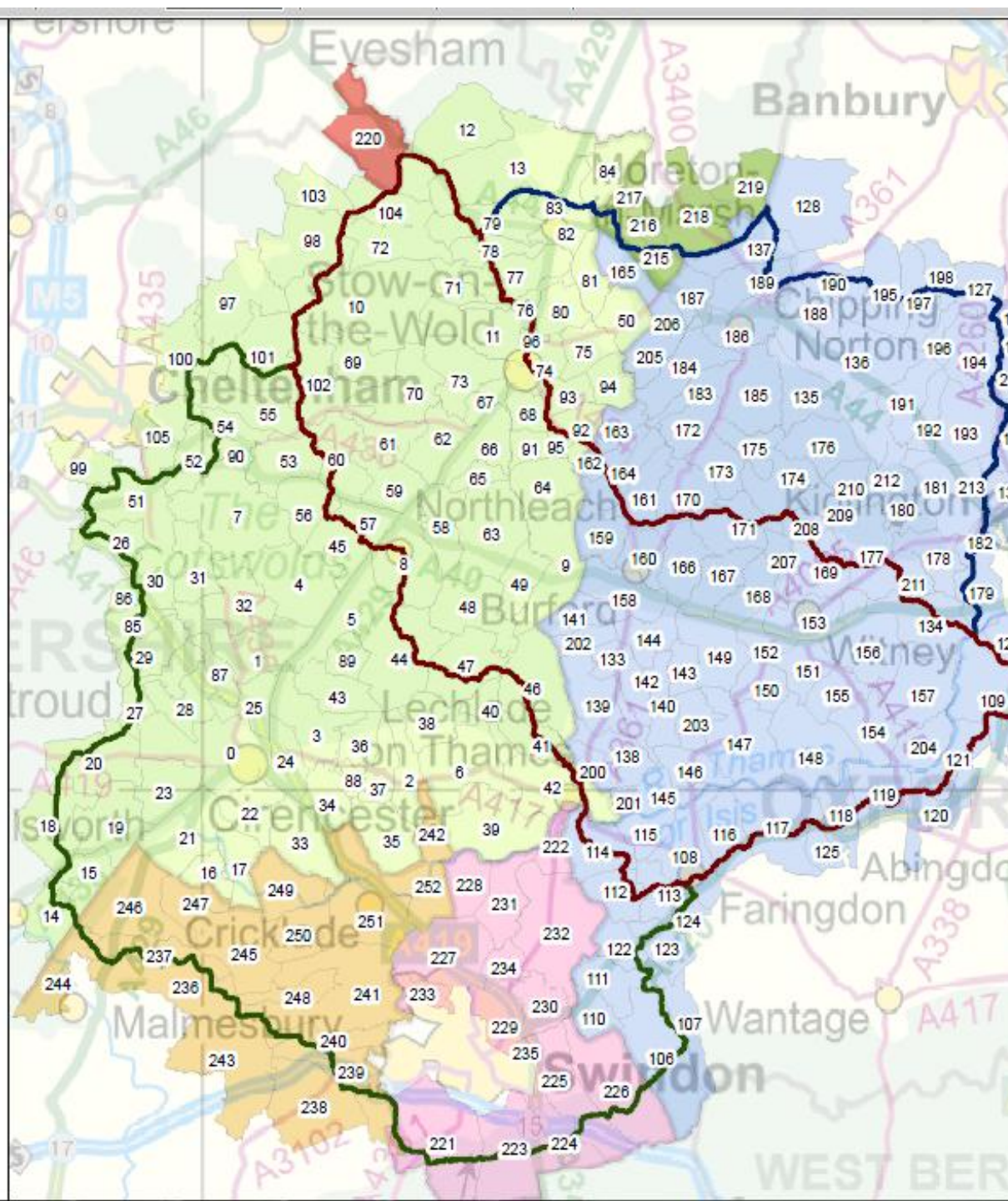
Figure 2: River Churn: £100,000 (25 parishes and 1 town); River Coln: £50,000 (14 parishes) highlighted in blue.

Payments for Ecosystem Services WILD Project- to follow on from Defra Pilot

Local Nature Partnership bid
 £50,000
 £24,000 in kind contribution secured



*Cotswolds/
Gloucestershire
demonstrating
an integrated
framework to
build resilience,
sustainable food,
clean water
integrated flood
management
linking all
initiatives
including growth*



The future? Growing food with the ecosystem? Farmland Ecology module 3093 - in field not in the margins







Jenny.phelps@gloucestershirefwag.org.uk

FIELD ADVISER, Glos FWAG

Thank you

