

# Integrated Delivery through Catchment Sensitive Farming

**Bob Middleton**

**CSF Project Manager: Natural England**



**A clear solution  
for farmers**

**CATCHMENT SENSITIVE FARMING**

## Project Partners



# Defining Integration

- Scales
  - Catchment / sub-catchment / community / farm
- Roles
  - Planning
  - Delivery
- Measures and mechanisms
  - Complex interplay of measures/mechanisms and beneficiaries



» Register for software and email updates  
» Login

PLANET, MANNER-NPK and ENCASH are nutrient management software tools that are freely available for use by farmers and their advisers. These software tools have been developed by ADAS and are maintained and supported by ADAS.

Good management of manufactured fertiliser and organic manure nutrients (e.g. nitrogen, phosphate, potash, sulphur and lime) applied to land is essential to help farmers grow the food that people want to buy, whilst minimising harm to the environment. It is an important objective for farmers to help maximise food production without unnecessary and wasteful applications of nutrients which can result in nutrient pollution of water and air. Nutrient pollution of the environment can cause serious damage and is a significant potential problem that needs to be minimised.

[Click here](#) for further information on PLANET  
[Click here](#) for further information on MANNER-NPK

News and Events  
» PLANET England & Wales  
» PLANET Scotland  
» MANNER-NPK

Quick Links  
» ADAS  
» SRUC  
» FACTS  
» Fertiliser Manual (RB2)  
» NVZs (England)  
» NVZs (Scotland)  
» NVZs (Wales)  
» Environment Agency  
» Tried and Tested



# Nutrient Management Plan

*Created by the industry, for the industry*

REVISED



## AHDB Nutrient Management Guide (RB209) available to view via new App

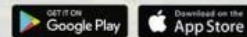


The new Nutrient Management Guide (RB209) makes nutrient management planning more straightforward and accurate.

The app includes all seven sections:

1. Principles of nutrient management and fertiliser use
2. Organic materials
3. Grass and forage crops
4. Arable crops
5. Potatoes
6. Vegetables and bulbs
7. Fruit, vines and hops

Download now from the Apple Store and Google Play Store



One Measure = multiple environmental / business benefits (eg nutrient planning)



**A clear solution for farmers**

CATCHMENT SENSITIVE FARMING

### Project Partners



One Measure =  
multiple  
beneficiaries  
(eg Bathing Waters)

## Visits to the coast

NATURAL  
ENGLAND

Between March 2014 and February 2015, **13 million** holidays and **123 million** tourism day visits were taken to the English coast generating **£7 billion** for the economy.

[www.gov.uk/natural-england](http://www.gov.uk/natural-england)



**A clear solution  
for farmers**

CATCHMENT SENSITIVE FARMING

Project Partners

 Department  
for Environment  
Food & Rural Affairs

 NATURAL  
ENGLAND

 Environment  
Agency

One benefit =  
multiple measures  
(eg soil  
management)



**A clear solution  
for farmers**  
CATCHMENT SENSITIVE FARMING

Project Partners



Department  
for Environment  
Food & Rural Affairs

NATURAL  
ENGLAND

Environment  
Agency

# What is CSF?

- Established in 2006.
- Works with farmers in England to reduce diffuse pollution from agriculture
- Uses advice and incentives to drive voluntary action.
- CSF is a Water Framework Directive measure.

- CSF is targeted to priority catchments and farms based on pollution risk.
- We deliver advice directly and via private sector advisers.
- Incentives through Countryside Stewardship – capital works and land management.

- CSF is funded by Defra, Rural Development Programme for England and some Water Companies.



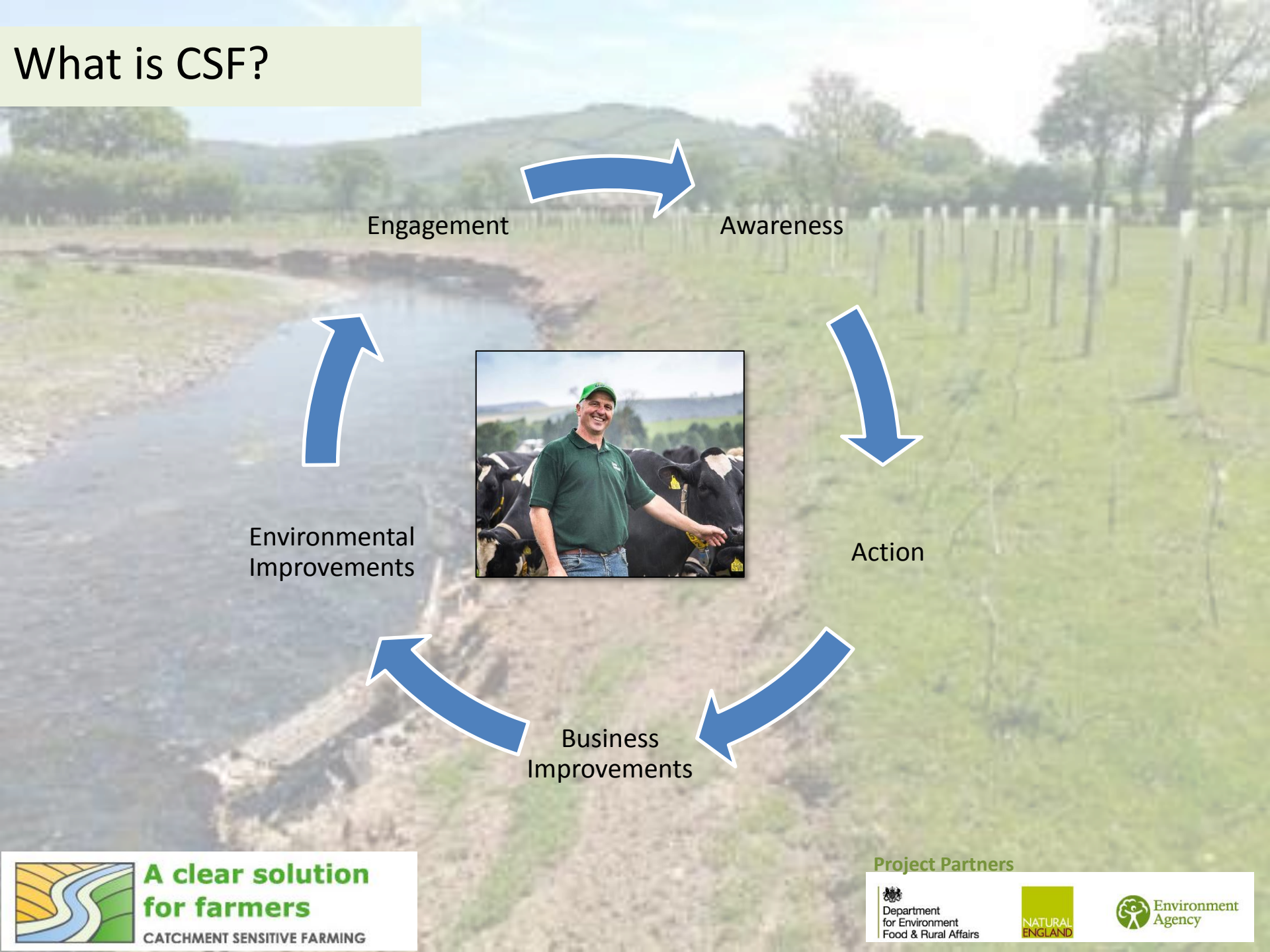
- We currently have 80 experienced, dedicated CSF Officers in catchments.
- They focus on farmer engagement and technical advice.



## Project Partners



# What is CSF?



Engagement

Awareness

Action

Business  
Improvements

Environmental  
Improvements



### Project Partners

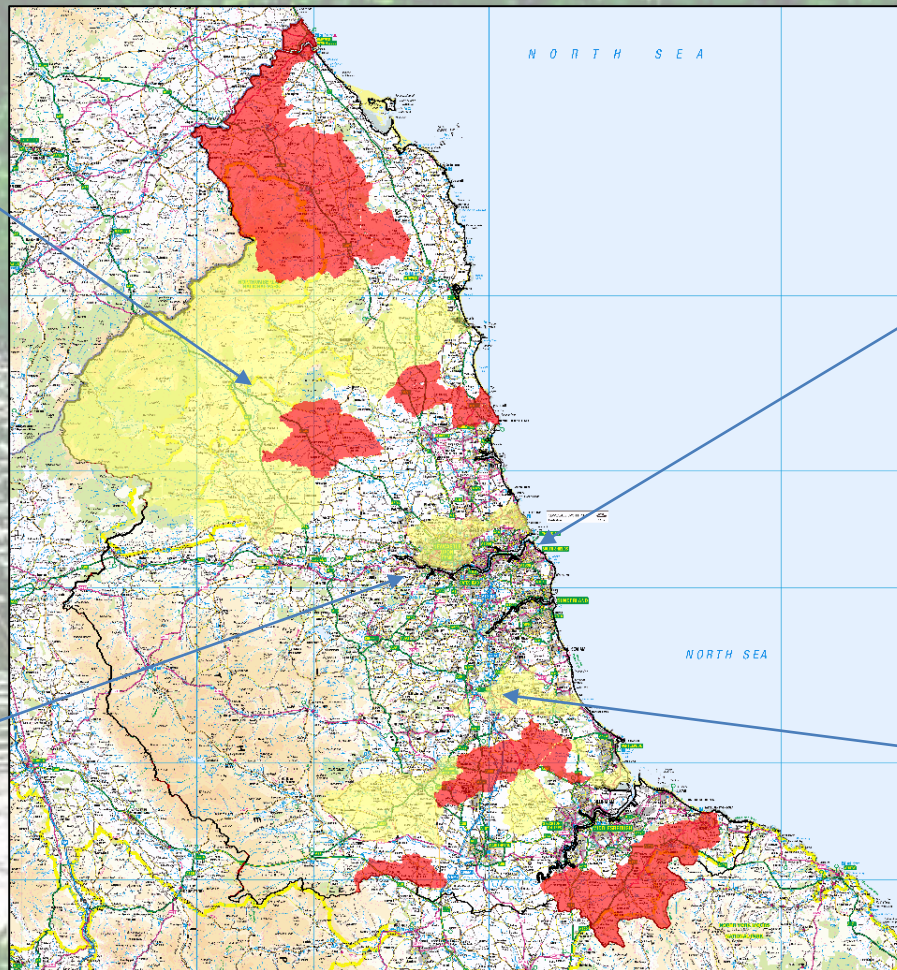
# Integration at Catchment level

## Evidence

Delivery shaped by integrated evidence collated into evidence prospectus.

## Planning

Close working with Catchment Partnerships to link CSF delivery to wider catchment priorities



## Targeting

Use Countryside Targeting defined on integrated water priorities and linked to other environmental priorities

## Delivery

Close working with partners and other stakeholders



**A clear solution  
for farmers**

CATCHMENT SENSITIVE FARMING

## Project Partners





# Alconbury Project



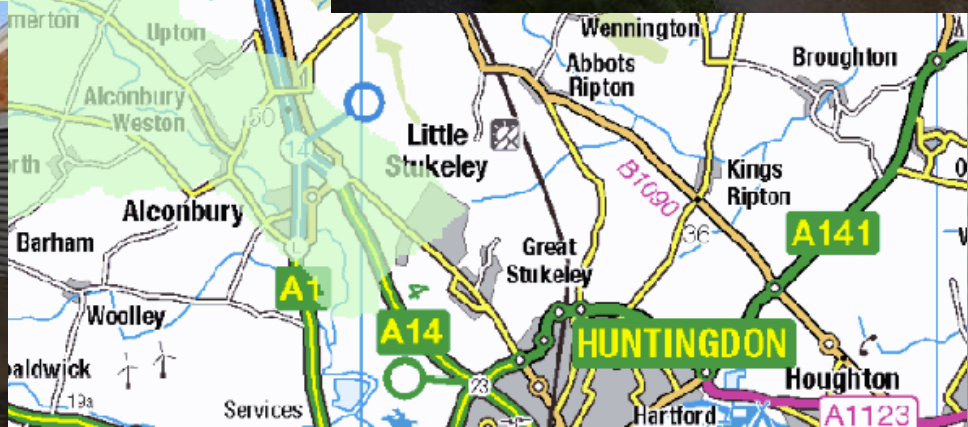
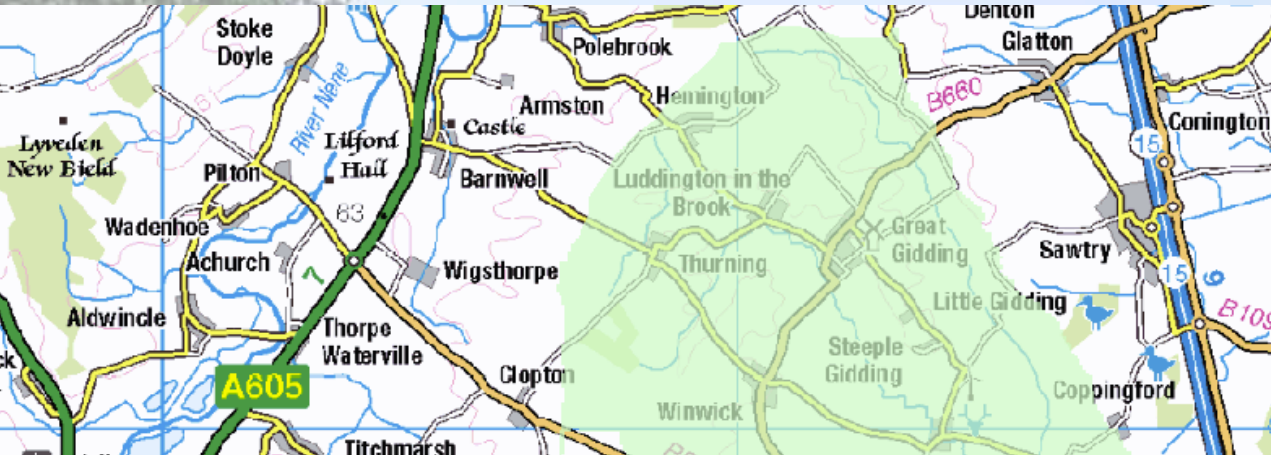
**A clear solution  
for farmers**

CATCHMENT SENSITIVE FARMING

Project Partners

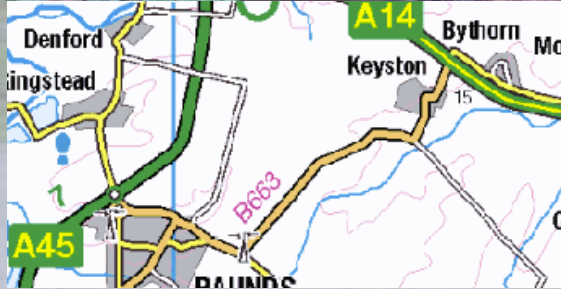
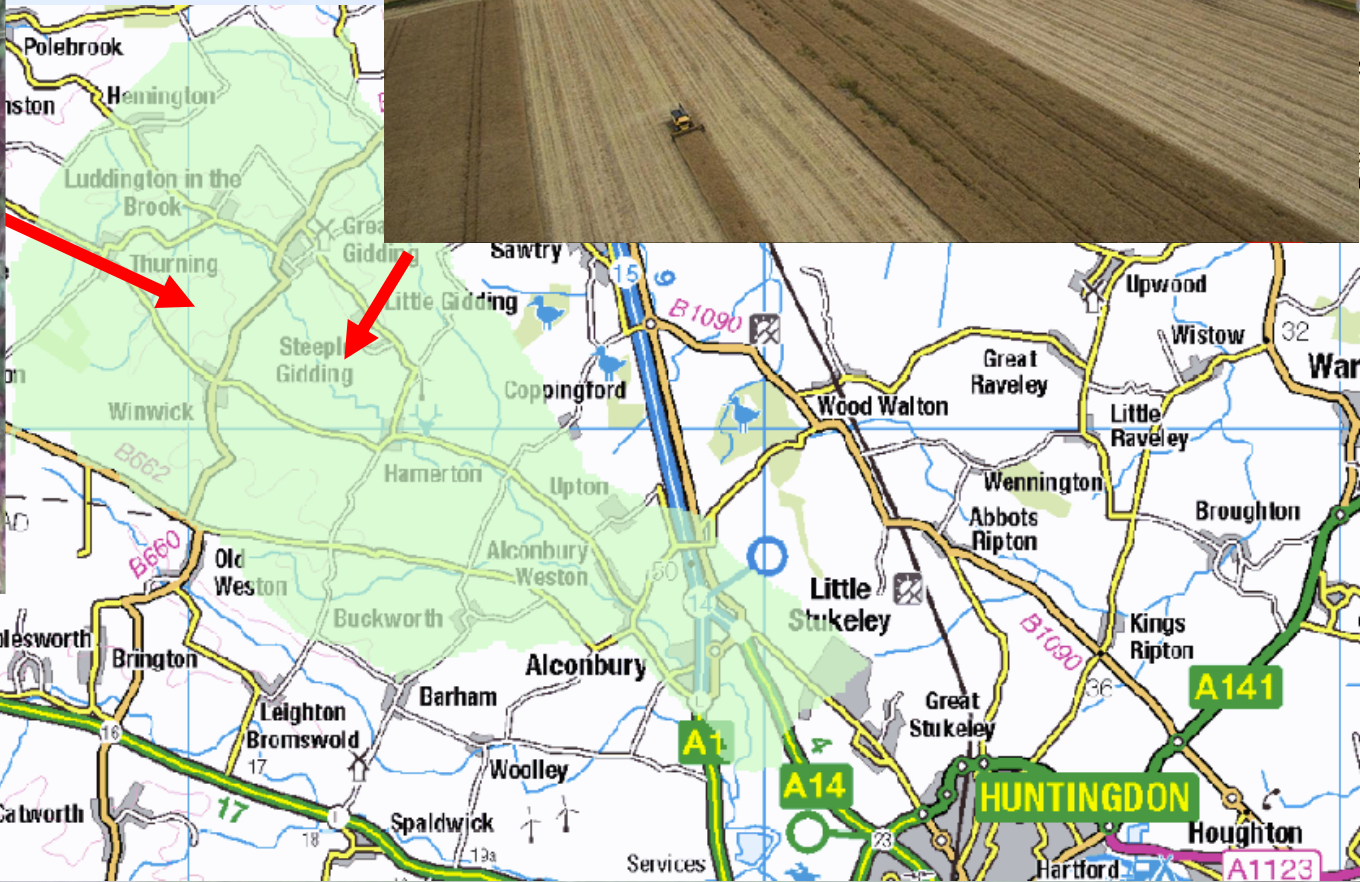


# Alconbury Project



## Project Partners





**A clear solution for farmers**  
CATCHMENT SENSITIVE FARMING

**Project Partners**

- Department for Environment Food & Rural Affairs
- NATURAL ENGLAND
- Environment Agency



## A clear solution for farmers

CATCHMENT SENSITIVE FARMING

### Project Partners



# Stockwathdale Project



**A clear solution  
for farmers**  
CATCHMENT SENSITIVE FARMING

## Project Partners

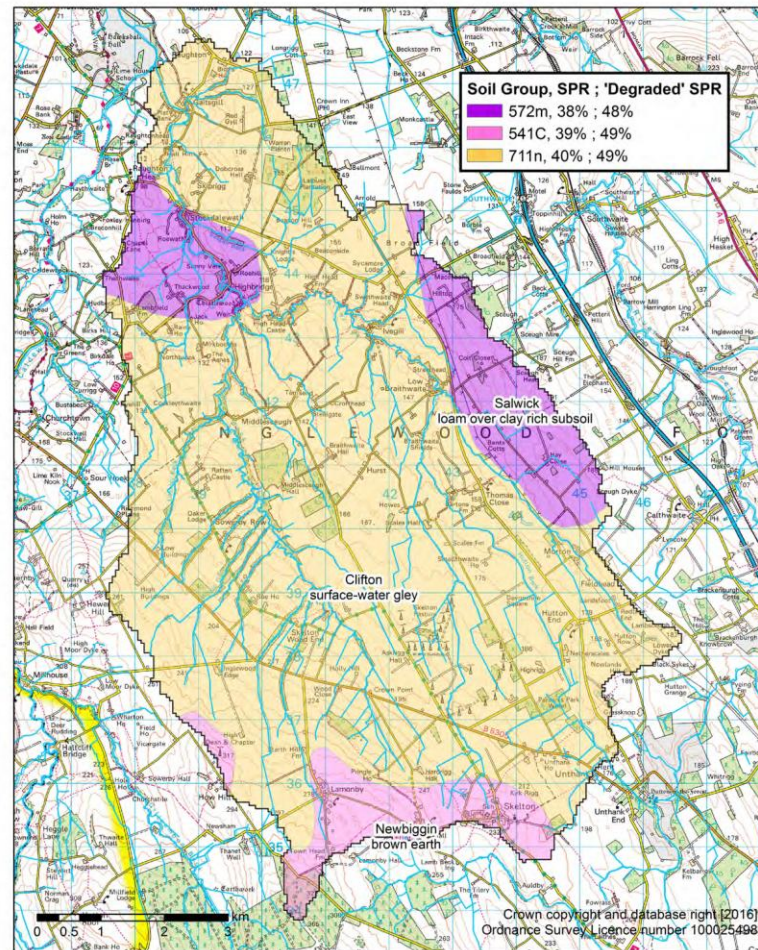


Department  
for Environment  
Food & Rural Affairs

NATURAL  
ENGLAND

Environment  
Agency

# Stockwathdale Project



Propensity of soils to generate rapid runoff.  
Stanard Percentage Runoff (SPR) value indicates percentage of rainfall contributing to rapid surface runoff.  
'Degraded' SPR value reflects potential impact of agricultural activity cultivation and/or grazing on soil structure and porosity.

Project Partners



**A clear solution  
for farmers**

CATCHMENT SENSITIVE FARMING

Department  
for Environment  
Food & Rural Affairs



# Pathways e.g. Loss of boundary features

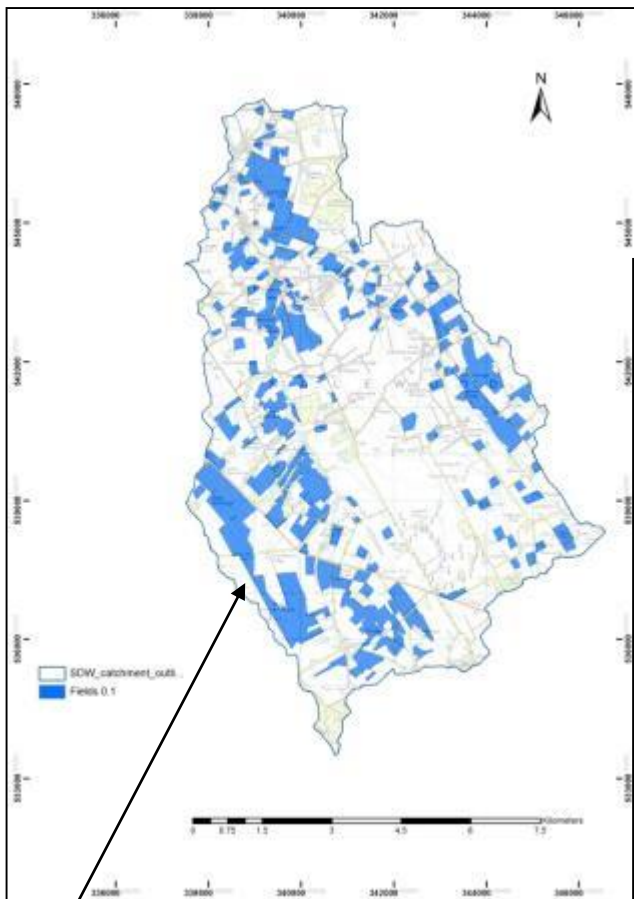


1880's

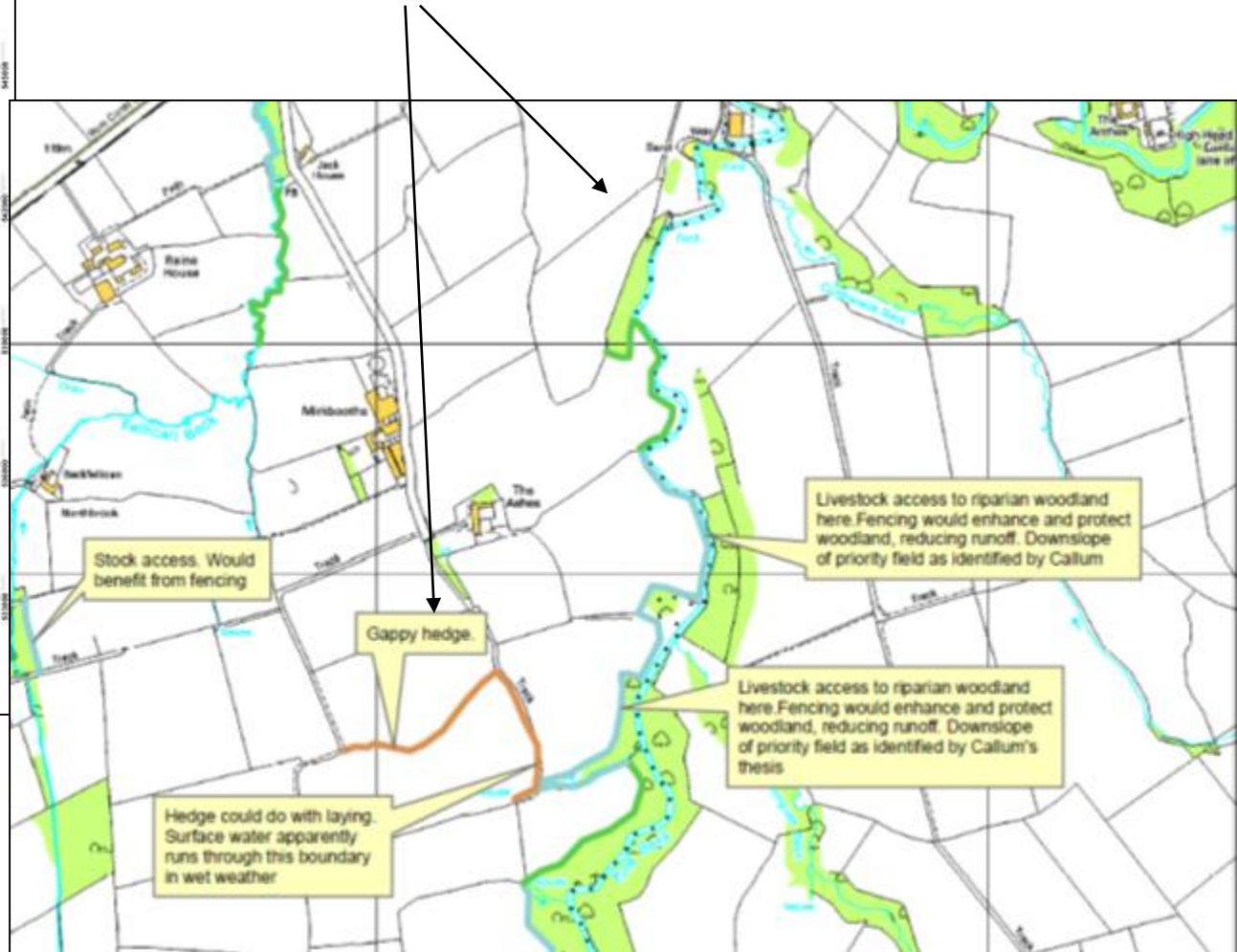


Present

# Boundaries and riparian zone -8%



# Targeting soil compaction -16%



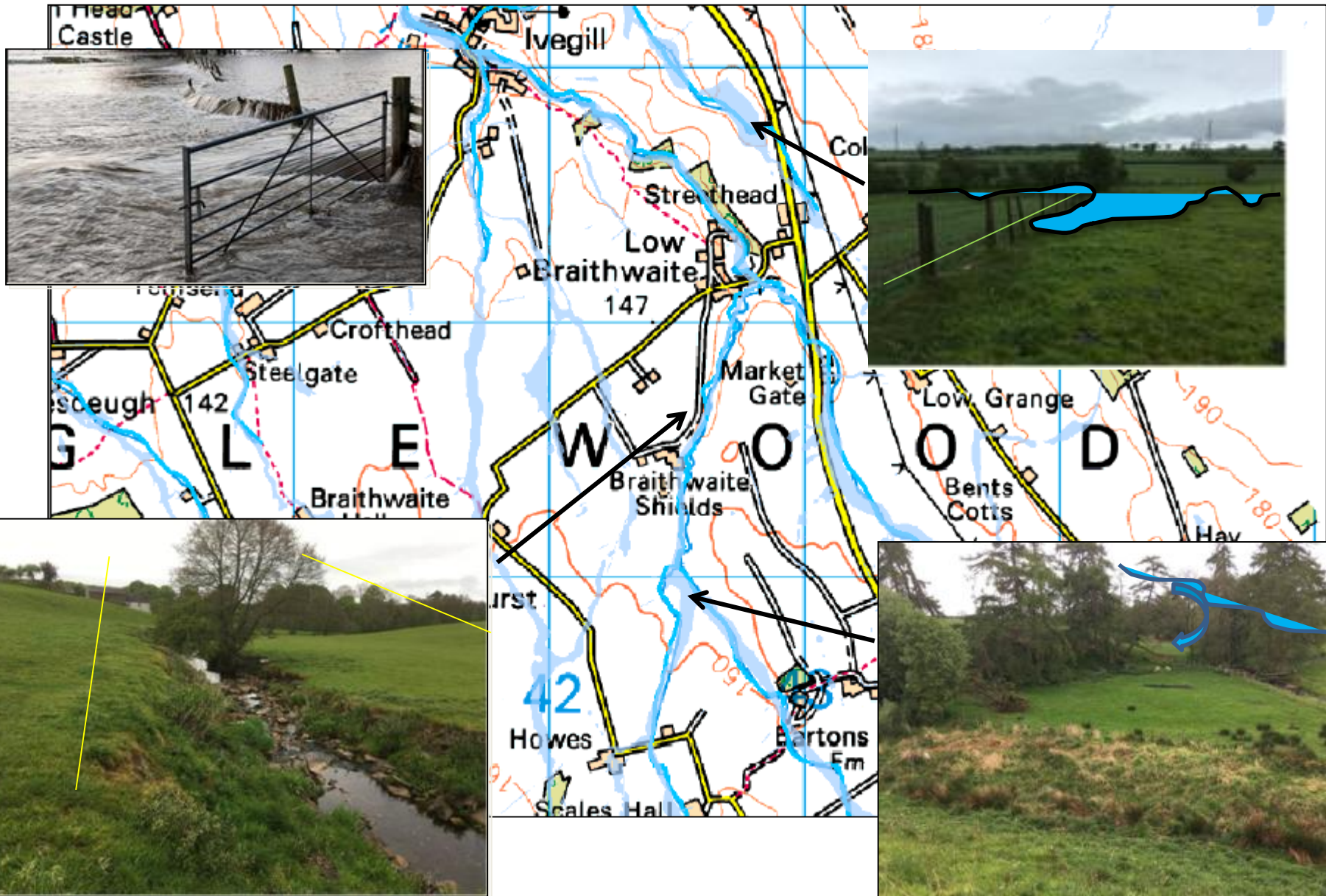
**A clear solution for farmers**

CATCHMENT SENSITIVE FARMING

## Project Partners







**A clear solution  
for farmers**

CATCHMENT SENSITIVE FARMING

**Project Partners**



# CSF: mechanisms integration

- Countryside Stewardship integrates water with other environmental priorities through:
  - Targeting
  - Prioritisation / scoring
  - Delivery – water with wildlife package
  - Multi-benefit measures eg low input pasture., riparian strips.
  - Single point of contact



**A clear solution  
for farmers**

CATCHMENT SENSITIVE FARMING

## Project Partners

  
Department  
for Environment  
Food & Rural Affairs

  
NATURAL  
ENGLAND

 Environment  
Agency

# Potential barriers

- Complexity
- Too many processes trying to integrate.
- Forgetting who will undertake the work.
- Not engaging the right people at the right time.
- Gold plating.



**A clear solution  
for farmers**

CATCHMENT SENSITIVE FARMING

## Project Partners



# Integration: what works

- Integrating messages at the local/farm level
- Planning and co-ordination at catchment level through one process.
- Working with partners from initiation to completion and review.
- Consistent messages across organisations/initiatives.
- Keep it simple for the non-specialist.
- Have a clear understanding of integration and knowing when you get there.



**A clear solution  
for farmers**

CATCHMENT SENSITIVE FARMING

## Project Partners



Thank you.  
Any questions?

[Bob.middleton@naturalengland.org.uk](mailto:Bob.middleton@naturalengland.org.uk)

Search 'Catchment Sensitive Farming'  
for more information



**A clear solution  
for farmers**

CATCHMENT SENSITIVE FARMING

Project Partners

