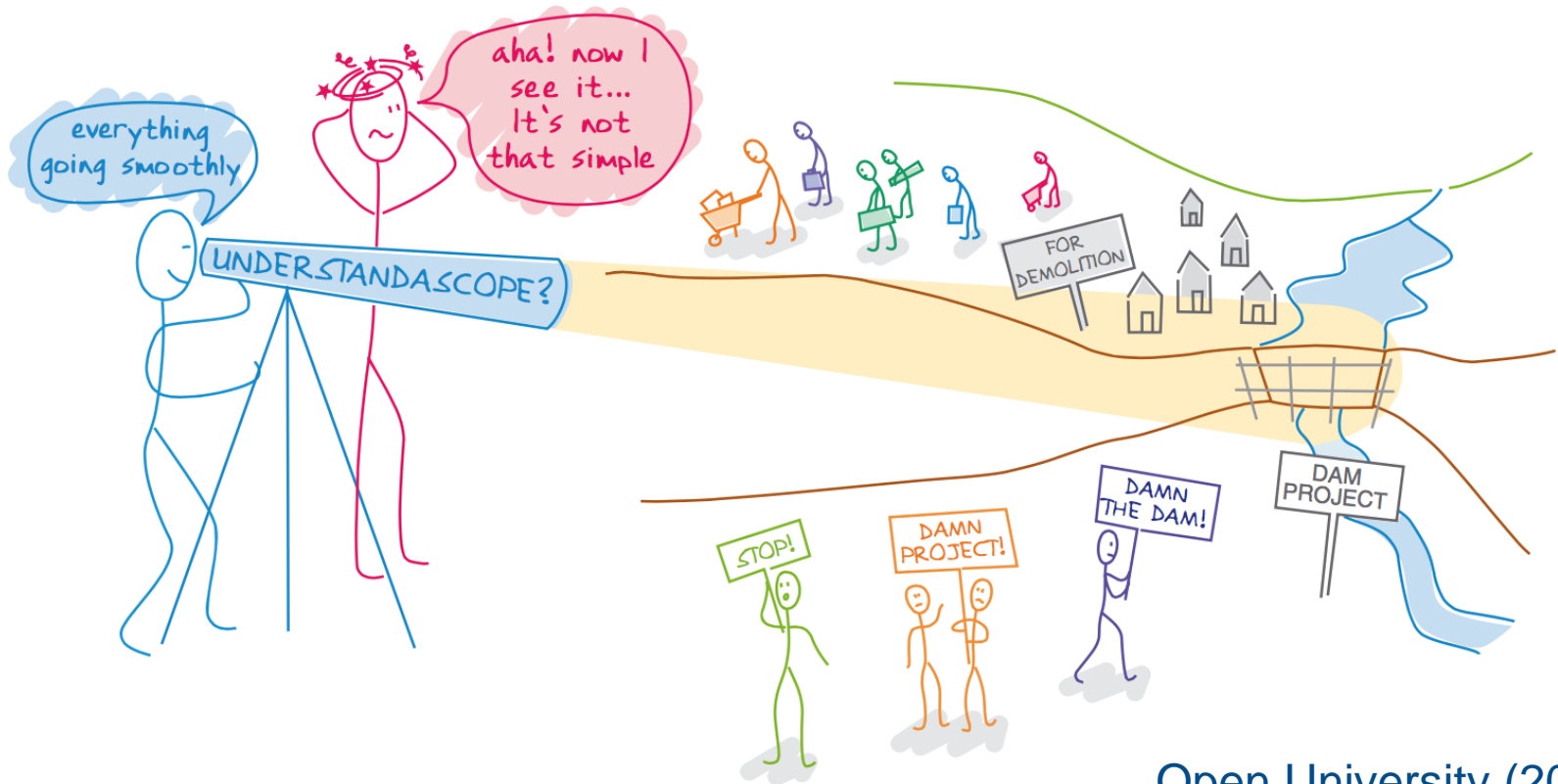


# Value of integrated catchment delivery

- ➔ Today - inspiring champions, don't wait build relationships, share learning and knowledge
- ➔ Its about people: Sharing a vision, working with others early, plan, do, check, review, refine and go
- ➔ What scale do we come together? Catchments?
- ➔ So what, why? Economic estimates
- ➔ Delivery? Medlock, Sheffield, Wandle. How can we make best practice business as usual?
- ➔ Avoiding this... Liverpool riots, London's great stink

# Climate Adaptation and Water Governance: Seeing the bigger picture?



Open University (2006)

# Why? To save money and achieve a better return

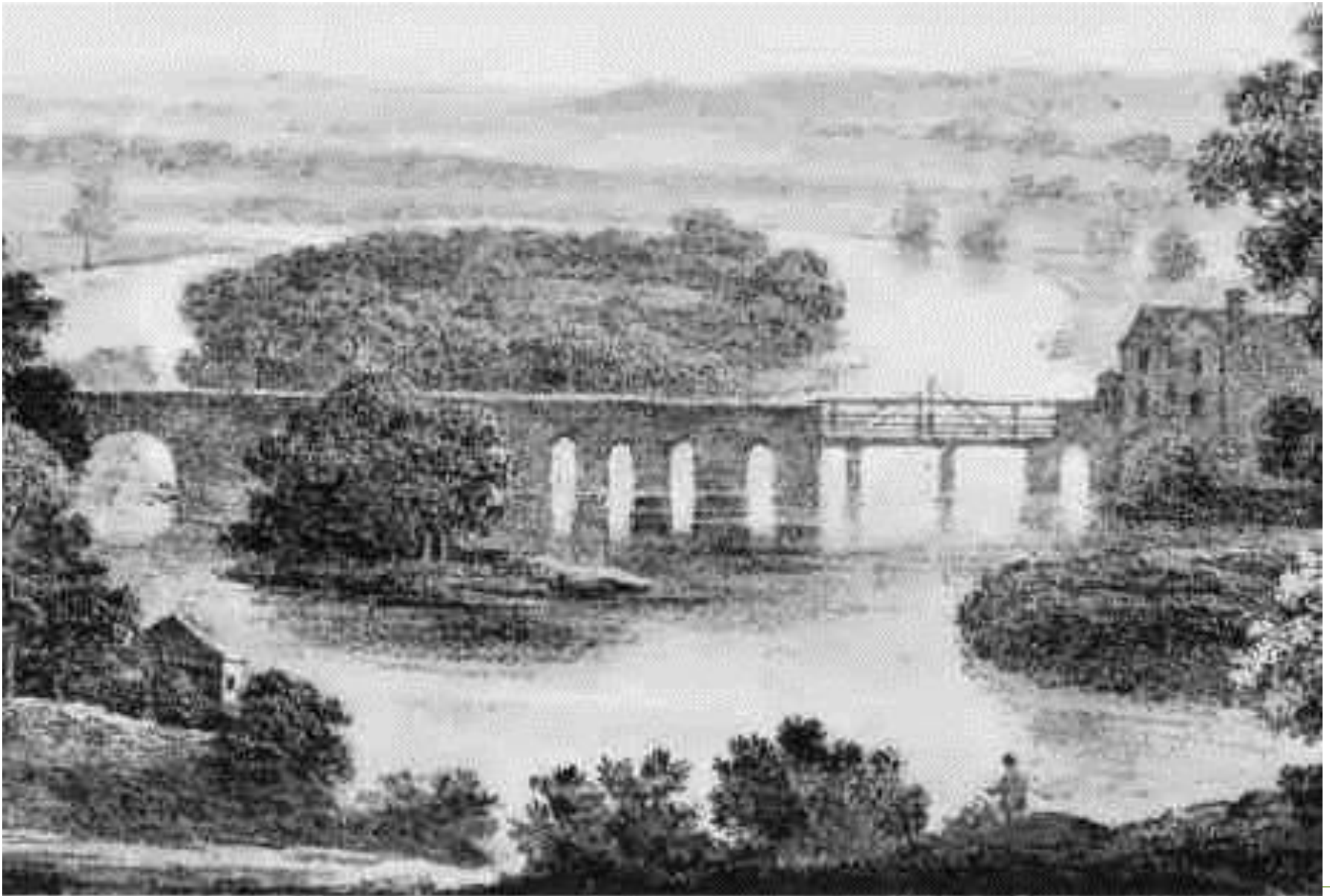
## Economic case integrated approach – costing lessons learnt

### Warning!!! Estimates only but based on real life examples

Lesson	Cost low k	Cost high k
<b><u>Total cost (k) of lessons learnt below each year or so (estimation only):</u></b>	<b><u>528</u></b>	<b><u>3624</u></b>
funding timescales and working in winter	25	30
farmer workshops, comms and benefits clear	5	5
duplicating visits	15	35
mixed messages: impact on community and partners	25	200
volunteers	30	80
<b>aligning plans</b>	<b>50</b>	<b>1,000</b>
workshop timings (not when community can make it)	5	9
workshops: locations (external neutral), paid for, open to all	3	10
comms, social media and website	5	10
.Gov being decent	20	20
<b>catchment plans as local authority planning documents</b>	<b>50</b>	<b>1,000</b>
water company business plans outcome focused, ways of thinking	50	500
EA policy on permitting more flexible	100	500
upstream thinking minimising capital works/treatment		
project appraisal - academic partnerships	25	25
project appraisal - resolving adopting lessons learnt	20	100
maintenance programme and communications	100	100

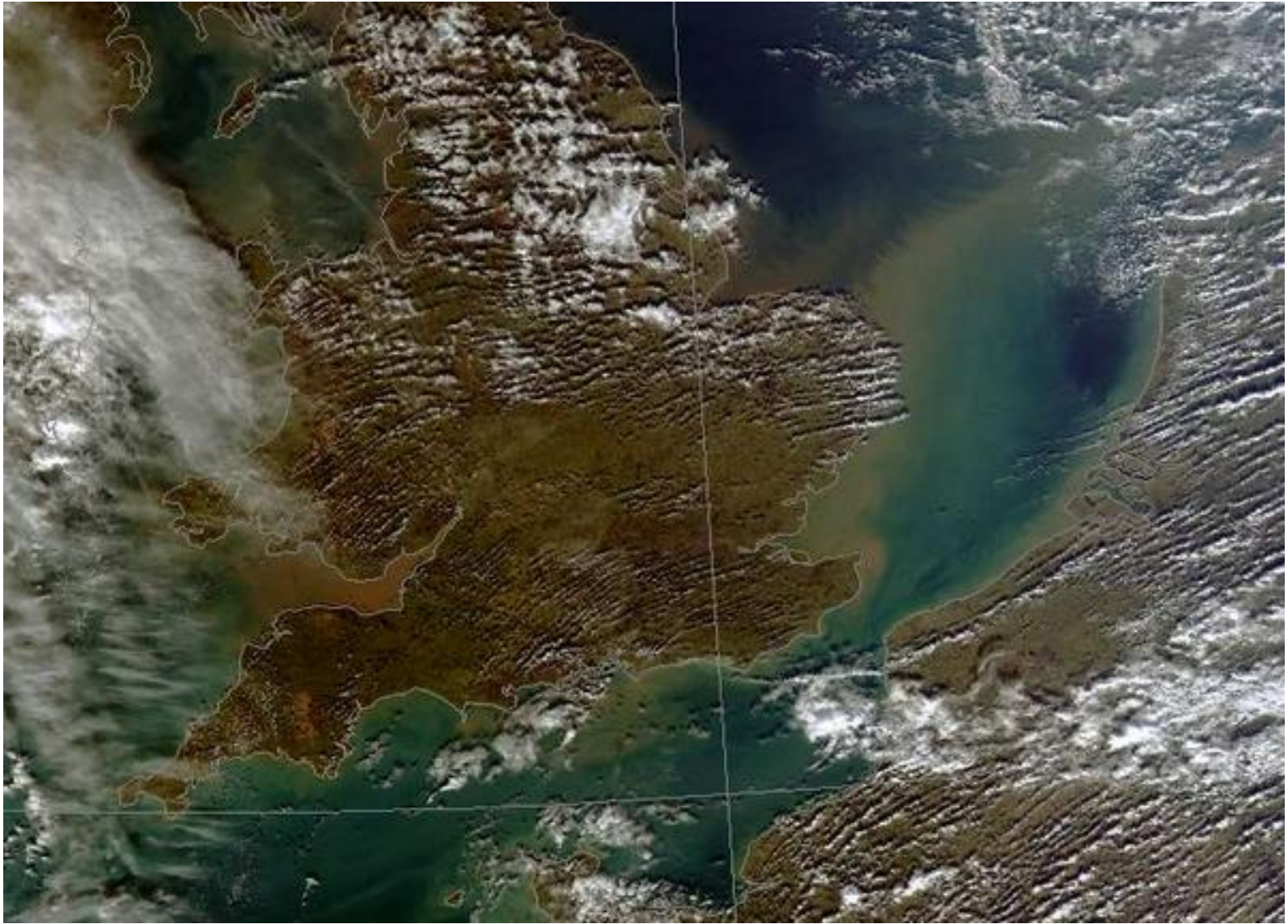
Please note the group did not discuss adopting catchment based approach which may save significant costs due to one place for discussion and partnership.

# Thames at Caversham Reading once looked like this

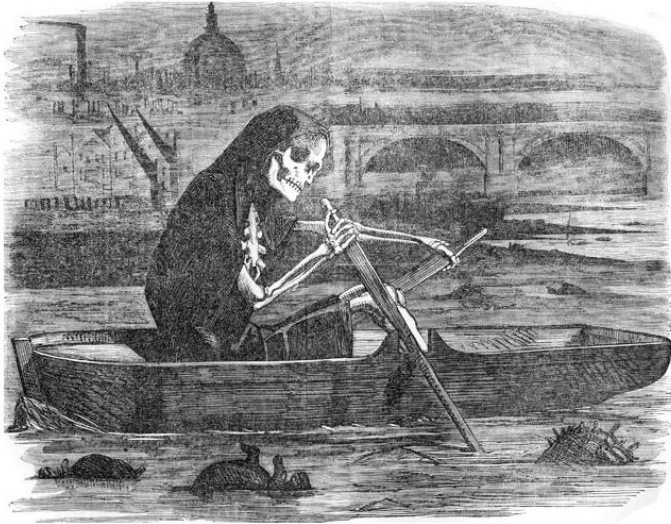


Caversham Bridge.





# 1858 Thames stink, flooding and we didn't look after nature



## EAST COAST FLOOD DISASTER

Over 150 Reported Dead

GREAT STORM SWEEPS  
SEA INLAND

Many Thousands Evacuated

The death-roll in disastrous floods along the East Coast from Middlesbrough to the Thames yesterday had risen to over 150 early this morning and was still mounting.

Towns and villages were swept by high seas driven by the storms which, on the other side of the country on Saturday, overwhelmed the Stranraer-Larne ferry and caused the loss of 133 lives.

So far as is known deaths in the areas which suffered most severely



# Mersey Basin Campaign



- engaging individuals, businesses and communities
- improving river basin quality
- encouraging sustainable waterside regeneration
-



# Integrated Catchment Approach everyone's important



# First recorded salmon in the Don for over 150 years. Salmon to Sheffield, inspiring...

In the event you needed a pick-up on a Monday morning, see great news below about salmon juvenile, River Dearne, upstream of Sprotborough fish pass. A great environmental outcome already from £500k Defra GiA investment in 13/14.

**Martin Slater, Environment Programme Manager, Yorkshire**

**From:** Masters, Jerome

**Sent:** 17 June 2015 14:13

**Subject:** Salmon juvenile caught in the River Dearne

**Importance:** High

Hello,

It isn't often that I get to write an e-mail this good!

14cm long juvenile salmon caught by our electric fishing team on the River Dearne. The salmon is likely to have been born around new year, 2014, so parents will have used the Sprotborough fish pass just after it opened. This is the first recorded salmon spawning in the Don catchment for over 150 years.

**Alex:** Can we work on a press release for this please (great timing for 'iconic fish week').

**Jo:** Would you like to tell the Don Network? Pete Wall has a little bet going with Chris Firth about whether the first salmon will be from the Don or the Dearne!

*Dr Jerome Masters MIFM, Fisheries, South & West Yorkshire*



## Sprotborough Fish & Eel Pass

Who: Environment Programme      When: 2013-2014


**Where:** Sprotborough on the River Don to the west of Doncaster.

**NGR:** SE5376601382

**What:** We have worked with the Canal & River Trust, the local landowner and Don Gorge Community Group with support from the Don Catchment Rivers Trust to deliver this fish and eel pass.


This is a two stage baffled larrier multi species fish pass and eel pass. This combined structure will bypass the weir and make a step change to the connectivity of the River Don and the biodiversity of the habitats along the river corridor.

**Why:** Compared to recent industrial history, the River Don has undergone a radical change in its fortunes. Industry polluted the river rendering it lifeless along large stretches. This was compounded by the demands of navigation structures such as weirs which fragmented the river.



**Water through the fish pass**

Before the fish and eel pass, Sprotborough Weir remained the River Don's most downstream barrier to fish migration. This project has reconnected half the length of the Don and 11km of the River Dearne to the Humber Estuary. Salmon are passing through the fish pass and are now seen jumping at the next barrier upstream.



This project builds on other work that is going on in the Don Catchment. The Don Catchment Rivers Trust is seeking Heritage Lottery Funding to return salmon to Sheffield. It complements with the upstream Dearne Valley Nature Improvement Area. Yorkshire Water is investing heavily in improved water quality upstream at Blackburn Meadows. In June 2015 a juvenile salmon was caught upstream of Sprotborough fish pass. This is the first recorded salmon spawning in the Don catchment for over 150 years.

Environment Programme project lead Keith Davie said of the project, "This is a fantastic result as it delivers so many benefits for communities in Sheffield, Rotherham and wider South Yorkshire not to mention the immense benefits to wildlife."

**Key Contact:** Keith Davie

[www.environment-agency.gov.uk](http://www.environment-agency.gov.uk)



**Schools shout Medlock trout**

# Sponsors, thank you! inspiring champions, don't wait build relationships



# Numbers

1. 5.2mill (or 1/6<sup>th</sup>) properties at risk of flooding in England
2. £2.2bn effect of flooding and managing flood risk each year costs us
3. 100% UK economy dependant on water
4. 30% topsoil down the drain, degrading soil quality, 90 harvests left?
5. 42% floodplain in England and Wales physically separated from floodplain
6. >1:10 UK wildlife species threatened with extinction
7. ¼ of England's water bodies at good ecological status
8. >£30bn p.a. added to UK economy if ecosystems were properly maintained, if neglected could cost economy > 20bn p.a.
9. £100bn to be spent by 2032 on farm subsidies, flood defences and modernising Britain's water infrastructure
10. UK National forest provides a 4.8 times return on investment by 2100