



Climate Resilience and Extreme Incidents

Julie Foley

Director FCRM Strategy & National Adaptation
Environment Agency

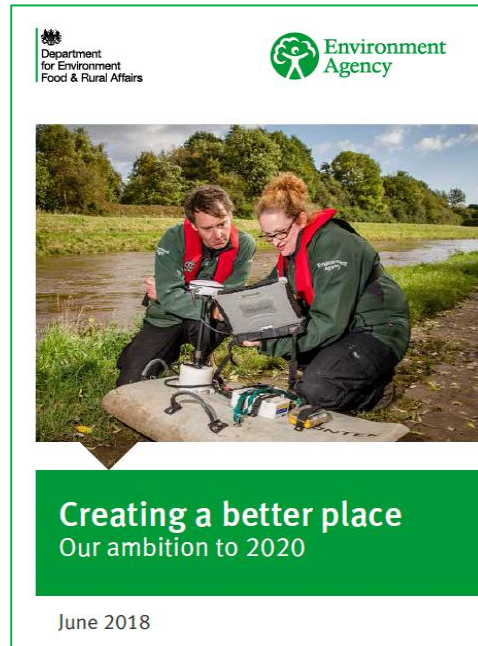
30 April 2019

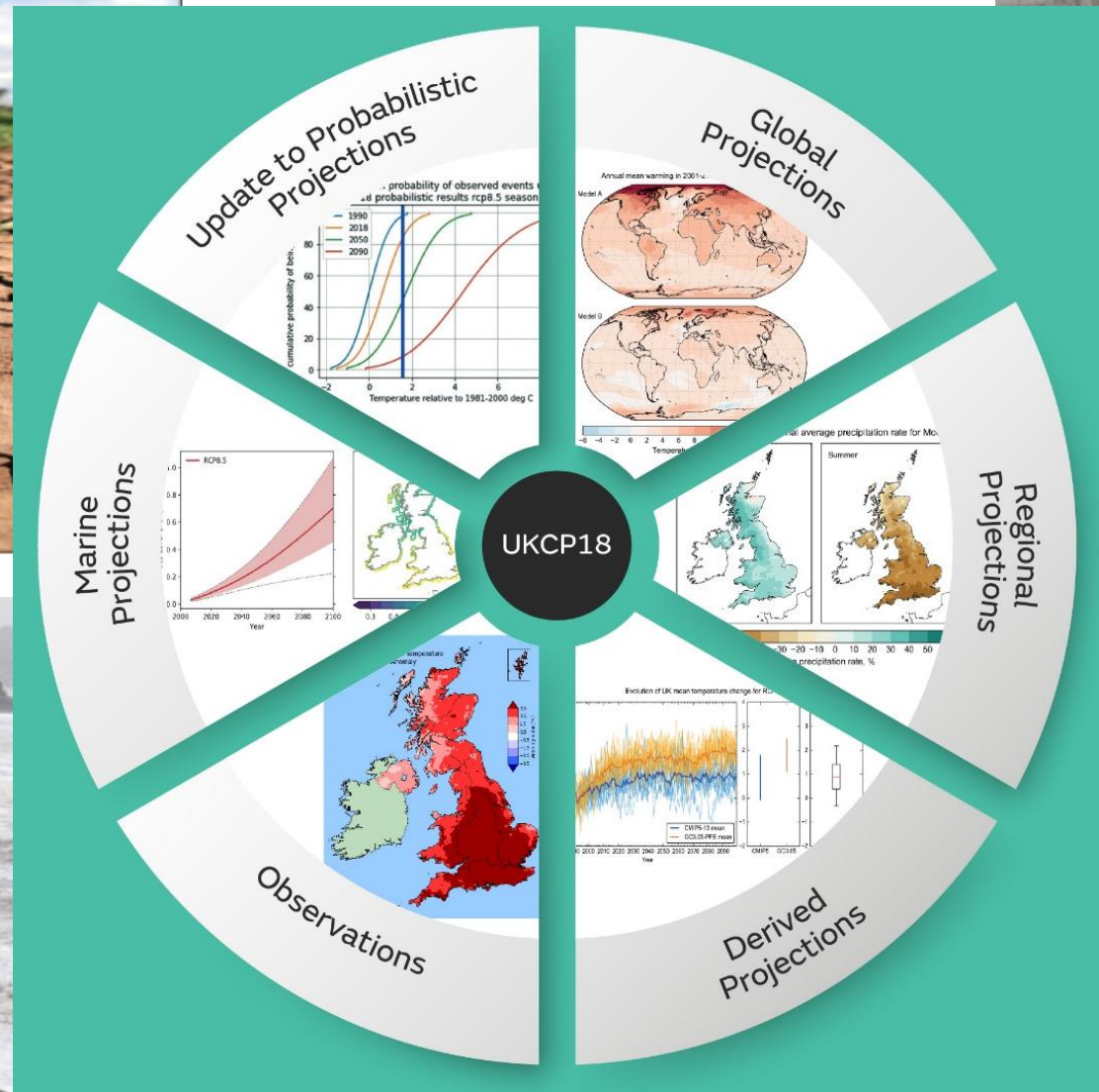
The Environment Agency

We work to create better places for people and wildlife, and support sustainable development.

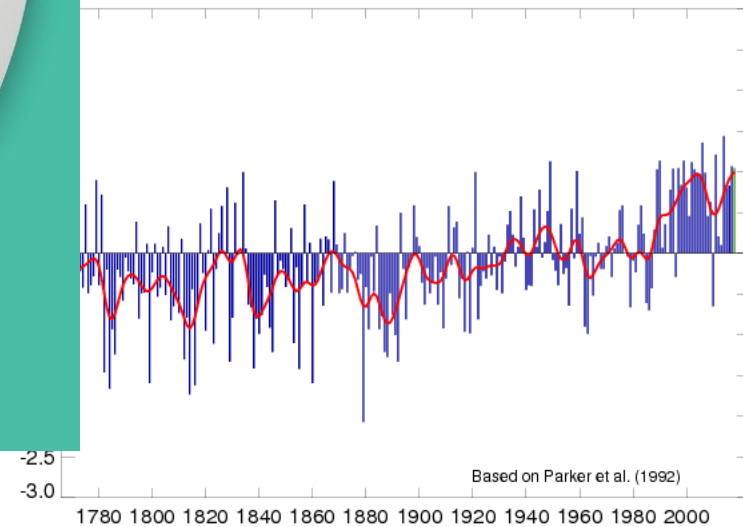


The opportunity and evidence





Mean Central England Temperature Annual anomalies, 1772 to 13th Nov 2018



UKCP18: about the new projections

Long term investment scenarios 2019

With optimum investment, it is possible to prevent a rise in property damages over the next 50 years even with high climate change and many more homes in the floodplain



High (4°C)
climate
change

Continuation of
current outcomes of
planning policy and
its implementation

£1bn annual
investment in
conventional
FCERM

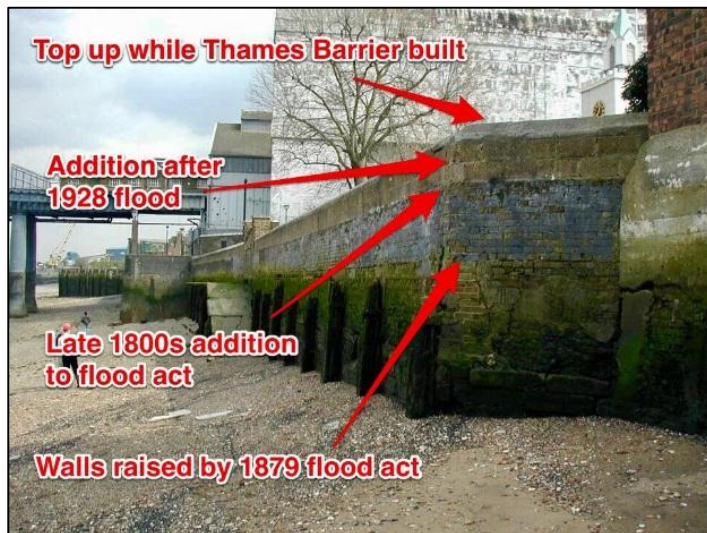
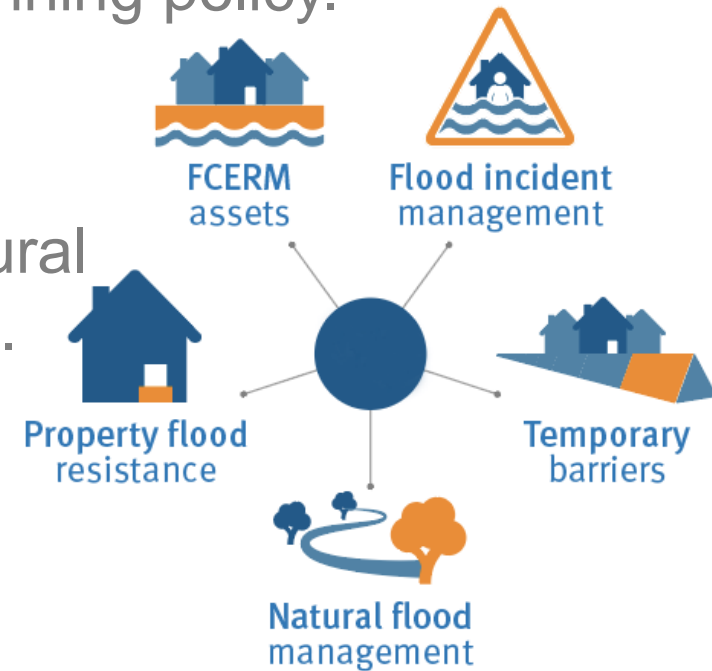
Risk stays at
about its current
level over 50
years

LTIS 2019 key findings



Development: total properties at risk will double over the next 50 years but economic damages will be mitigated by effective planning policy.

Different ways to manage risk: in combination with “conventional” flood protection, property flood resilience, natural flood management and temporary barriers also offer benefits.



Very high levels of protection: theoretically could halve the number of properties at high/medium risk. But there are technical and social acceptability limitations.

Infrastructure impacts



Our role in planning



Building climate resilience into everything we do – a case study...



Manchester Evening News

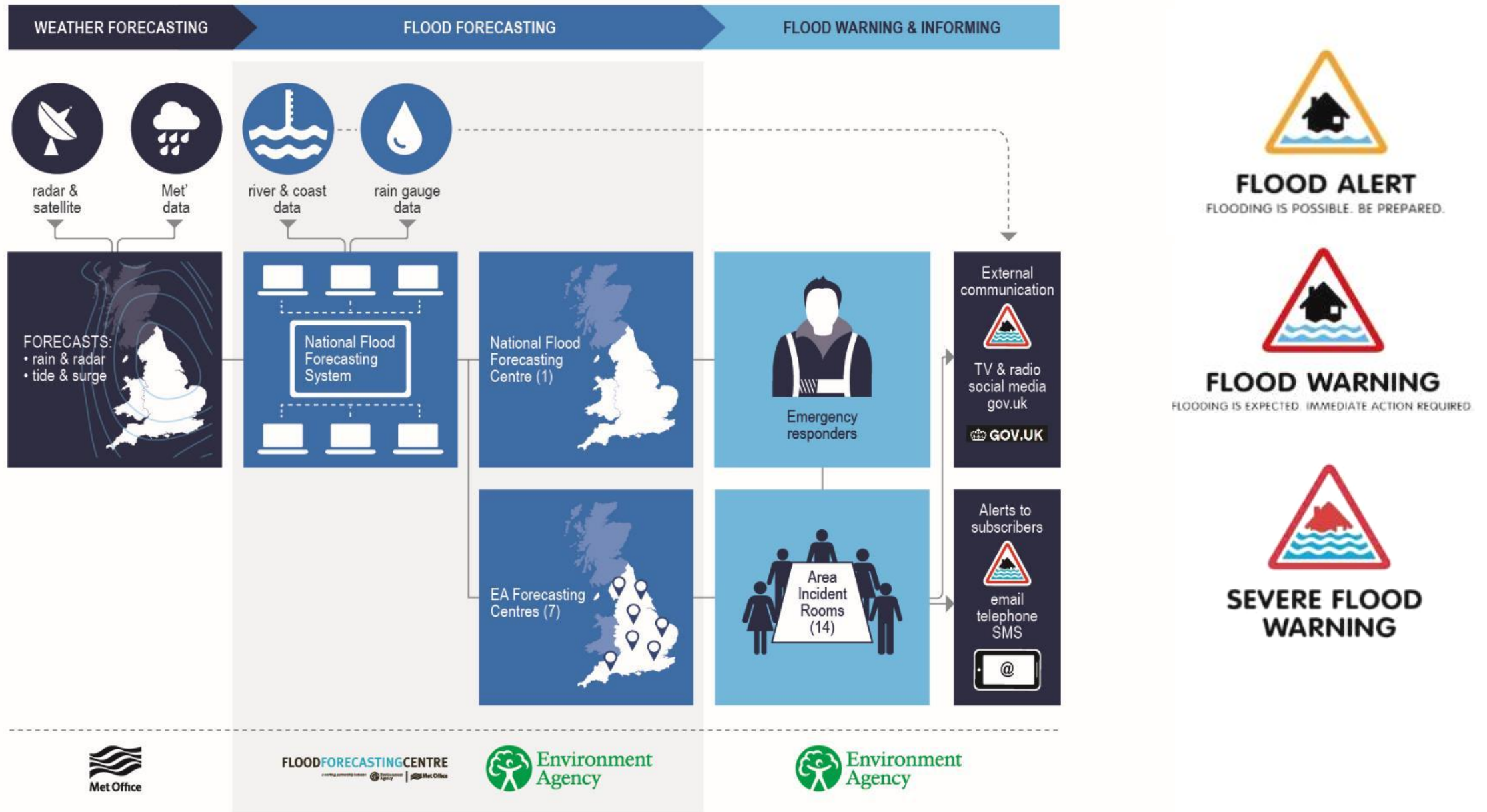
NEWS ▾ IN YOUR AREA ▾ WHAT'S ON ▾ MAN CITY MAN UTD SPORT ▾ CELEBS BUSINESS ▾ PROPERTY

The £850m redevelopment of Mayfield Depot 'will create thousands' of new jobs

Plans include the building of a new park, 1,300 homes, a 350 bed hotel and more than 807,000 sq ft of office space

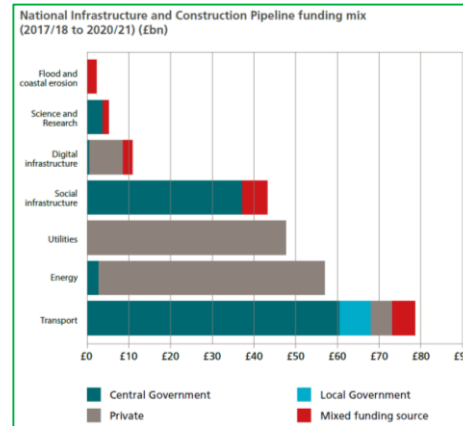


Forecast led, response driven



National FCERM strategy for England

“A nation ready for, and resilient to, flooding and coastal change – today, tomorrow and to the year 2100.”



FCERM Strategy 2100 ambitions



Climate resilient places

- Helping places plan and adapt to flooding and coastal change across a range of climate futures.



Today's growth and infrastructure resilient in tomorrow's climate

- Getting the right kind of development in the right places to deliver sustainable growth and infrastructure resilient to flooding and coastal change.



A nation of climate champions

- Better preparing society through education and accessible digital information as well as being a world leader in flood and coastal resilience.

