

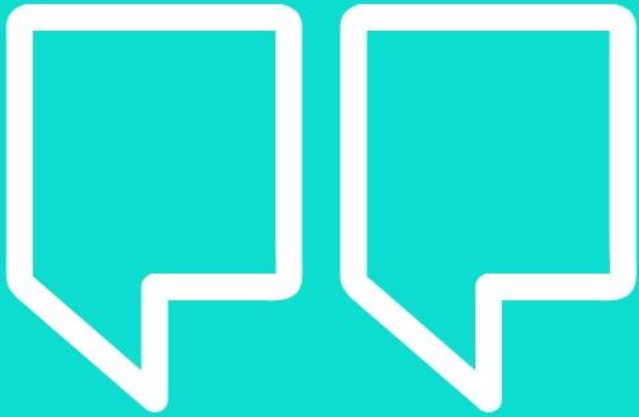
GM RESILIENCE UNIT

GMCA GREATER
MANCHESTER
COMBINED
AUTHORITY

GREATER MANCHESTER'S RESILIENCE CHALLENGE

For the CIWEM Conference, 30 April 2019

Presented by Dr Kathy Oldham OBE (GM Chief Resilience Officer)



WHAT IS RESILIENCE ?

Urban resilience is the capacity of individuals, communities, institutions, businesses, and systems within a city to survive, adapt, and grow no matter what kinds of chronic stresses and acute shocks they experience.

- 100 RESILIENT CITIES

WHY IS URBAN RESILIENCE IMPORTANT?

URBANISATION



Cities are growing, not least GM's regional centre which is seeing a rapid increase in population growth which is forecast to continue over the coming decades.

GLOBALISATION



Globalisation, fueled by fast-paced changes in technology and the increased mobility of goods, services, capital and labour, is greatly changing our economies, societies and the natural environment and has made our world more interconnected than ever before.

CLIMATE CHANGE



A changing climate is resulting in an increase in the likelihood of extreme weather events, as well as exacerbating a wide range of stresses GM faces.

RESILIENCE

EVOLUTION OF RESILIENCE

BUILDING ON EXPERIENCE

SENDAI
FRAMEWORK FOR
DISASTER RISK
REDUCTION

SUSTAINABLE
DEVELOPMENT
GOALS

MAKING CITIES
RESILIENT ROLE
MODEL CITY

PARIS CLIMATE
CHANGE AGREEMENT

GREATER MANCHESTER
RESILIENCE FORUM

GREATER MANCHESTER
STRATEGY

CIVIL CONTINGENCIES ACT 2004

GREATER MANCHESTER SPATIAL
FRAMEWORK

COMMUNITY RISK REGISTER

GREATER MANCHESTER
POPULATION HEALTH PLAN

S H O C K S

S T R E S S E S

KEY RESILIENCE BUILDING MILESTONES

1

2004 Civil Contingencies Act

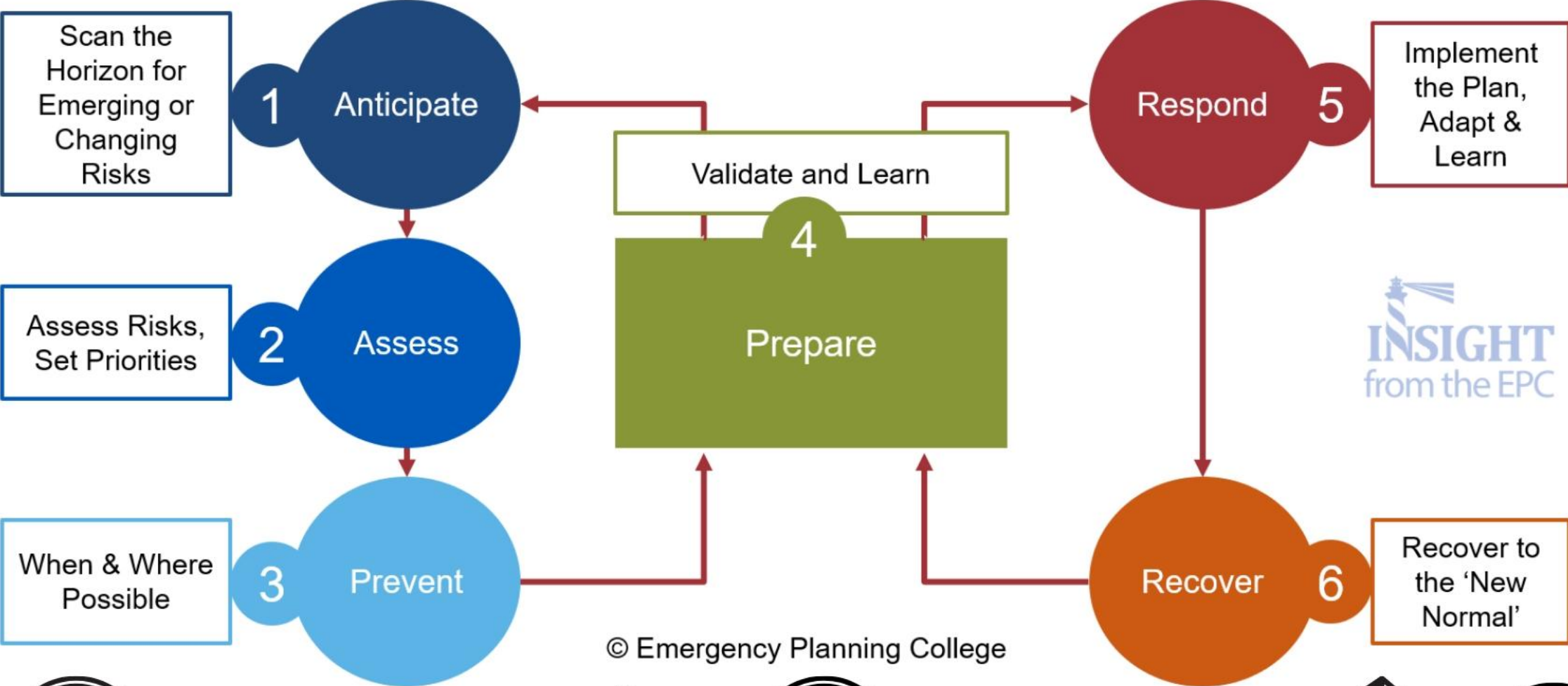
2

UNISDR Making Cities Resilient Campaign

3

GM Devolution / 100 Resilient Cities

INTEGRATED EMERGENCY MANAGEMENT



© Emergency Planning College



LOCAL GOVERNMENT LEADERSHIP ROLE



1

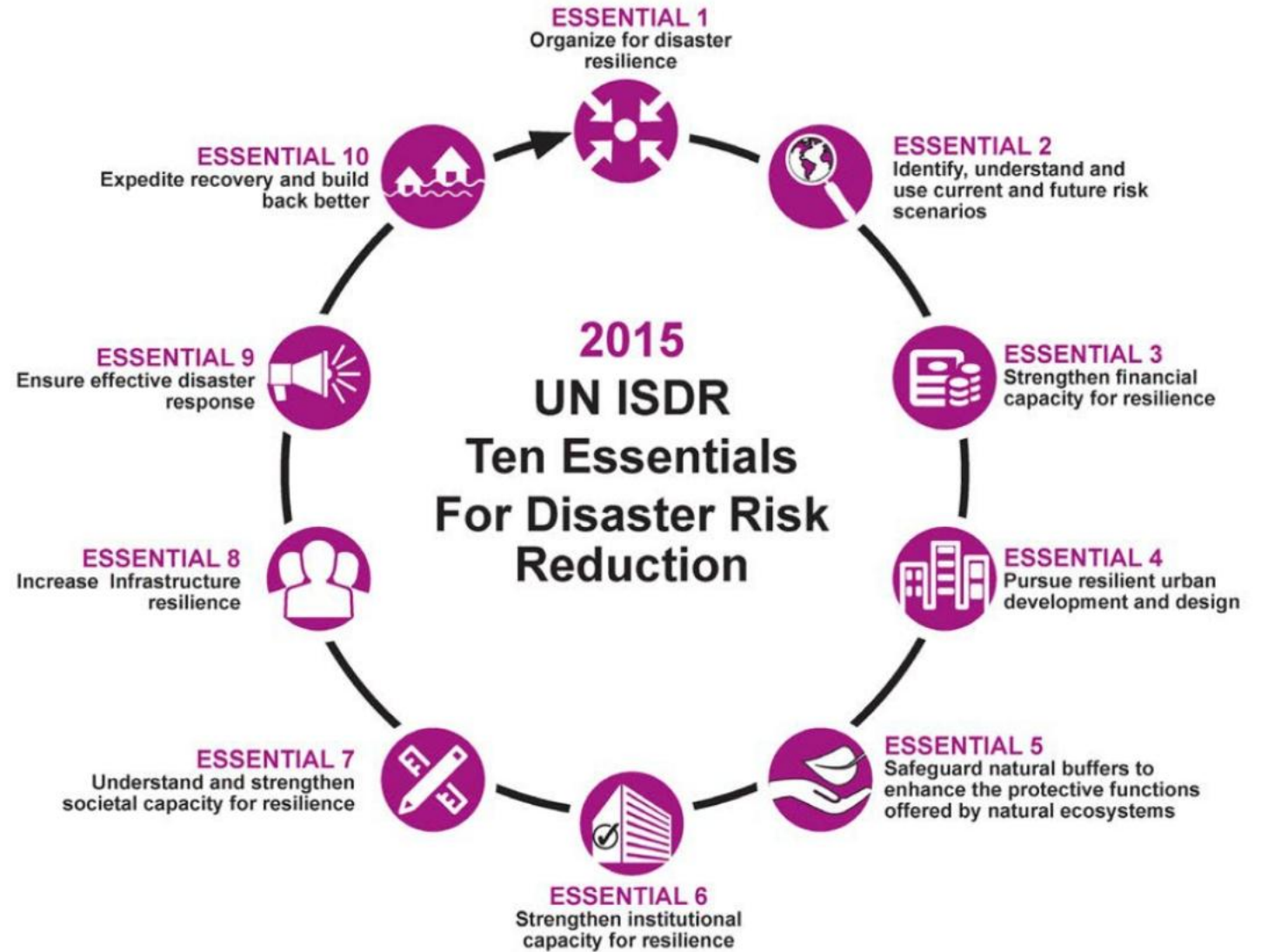


2



3

UNISDR TEN ESSENTIALS FOR DRR



RECOMMENDATIONS FROM INTERNATIONAL CITY-CITY PEER REVIEW ON ESSENTIAL 8 (INCREASE INFRASTRUCTURE RESILIENCE)

PRIVATE SECTOR

Develop ways of working with the private sector to secure new funds that help the city-region to invest in infrastructure, the environment and reducing the risk of future emergencies

INFORMATION SHARING

Improve the sharing of information between infrastructure providers & emergency responders to identify interdependencies and potential single points of failure

LEARNING

Continue to promote joint learning through emergency responders, utilities and other organisations holding exercises to rehearse the response to emergencies and to recovering from them

SOCIAL MEDIA

Explore greater use of social media to raise awareness amongst communities at risk about how to prepare for flooding

GREATER MANCHESTER: A RESILIENT CITY-REGION



1

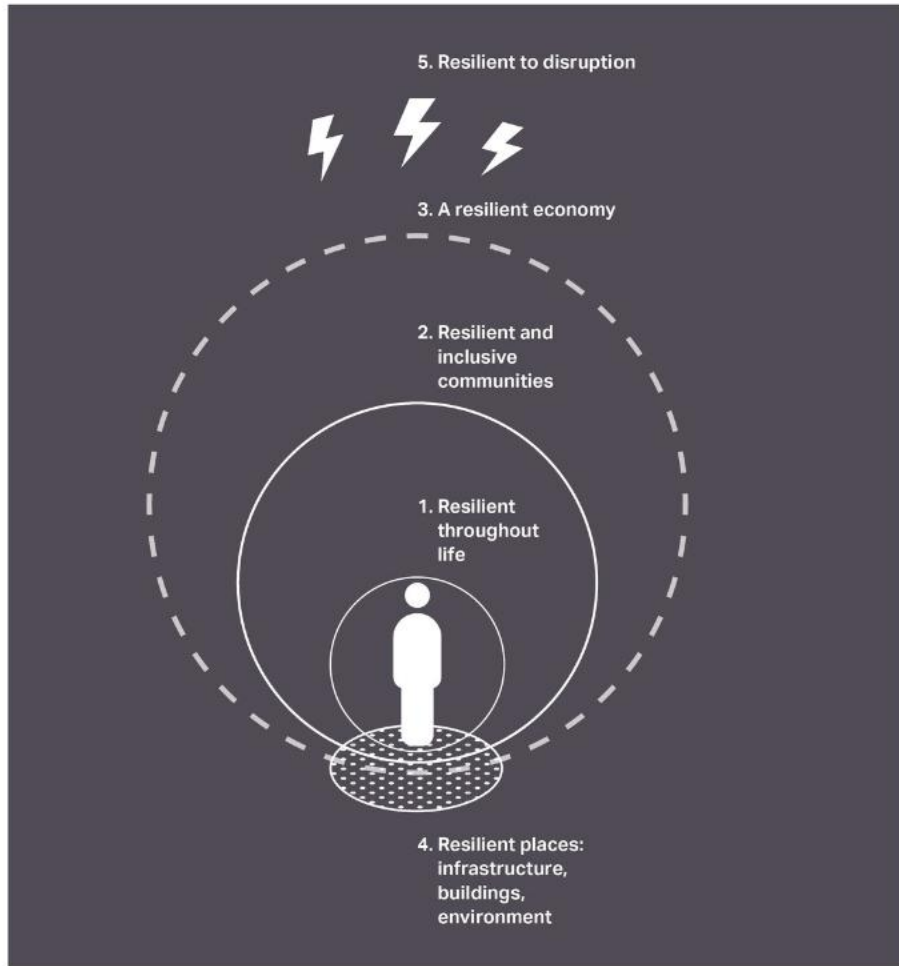


2



3

DEVELOPING A RESILIENCE STRATEGY



1



2



3

DEVELOPMENT OF A GM
BASELINE - PRELIMINARY
RESILIENCE ASSESSMENT

FURTHER RESEARCH - GM
DISCOVERY AREAS

STRATEGY DEVELOPMENT -
CUSTOMISED CITY APPROACH

STRATEGY DELIVERY -
ASSESSMENT OF ACTIONS

EXAMPLES OF RESILIENCE BUILDING ACTIVITY

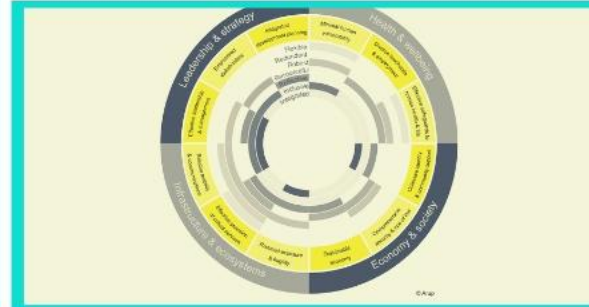
CONSULTATION & STAKEHOLDER ENGAGEMENT



INTERNATIONAL PEER CHALLENGE AND LEARNING



MEASUREMENT



RESEARCH



RISK ASSESSMENT, PLANNING & MITIGATION



INFORMING POLICY

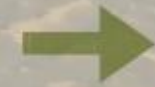


A SYSTEMS APPROACH TO RESILIENCE: MOORLANDS CASE STUDY

The textile industry of Greater Manchester created damaging atmospheric pollution



This pollution fell on the moorlands as acid rain and degraded the top layer



Increasing the risk of flooding



Increasing the risk of moorland fires



Releasing carbon into the atmosphere



Damaging wildlife and important ecosystems

Spoiling recreational and leisure facilities



PILLAR 1 - COMMUNITIES
BUILDING COHESIVE,
HEALTHY AND RESILIENT
COMMUNITIES

- 1: A more resilient and equal society
- 2: Enabling community resilience to deal with emergencies
- 3: Dealing with hateful extremism through social cohesion
- 4: Promoting resilient behaviours

PILLAR 2 - LEADERSHIP
SHAPING RESILIENCE
WITHIN GREATER
MANCHESTER

- 1: Encouraging innovation to realise our resilience ambitions
- 2: Uniting partners to develop integrated approaches to resilience
- 3: Establishing conditions for resilience
- 4: Implementing resilience across the City Region

PILLAR 3 - FOUNDATIONS
BEING READY FOR FUTURE
CHALLENGES

- 1: Using a resilience lens to enhance our economy
- 2: Leveraging funding to make us more resilient
- 3: Planning for resilient urban growth
- 4: Effectively responding to and recovering from emergencies

PILLAR 4: DISCOVERY
ADVANCING RESILIENCE
UNDERSTANDING

- 1: Learning through reflecting on experience
- 2: Exchanging ideas with other cities
- 3: Exploring emerging risks
- 4: Drawing on scientific and technical knowledge

Our Vision:
"Creating one of the
most resilient
places in a
changing and
complex world in
which to grow up,
get on and grow old
together"

Draft Greater Manchester
Resilience Strategy

NEXT STEPS



AGMA CIVIL CONTINGENCIES AND RESILIENCE UNIT

WILL CONTINUE TO OFFER EMERGENCY PLANNING SUPPORT TO THE GM LOCAL AUTHORITIES



EXERCISES, PLANNING AND PREPARATION

PREPARATORY WORK WILL CONTINUE, INCLUDING EXERCISING, PLANNING AND PUTTING IN PLACE PROPORTIONATE RESPONSE SYSTEMS



GM RESILIENCE STRATEGY

WILL BE DEVELOPED, ENSURING LESSONS FROM RECENT EVENTS INCLUDING THE MANCHESTER ARENA ATTACK AND THE MOORLAND FIRES ARE TAKEN FORWARD APPROPRIATELY