



**Canal &
River Trust**

Making life better by water

Water Resources: are we fit for 2050?

The view from - navigation

Adam Comerford
National Hydrology Manager

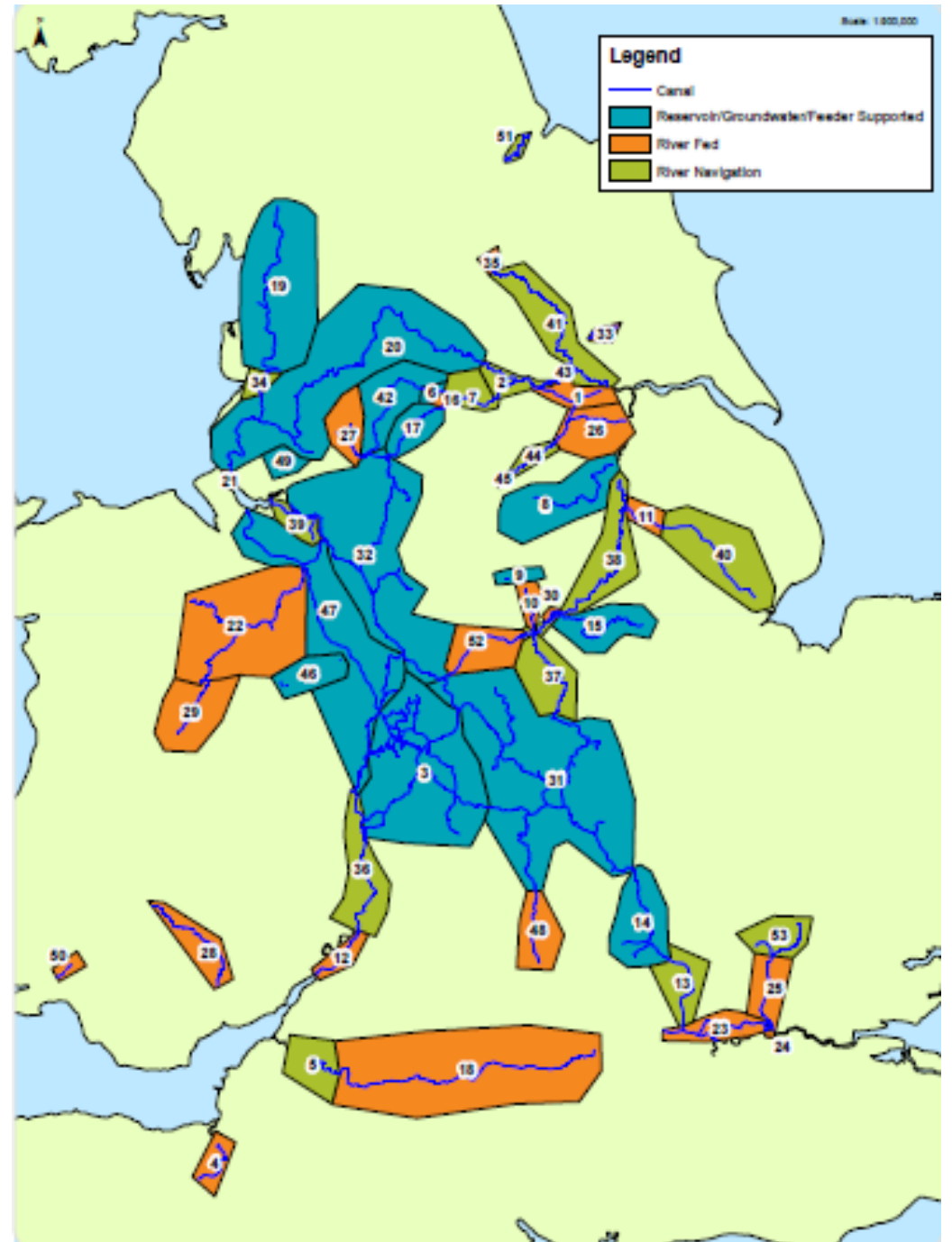
Adam.Comerford@canalrivertrust.org.uk

5 December 2018

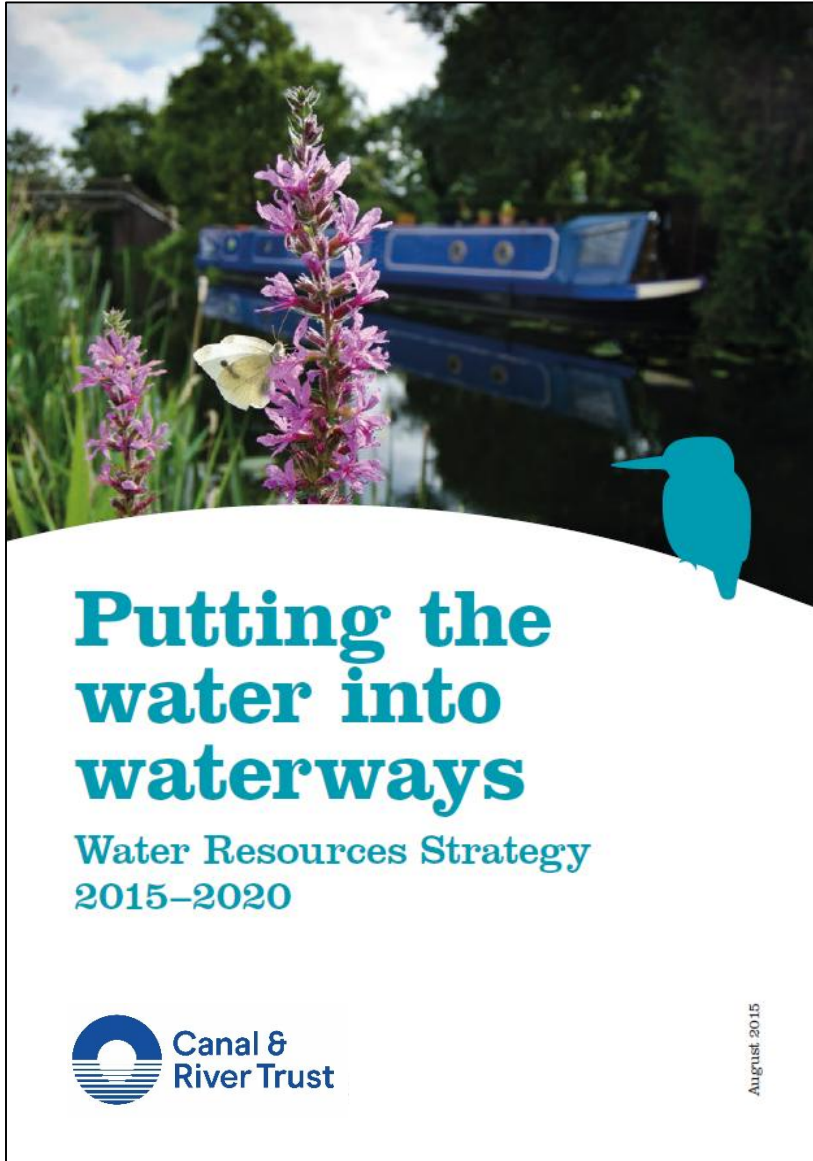


Managing water

- Supply
 - Reservoirs
 - Surface water
 - Ground water
 - Other inputs
- Demand
 - Lockage
 - Losses
 - Abstraction



Our strategic approach



- Level of service for the network
- Assess & respond to future pressures
- Key concepts & definitions
- Demonstrate our values 
- Show we are strategy-led
- Secure support for our approach
- Plan for investment to 2050

Future pressures

- Increased boating
- Reduced funding
- Regulatory impacts
- Water transfers & water sales
- Expanding the network
- Climate change incl. drought



AS UK SIZZLES IN RECORD 99°F..



Regulatory impacts

- Water Act 2003 implementation
- Transition to Environmental Permitting Regs
- EA Strategic Review of Charges
- Defra Abstraction Plan
- Restoring Sustainable Abstraction
- WFD & RBMP process
- Catchment Based Approach (CaBA)

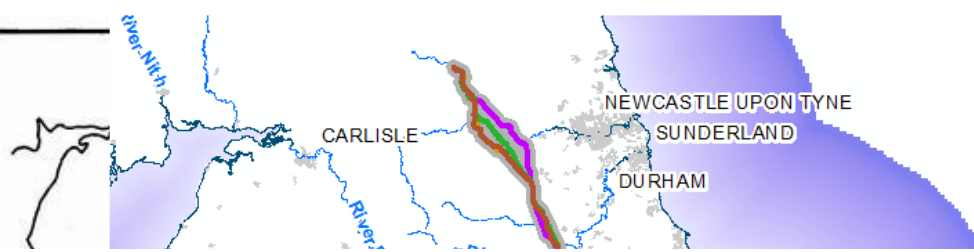


Water Act 2003

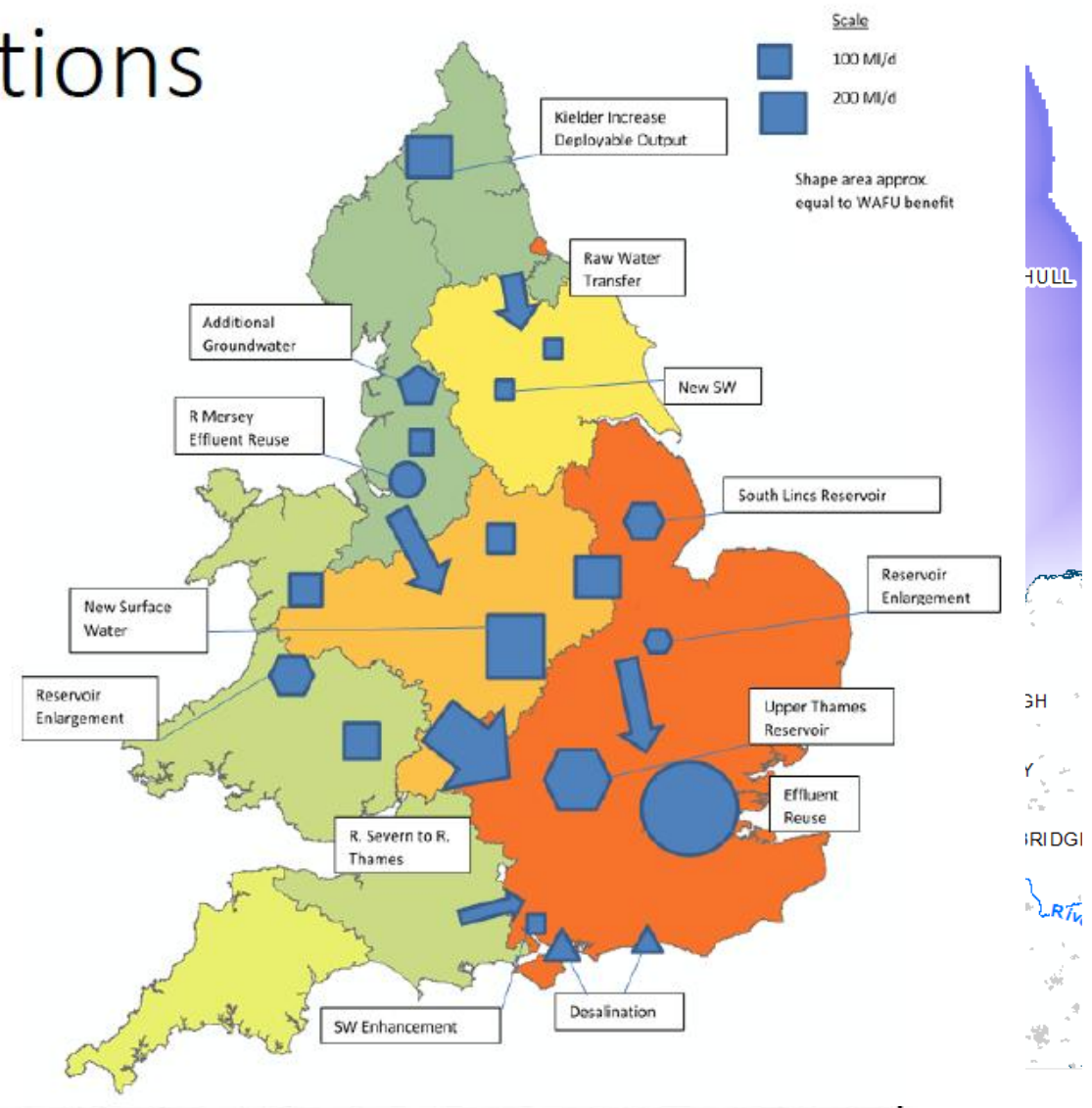
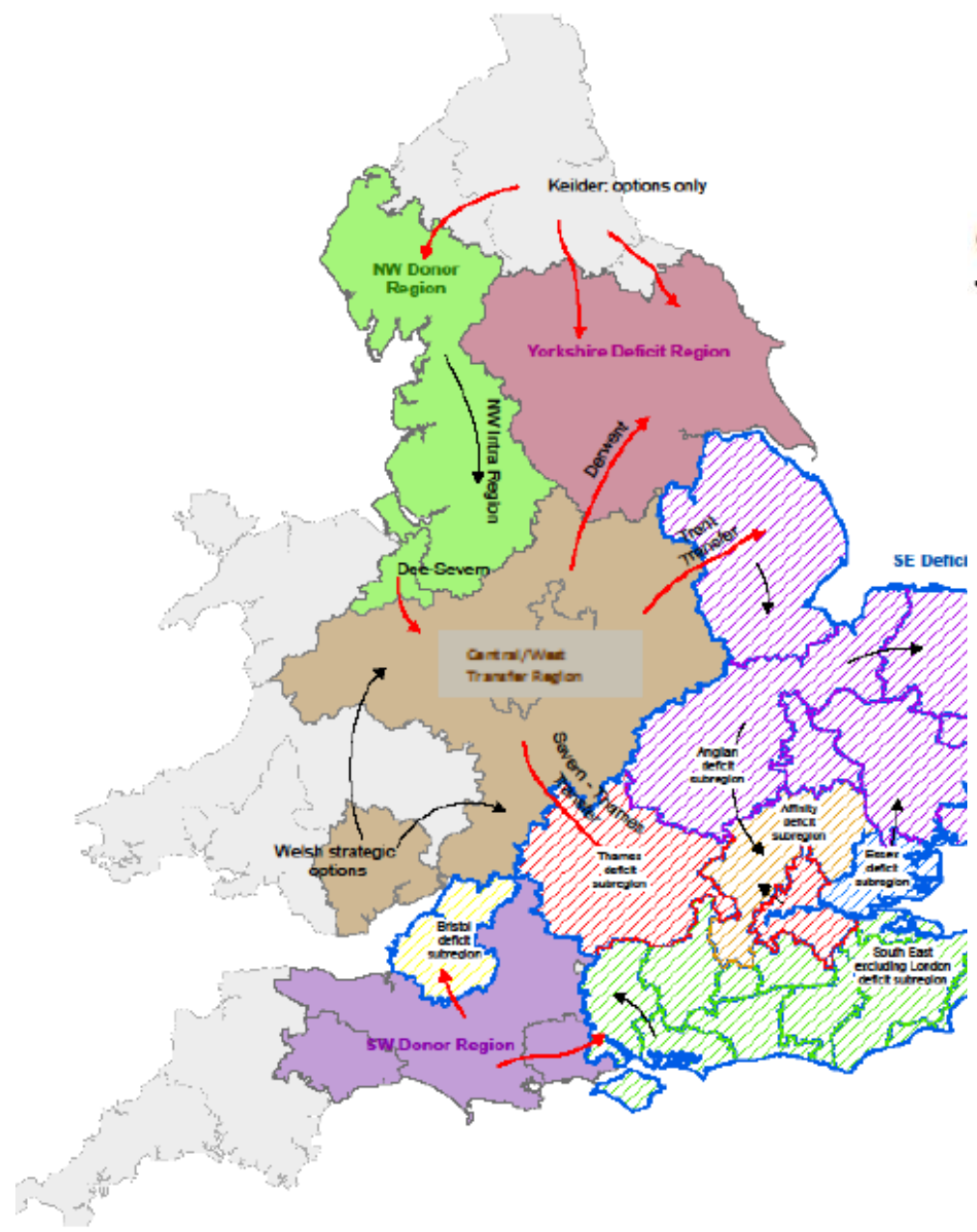


Water transfers – existing examples

- Llangollen Canal
 - Up to 83 MI/d, all year round
 - 77 km length, 21 locks
 - Public water supply to United Utilities, via Hurleston Reservoir (25-40 MI/d)
- Bridgwater & Taunton Canal
 - Up to 40 MI/d, all year round
 - Approx. 20 km length, 5 locks
 - Public water supply to Wessex Water, via Durleigh Reservoir (max. 18 MI/d)
- Gloucester & Sharpness Canal
 - Up to 245 MI/d, all year round
 - Approx. 26km length, no locks (but pumped in from R.Severn)
 - Public water supply to Bristol Water

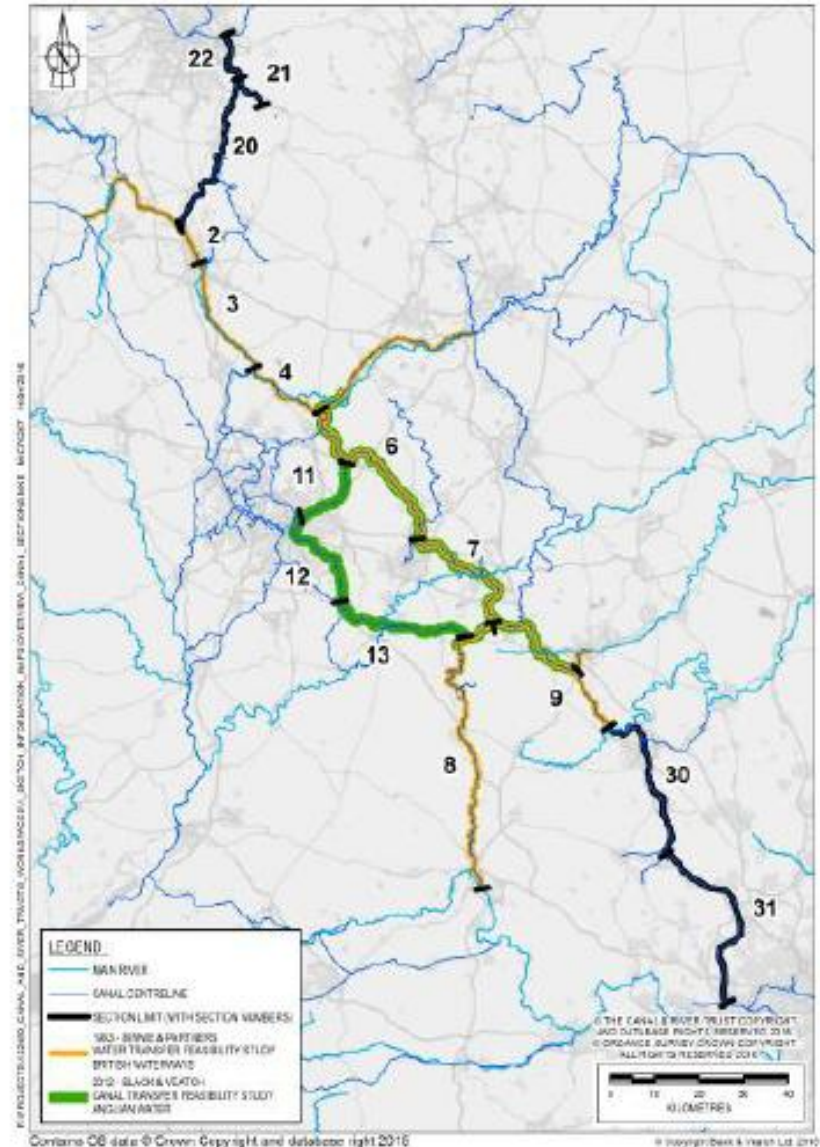


Solutions



Engaging & collaborating with water industry

- WRMP'19 early engagement
- 20 schemes, 6 companies
- 235 MI/d additional transfers
- Awaiting outcome of process
- Challenging constructively
- WR National Framework
- Barriers to collaboration
 - Water availability
 - Transfer of INNS
 - Water quality issues



So - are we fit for 2050...?

- 200+ year old infrastructure
- Set out our Strategy to 2050
- Regulatory challenges upon us now
- Opportunities to collaborate and improve water resources resilience

