

IN-PERSON EVENTS | Involving. Informing. Inspiring

CIWEM Urban Drainage Group Annual Conference 2022

Collaboratively developing a 25 year blue
green plan: lessons learnt from Hull

Share [#CIWEMUDGAnnualConf22](#)



@CIWEM @CIWEMUDG



@CIWEM @CIWEMUDG @LivingWithH2O @Stantec

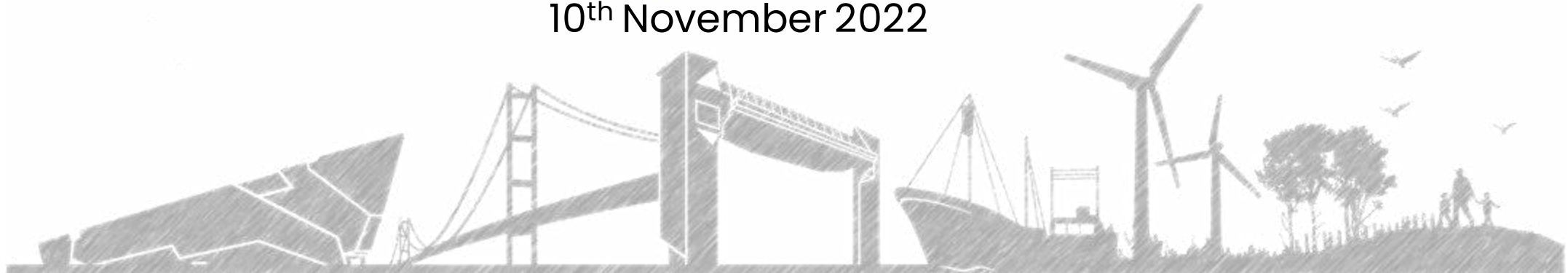


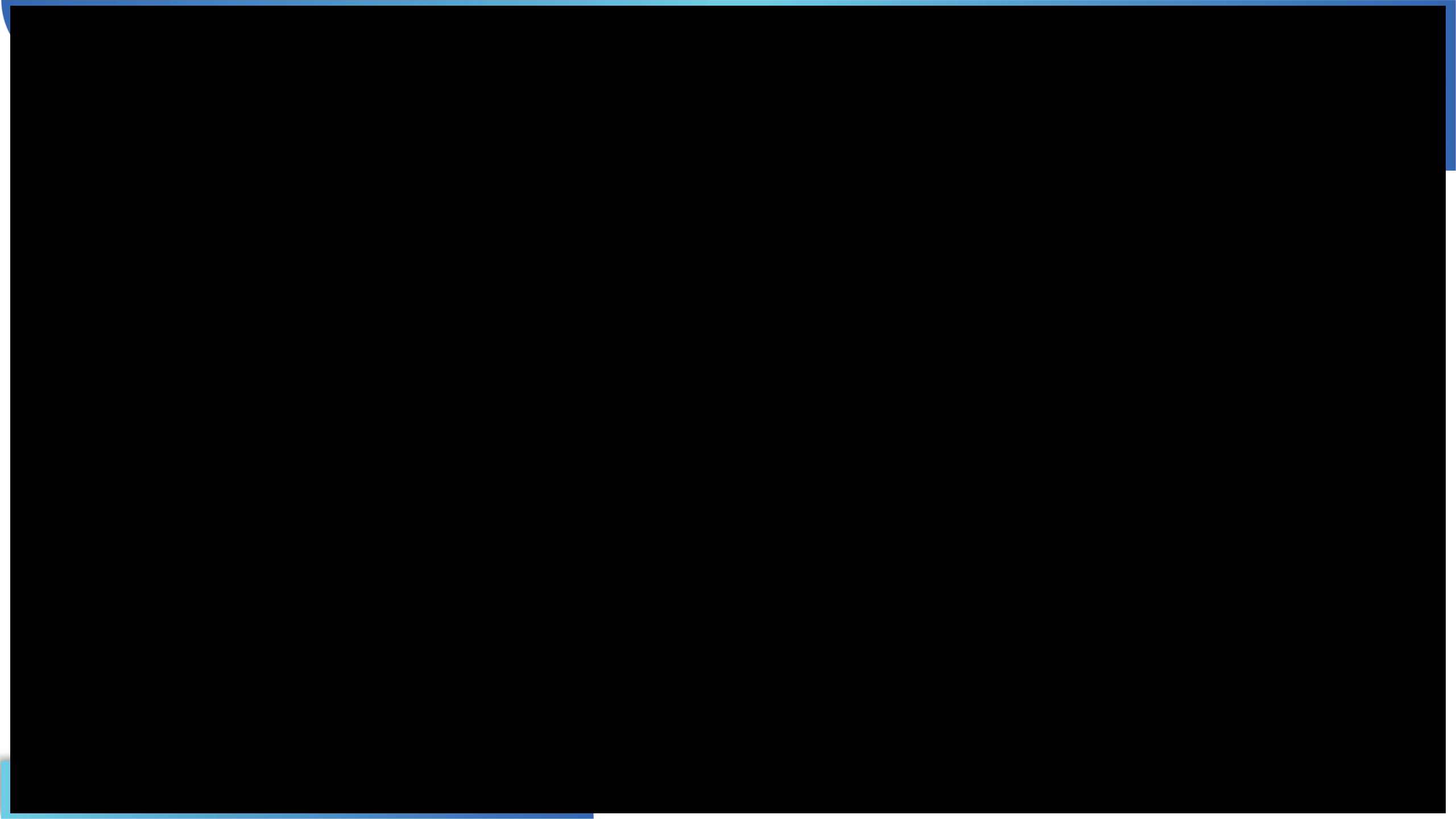
LIVING with WATER

Collaboratively developing a 25 year blue green plan: lessons learnt from Hull

CIWEM Chartered Institution of
Water and Environmental
Management

10th November 2022





Project Highlights:

- Together we have created a 25 year blue green plan to create flood resilience and to reshape how we manage surface water in Hull
- Changes to the landscape will be done through blue green interventions connected to a layered strategy
- This has been created by looking within and outside the water sector through a strong partnership model

We will share:

- 5 Lessons Learnt that are applicable to other locations

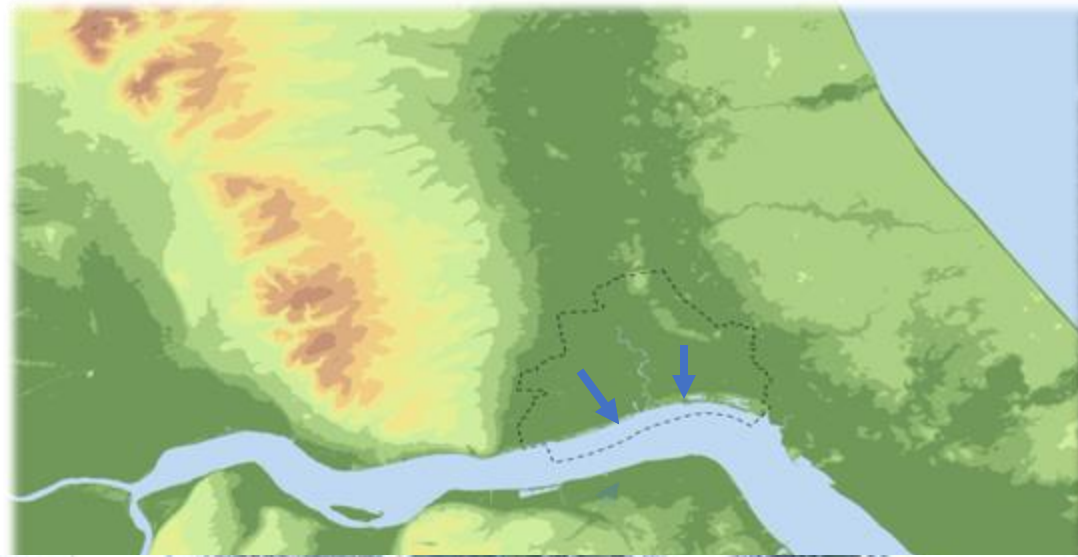


Lee Pitcher
LWW General
Manager



Gwen Rhodes
Stantec Project
Technical Lead

Challenge of creating flood resilience: – where does the water go



1. Work in Partnership



SETTING DYKE West Hull

1.25km
Stretch



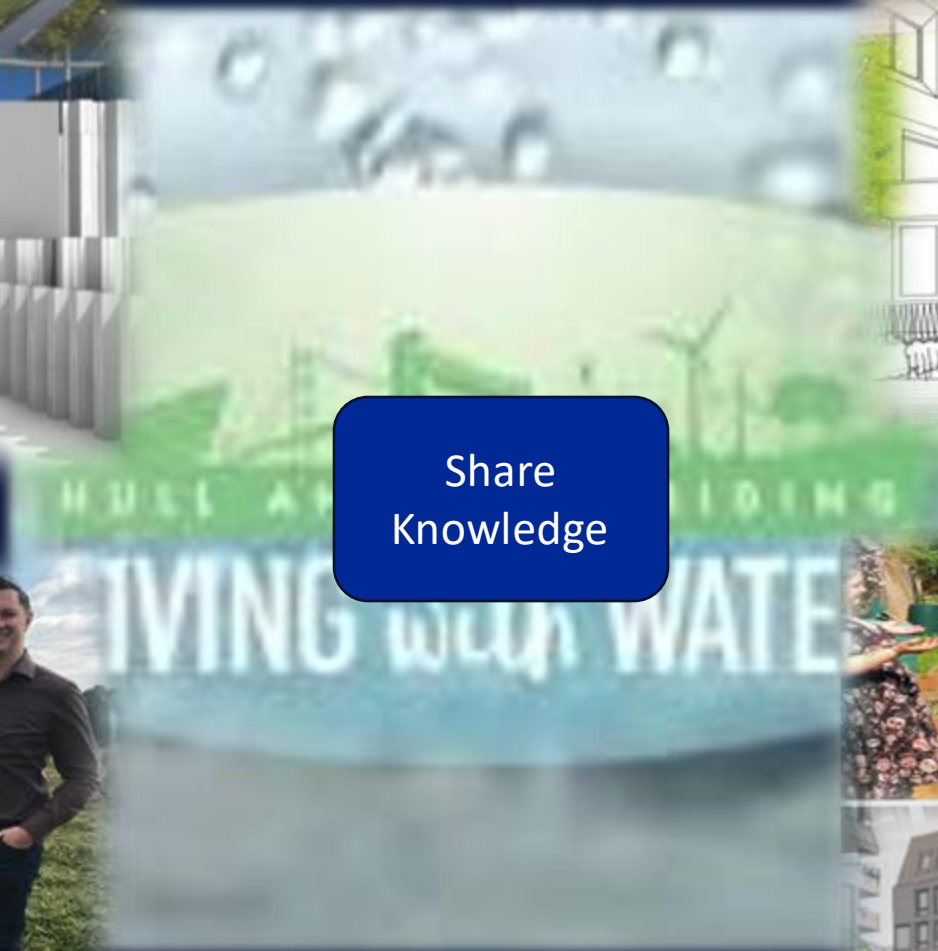
Reduce Flood
Risk



Build
Community
Resilience



Share
Knowledge



Enhance
Economy



Improve Place



2. Have a vision of the future

OUR VISION

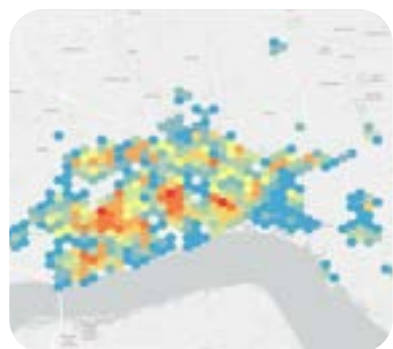
Our vision is to live with and embrace water in a green and climate adaptive place.

- Through effective place making in urban and rural locations, we will enable sustainable and healthy lifestyles, and provide attractive places to live and work.
- We will embed managed change through our public and private partnerships that align our needs and delivery plans.
- Ultimately, we will improve flood resilience by safely managing, storing, moving and reusing water to benefit our communities, the environment and society.

OUR PILLARS



3. Create collaboratively



Understand the current position from a policy and performance perspective

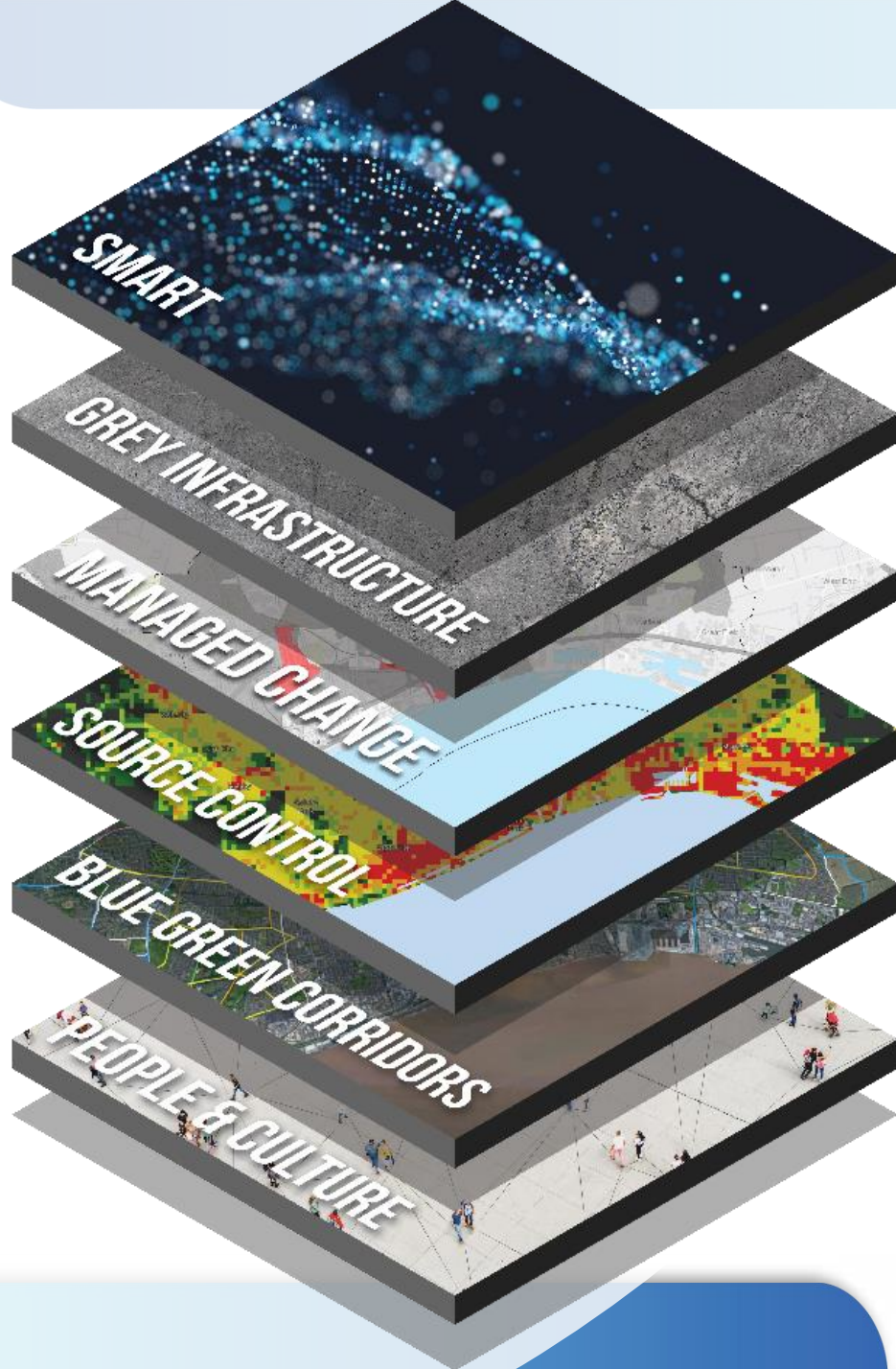
Charette 1 – ideas to form strategies.

Shape and test the strategies to validate the art of the possible. Shape an adaptive approach. Improve the flood resilience

Charette 2 – feedback and enhance, focusing on more detail

Develop and shape the plan

Wider stakeholder session to share and discuss



A layered spatially connected strategy can be adapted over time

4. Be bold



Move water through the city

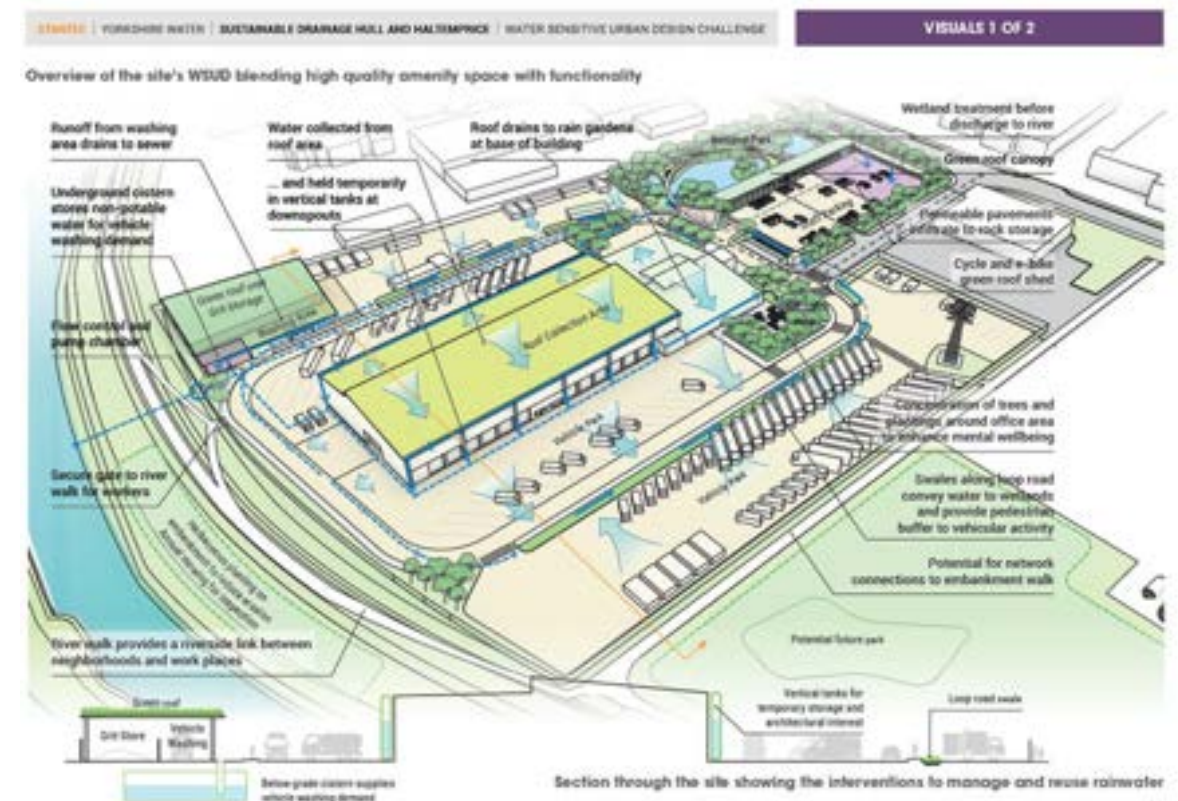


Slow the flow everywhere

5. Be adaptive



Plan, but be able to change



Seize opportunities

The Blue-Green Plan in 30 seconds



14,000 fewer
properties
flood in 2080



£2.6bn
potential
benefits

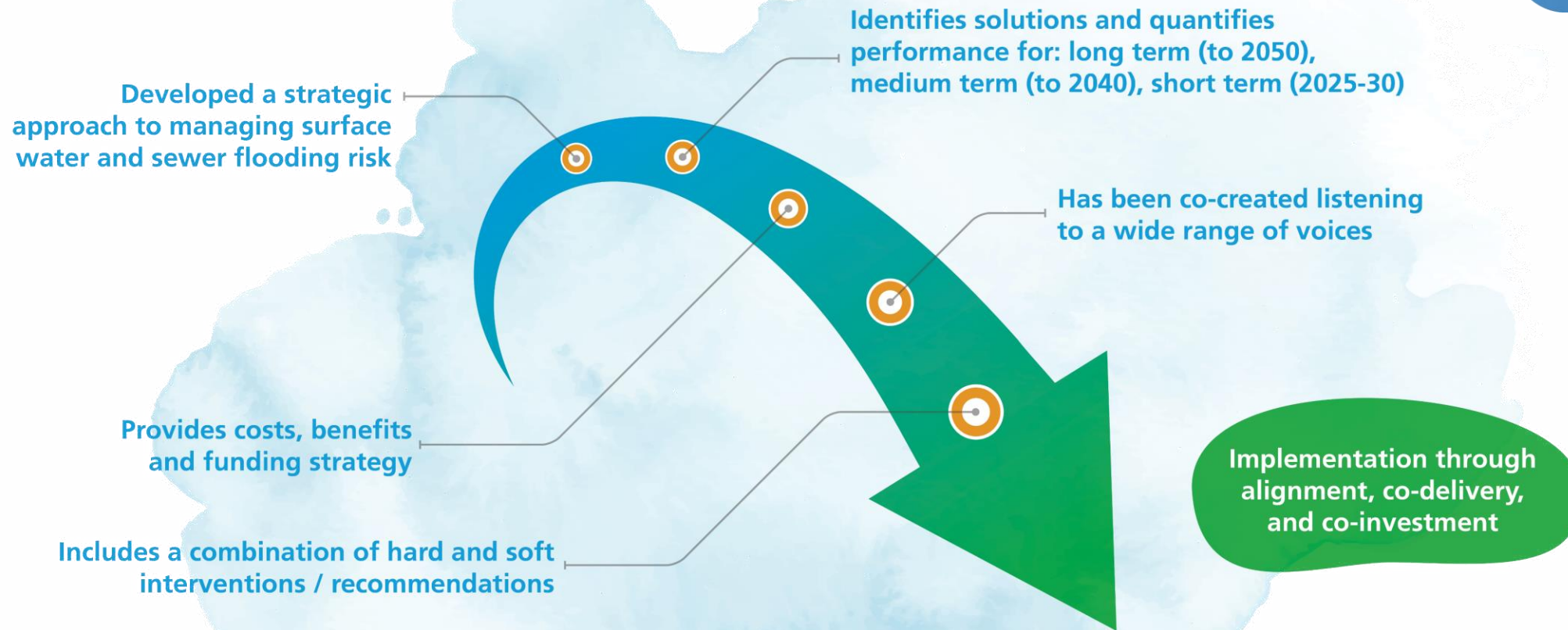


£1.3bn
potential
investment



Carbon
neutral

The Blue Green Plan:



ACHIEVE OUR VISION

to live with and embrace water in a green and climate adaptive place

Next Steps for us



- Successful delivery of AMP7 schemes
- Inclusion of BG Plan and Short Term Measures in PR24 submission



- Alignment of BG Plan with other council plans
- Pilot of source control on council buildings / homes



- Inclusion of BG Plan in Medium Term Plan
- Challenge of funding mechanisms for enabling elements



- Alignment of BG Plan with other council plans
- Pilot of source control on council buildings / homes



- Monitoring and data analysis
- Exemplar site for surface water management



- Adopt vision
- Progress Communication & Engagement Plan
- Appoint Funding Manager
- Shape and develop the COAPF

Next Steps for you



1. Work in partnership
2. Have a vision of the future
3. Create Collaboratively
4. Be Bold
5. Be Adaptive

IN-PERSON EVENTS | Involving. Informing. Inspiring

Questions?

#CIWEMUDGAnnualConf22



CIWEM Urban Drainage Group ANNUAL CONFERENCE 2022

KINDLY SPONSORED BY:

